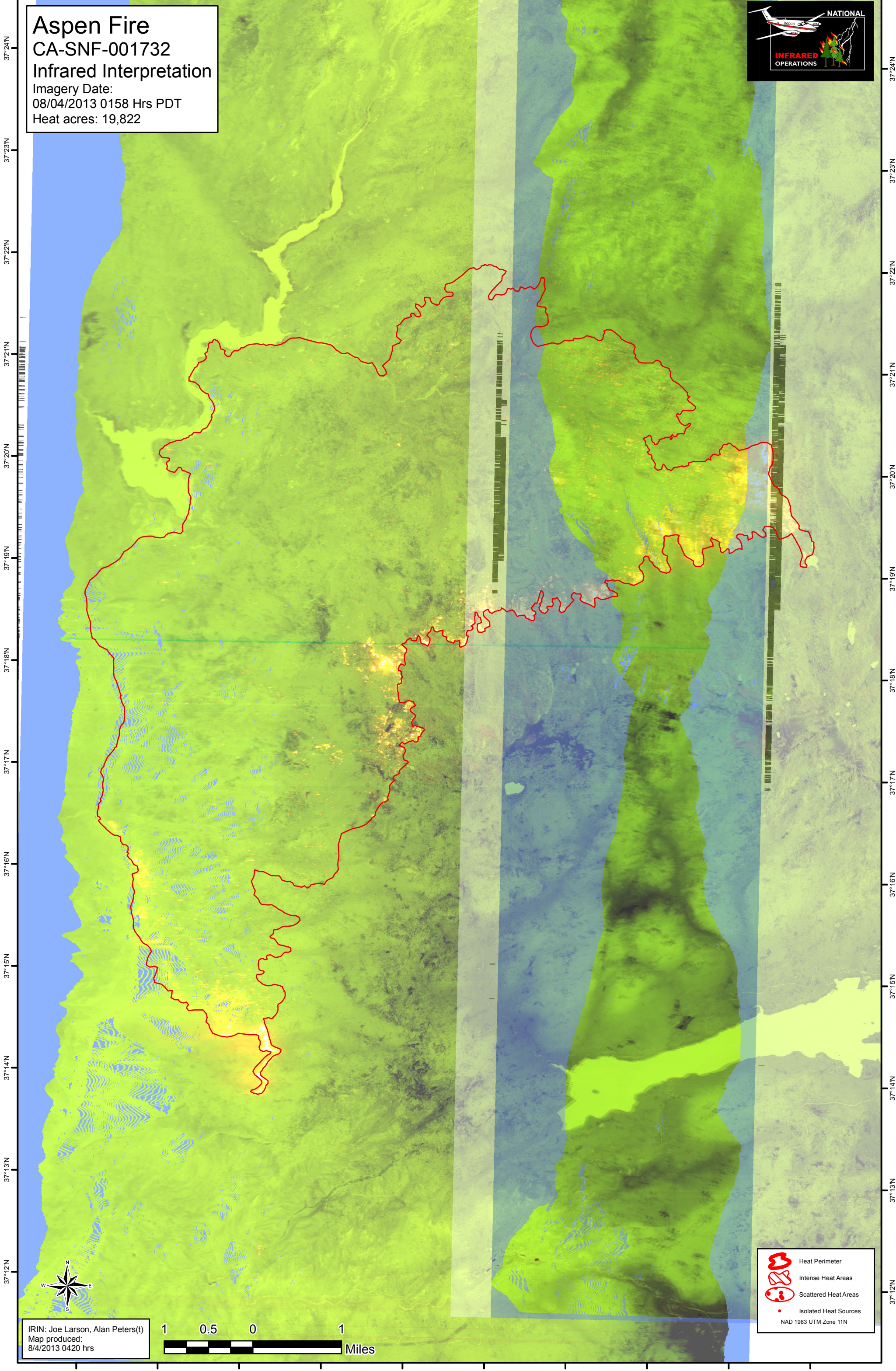






119°21'W 119°20'W 119°19'W 119°18'W 119°17'W 119°16'W 119°15'W 119°14'W 119°13'W 119°12'W 119°11'W

Aspen Fire
CA-SNF-001732
Infrared Interpretation
Imagery Date:
08/04/2013 0158 Hrs PDT
Heat acres: 19,822



IRIN: Joe Larson, Alan Peters(t)
Map produced:
8/4/2013 0420 hrs



-  Heat Perimeter
-  Intense Heat Areas
-  Scattered Heat Areas
-  Isolated Heat Sources

NAD 1983 UTM Zone 11N

119°20'W 119°19'W 119°18'W 119°17'W 119°16'W 119°15'W 119°14'W 119°13'W 119°12'W 119°11'W

37°24'N
37°23'N
37°22'N
37°21'N
37°20'N
37°19'N
37°18'N
37°17'N
37°16'N
37°15'N
37°14'N
37°13'N
37°12'N

37°24'N
37°23'N
37°22'N
37°21'N
37°20'N
37°19'N
37°18'N
37°17'N
37°16'N
37°15'N
37°14'N
37°13'N
37°12'N