

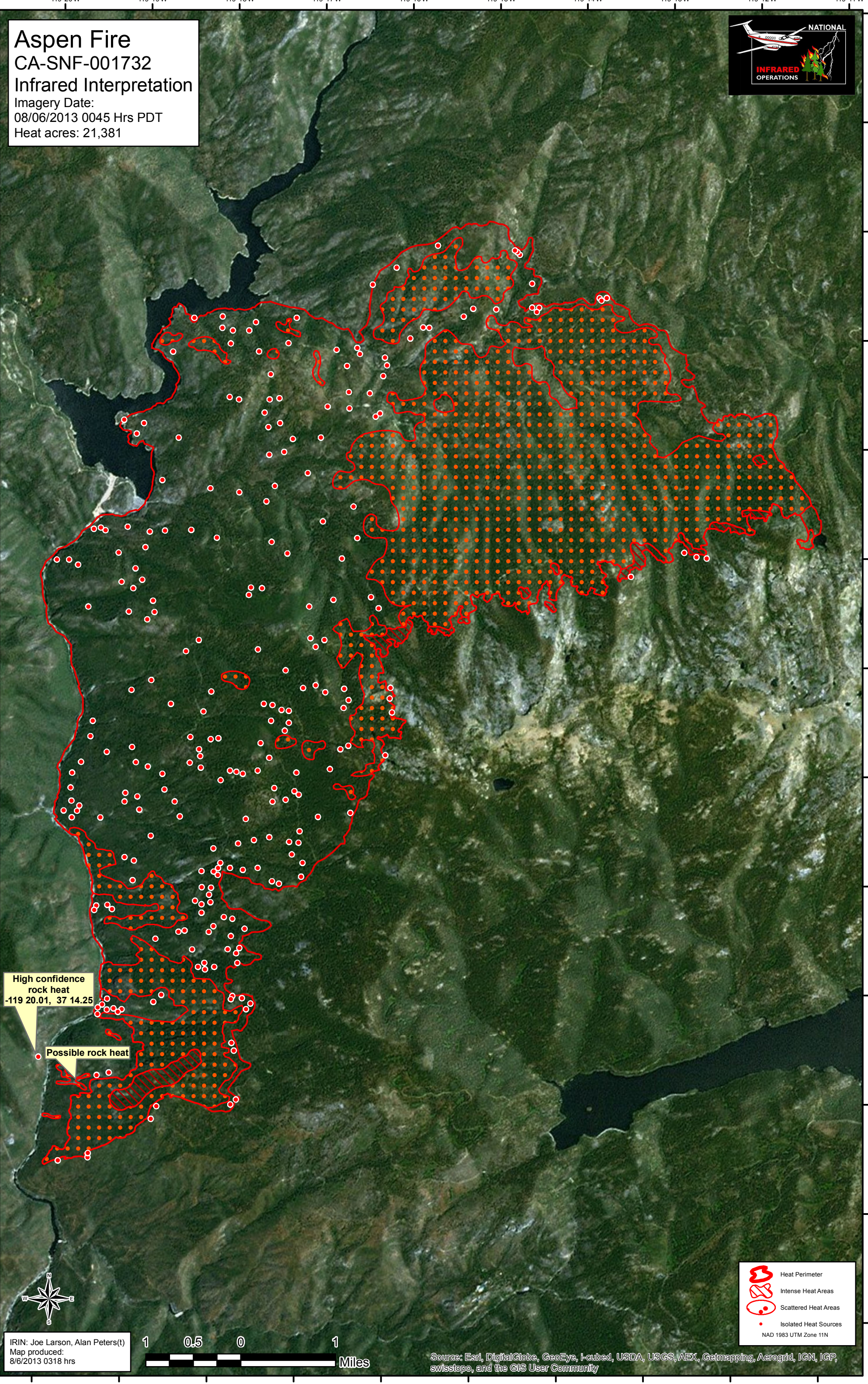
119°20'W 119°19'W 119°18'W 119°17'W 119°16'W 119°15'W 119°14'W 119°13'W 119°12'W 119°11'W

Aspen Fire
CA-SNF-001732
Infrared Interpretation
Imagery Date:
08/06/2013 0045 Hrs PDT
Heat acres: 21,381



37°23'N
37°22'N
37°21'N
37°20'N
37°19'N
37°18'N
37°17'N
37°16'N
37°15'N
37°14'N
37°13'N
37°12'N

37°24'N
37°23'N
37°22'N
37°21'N
37°20'N
37°19'N
37°18'N
37°17'N
37°16'N
37°15'N
37°14'N
37°13'N
37°12'N



**High confidence
rock heat**
-119 20.01, 37 14.25

Possible rock heat



IRIN: Joe Larson, Alan Peters(t)
Map produced:
8/6/2013 0318 hrs



Source: Esri, DigitalGlobe, GeoEye, I-cubed, USDA, USGS, AEX, Getmapping, Aerogrid, IGN, IGP, swisstopo, and the GIS User Community

- Heat Perimeter
 - Intense Heat Areas
 - Scattered Heat Areas
 - Isolated Heat Sources
- NAD 1983 UTM Zone 11N

119°20'W 119°19'W 119°18'W 119°17'W 119°16'W 119°15'W 119°14'W 119°13'W 119°12'W 119°11'W