

119°20'0"W

119°18'0"W

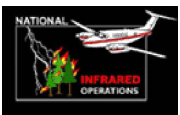
119°16'0"W

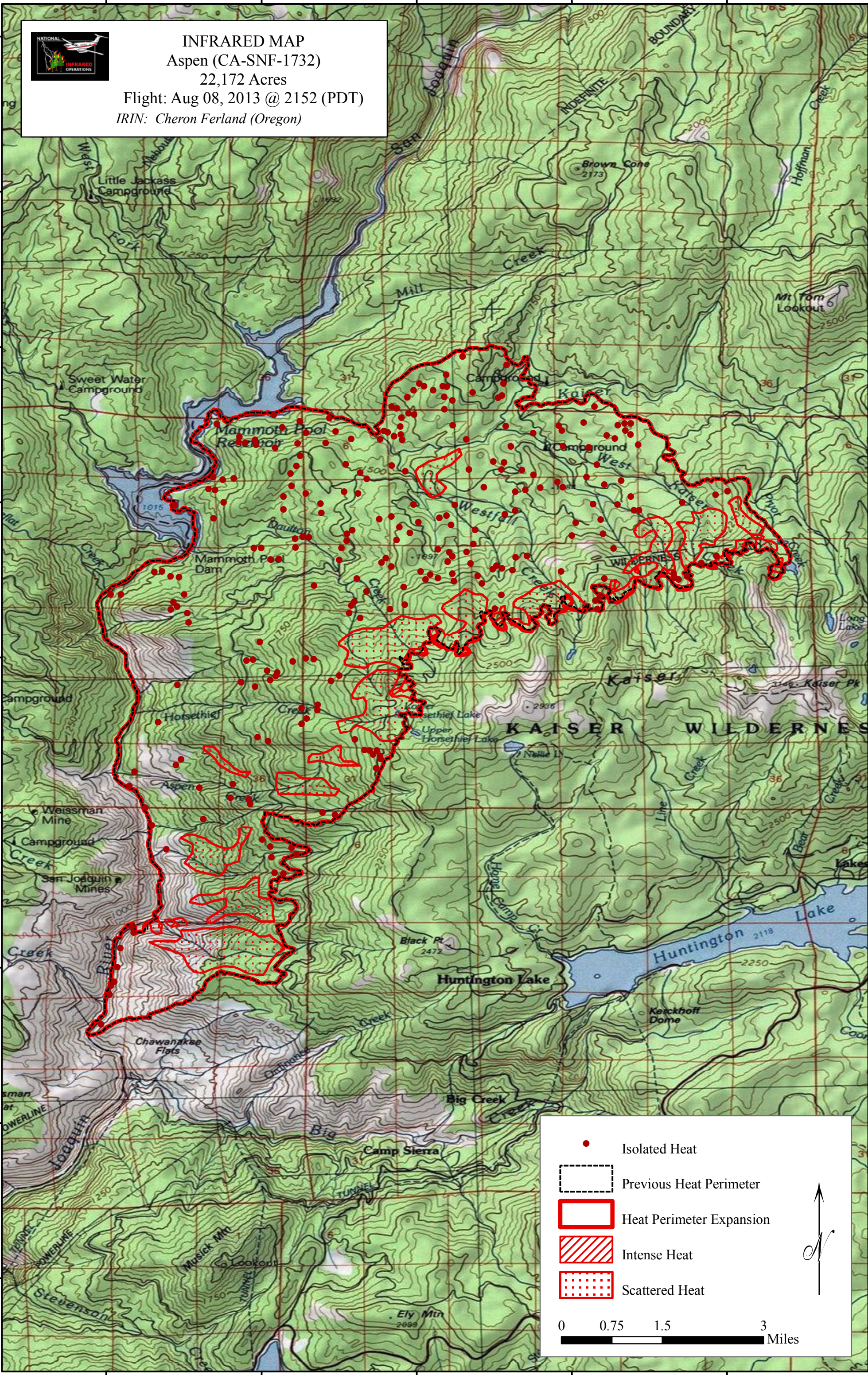
119°14'0"W

119°12'0"W

37°26'0"N  
37°24'0"N  
37°22'0"N  
37°20'0"N  
37°18'0"N  
37°16'0"N  
37°14'0"N  
37°12'0"N  
37°10'0"N


37°26'0"N  
37°24'0"N  
37°22'0"N  
37°20'0"N  
37°18'0"N  
37°16'0"N  
37°14'0"N  
37°12'0"N  
37°10'0"N

 **INFRARED MAP**  
 Aspen (CA-SNF-1732)  
 22,172 Acres  
 Flight: Aug 08, 2013 @ 2152 (PDT)  
 IRIN: Cheron Ferland (Oregon)



- Isolated Heat
- Previous Heat Perimeter
- Heat Perimeter Expansion
- Intense Heat
- Scattered Heat

0 0.75 1.5 3 Miles



119°20'0"W

119°18'0"W

119°16'0"W

119°14'0"W

119°12'0"W