
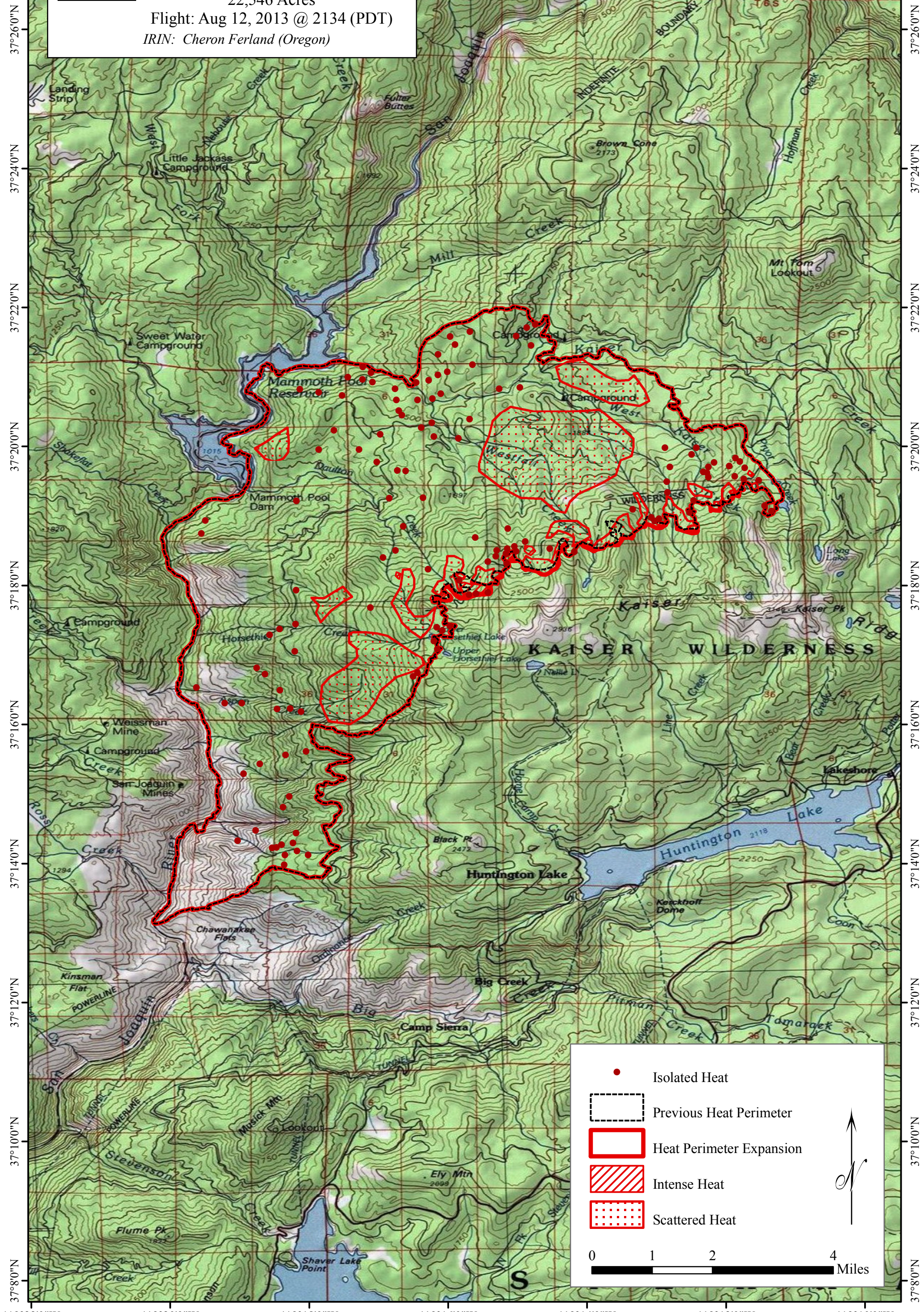








119°22'0"W 119°20'0"W 119°18'0"W 119°16'0"W 119°14'0"W 119°12'0"W 119°10'0"W

 **INFRARED MAP**  
 Aspen (CA-SNF-1732)  
 22,546 Acres  
 Flight: Aug 12, 2013 @ 2134 (PDT)  
 IRIN: Cheron Ferland (Oregon)



-  Isolated Heat
-  Previous Heat Perimeter
-  Heat Perimeter Expansion
-  Intense Heat
-  Scattered Heat

0 1 2 4 Miles



119°22'0"W 119°20'0"W 119°18'0"W 119°16'0"W 119°14'0"W 119°12'0"W 119°10'0"W