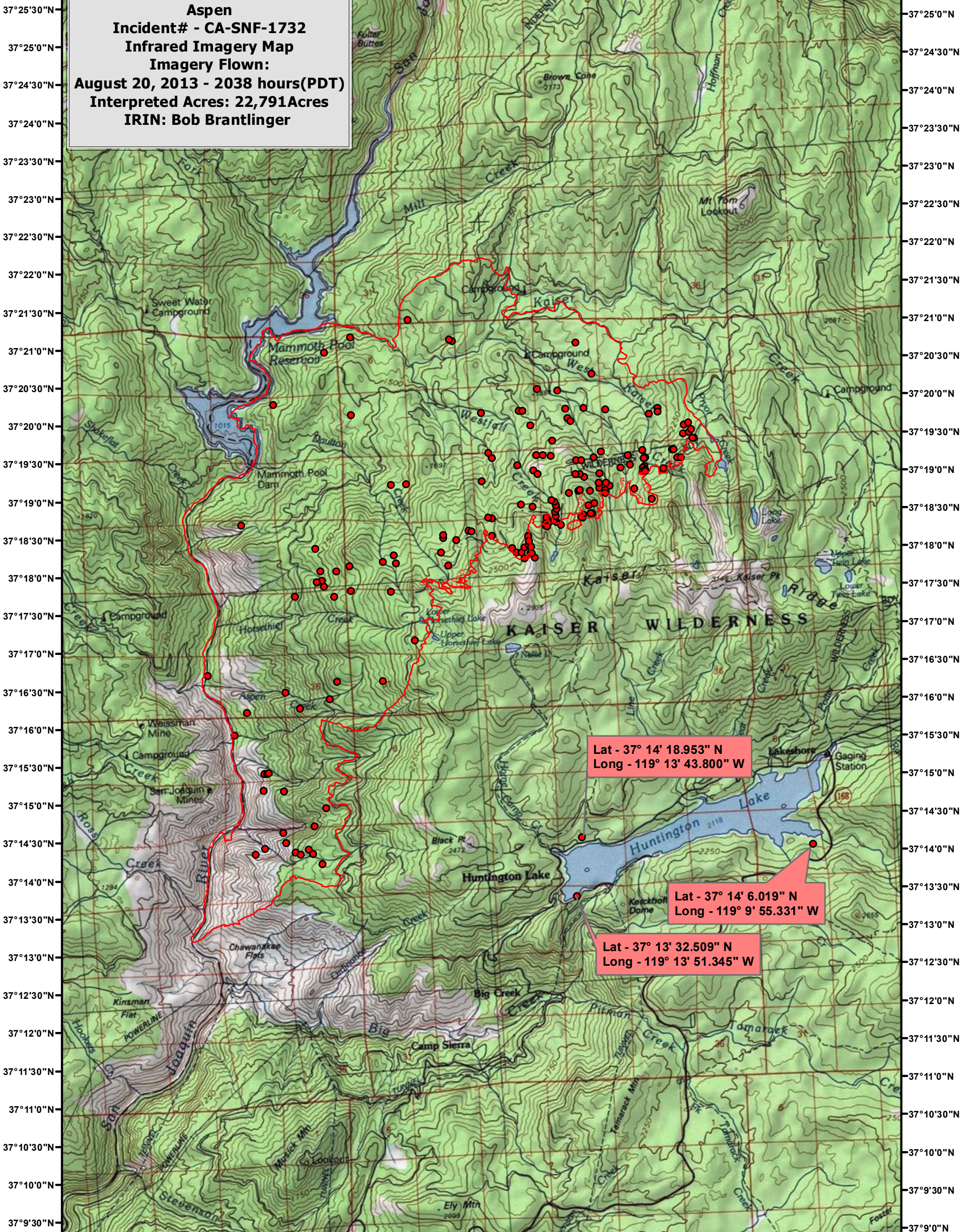


119°21'0"W 119°20'0"W 119°19'0"W 119°18'0"W 119°17'0"W 119°16'0"W 119°15'0"W 119°14'0"W 119°13'0"W 119°12'0"W 119°11'0"W 119°10'0"W 119°9'0"W 119°8'0"W



Aspen
Incident# - CA-SNF-1732
Infrared Imagery Map
Imagery Flown:
August 20, 2013 - 2038 hours(PDT)
Interpreted Acres: 22,791Acres
IRIN: Bob Brantlinger

Lat - 37° 14' 18.953" N
 Long - 119° 13' 43.800" W

Lat - 37° 14' 6.019" N
 Long - 119° 9' 55.331" W

Lat - 37° 13' 32.509" N
 Long - 119° 13' 51.345" W

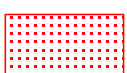
Legend



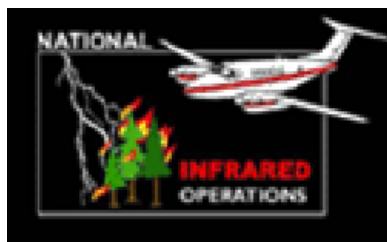
Heat Perimeter



Isolated Heat Source



Scattered Heat Source



0 0.5 1 2 Miles