

119°20'0"W

119°18'0"W

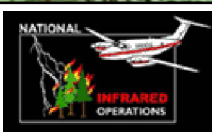
119°16'0"W

119°14'0"W

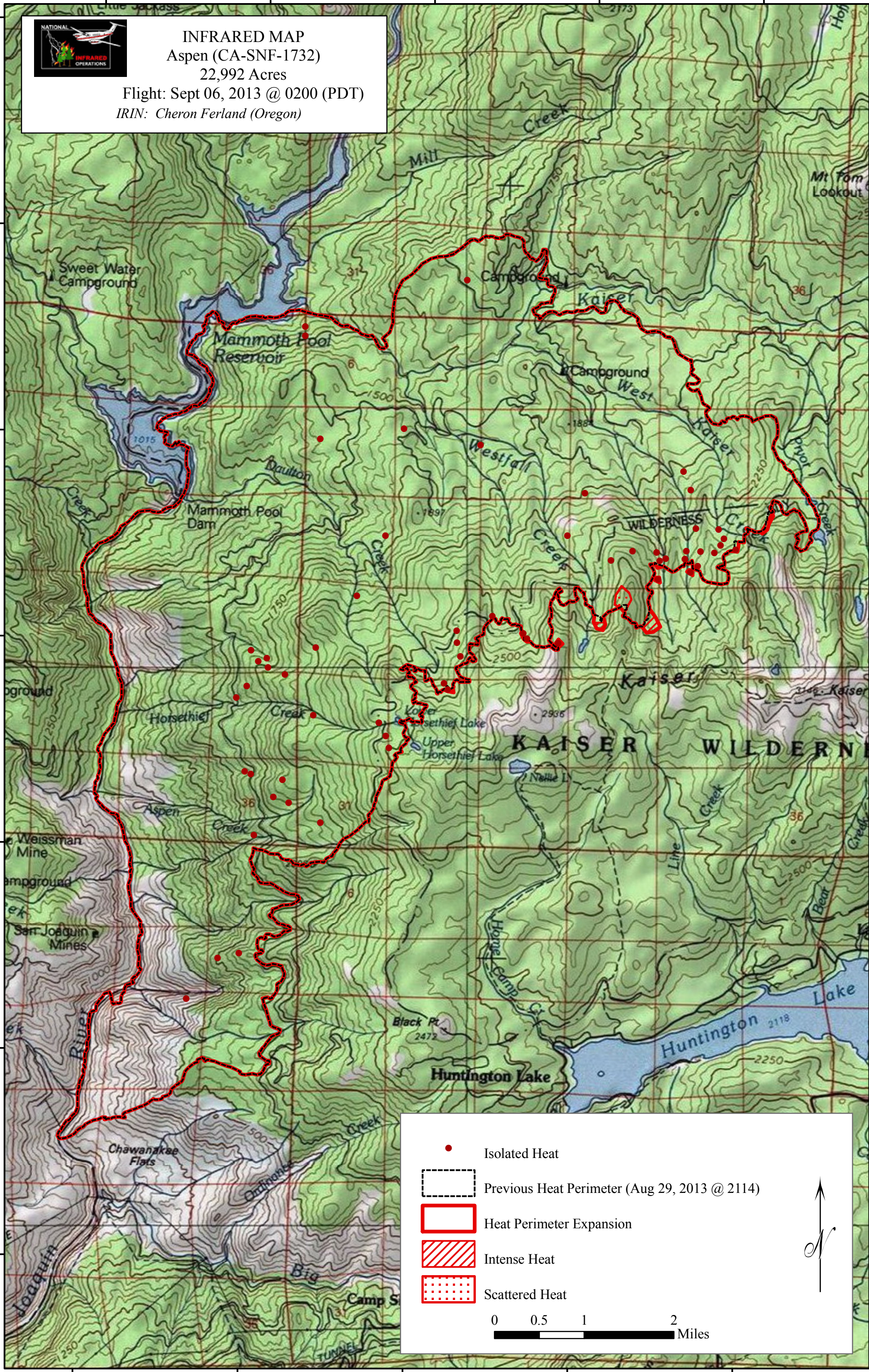
119°12'0"W

37°24'0"N
37°22'0"N
37°20'0"N
37°18'0"N
37°16'0"N
37°14'0"N
37°12'0"N

37°24'0"N
37°22'0"N
37°20'0"N
37°18'0"N
37°16'0"N
37°14'0"N
37°12'0"N



INFRARED MAP
Aspen (CA-SNF-1732)
22,992 Acres
Flight: Sept 06, 2013 @ 0200 (PDT)
IRIN: Cheron Ferland (Oregon)



- Isolated Heat
- Previous Heat Perimeter (Aug 29, 2013 @ 2114)
- Heat Perimeter Expansion
- Intense Heat
- Scattered Heat

0 0.5 1 2 Miles

119°20'0"W

119°18'0"W

119°16'0"W

119°14'0"W

119°12'0"W