



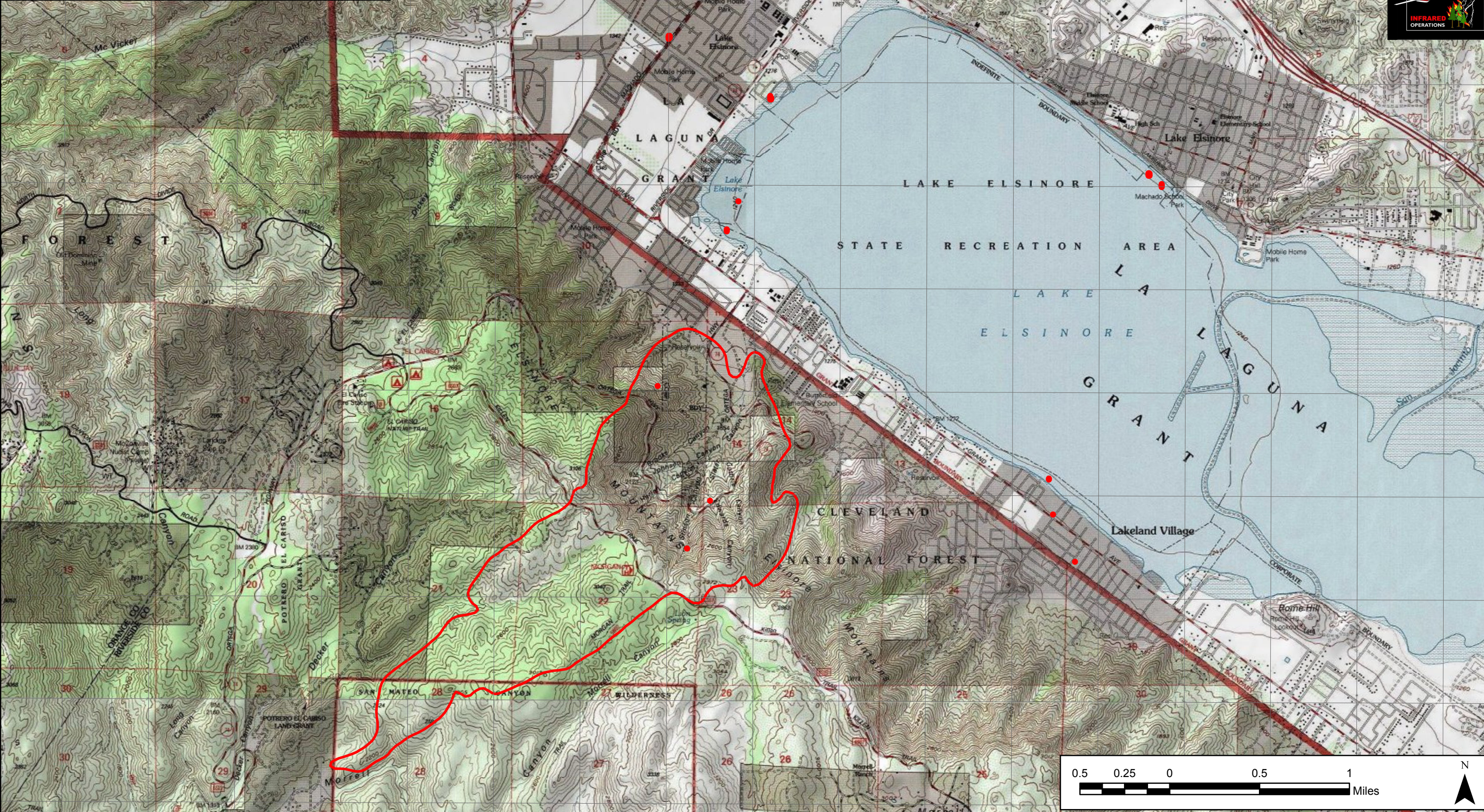


117°26'30"W 117°26'0"W 117°25'30"W 117°25'0"W 117°24'30"W 117°24'0"W 117°23'30"W 117°23'0"W 117°22'30"W 117°22'0"W 117°21'30"W 117°21'0"W 117°20'30"W 117°20'0"W 117°19'30"W 117°19'0"W 117°18'30"W

**FALLS FIRE INCIDENT**  
**CA-CNF-002512**  
**August 09, 2013**  
**Aquisition: August 08, 2013 at 2207 MDT**  
**Acres: 1,411**  
**IRIN: Tammy Hocut**

-  Heat Perimeter
-  Intense Heat Areas
-  Scattered Heat Areas
-  Isolated Heat Sources

NAD 1983 UTM Zone 11N



117°26'30"W 117°26'0"W 117°25'30"W 117°25'0"W 117°24'30"W 117°24'0"W 117°23'30"W 117°23'0"W 117°22'30"W 117°22'0"W 117°21'30"W 117°21'0"W 117°20'30"W 117°20'0"W 117°19'30"W 117°19'0"W 117°18'30"W