

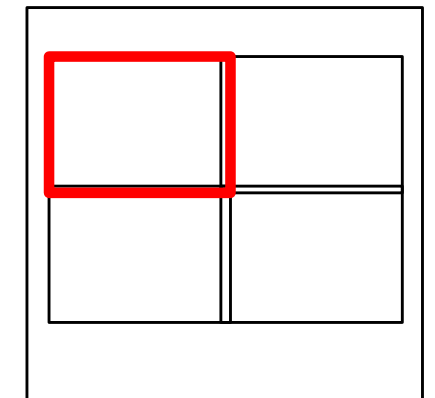
Grand Incident

CA-LPF-001281

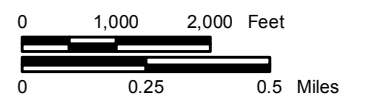
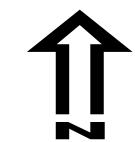
5/18/2013
0700 - 0700

Acres: 4358

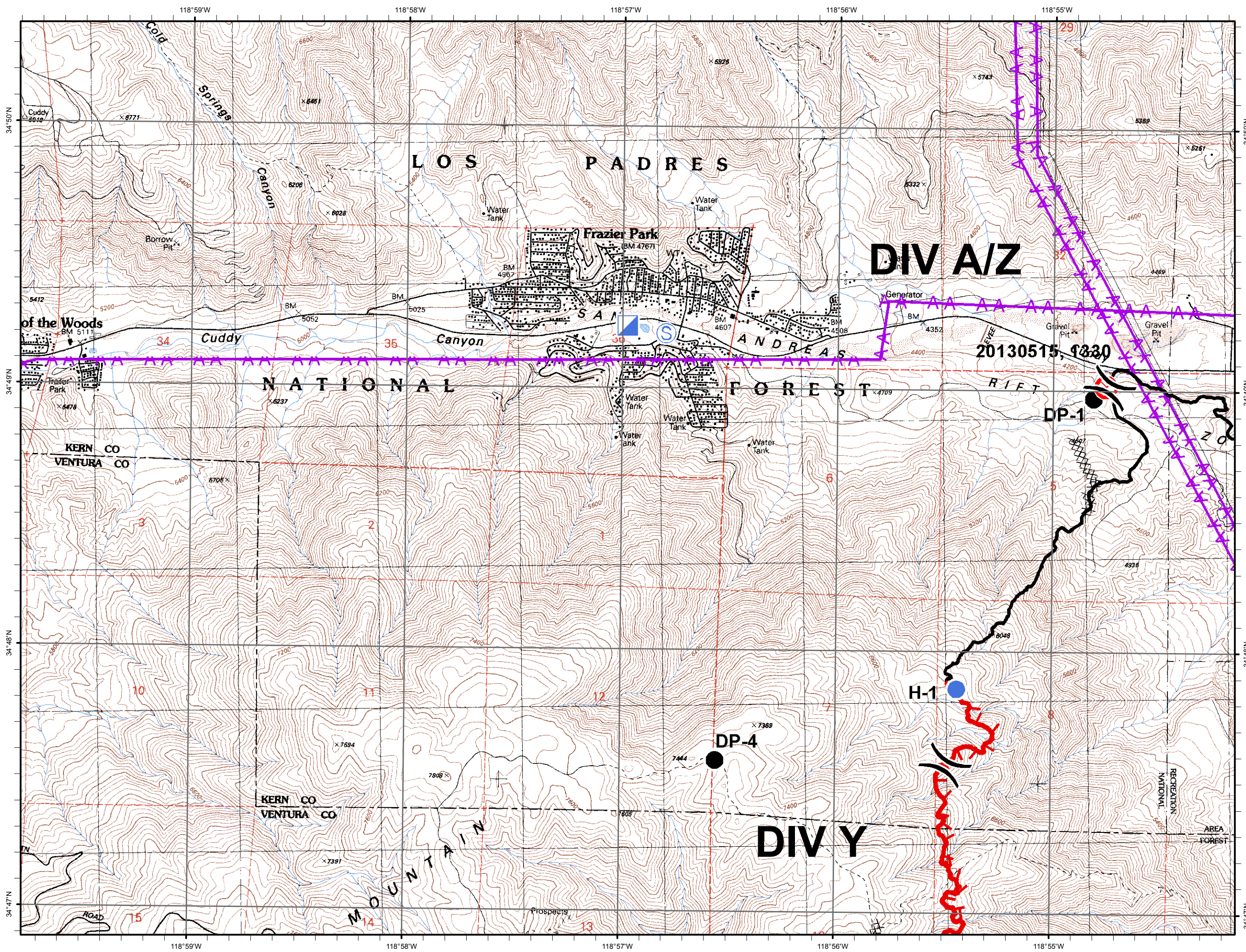
Page 1 of 4

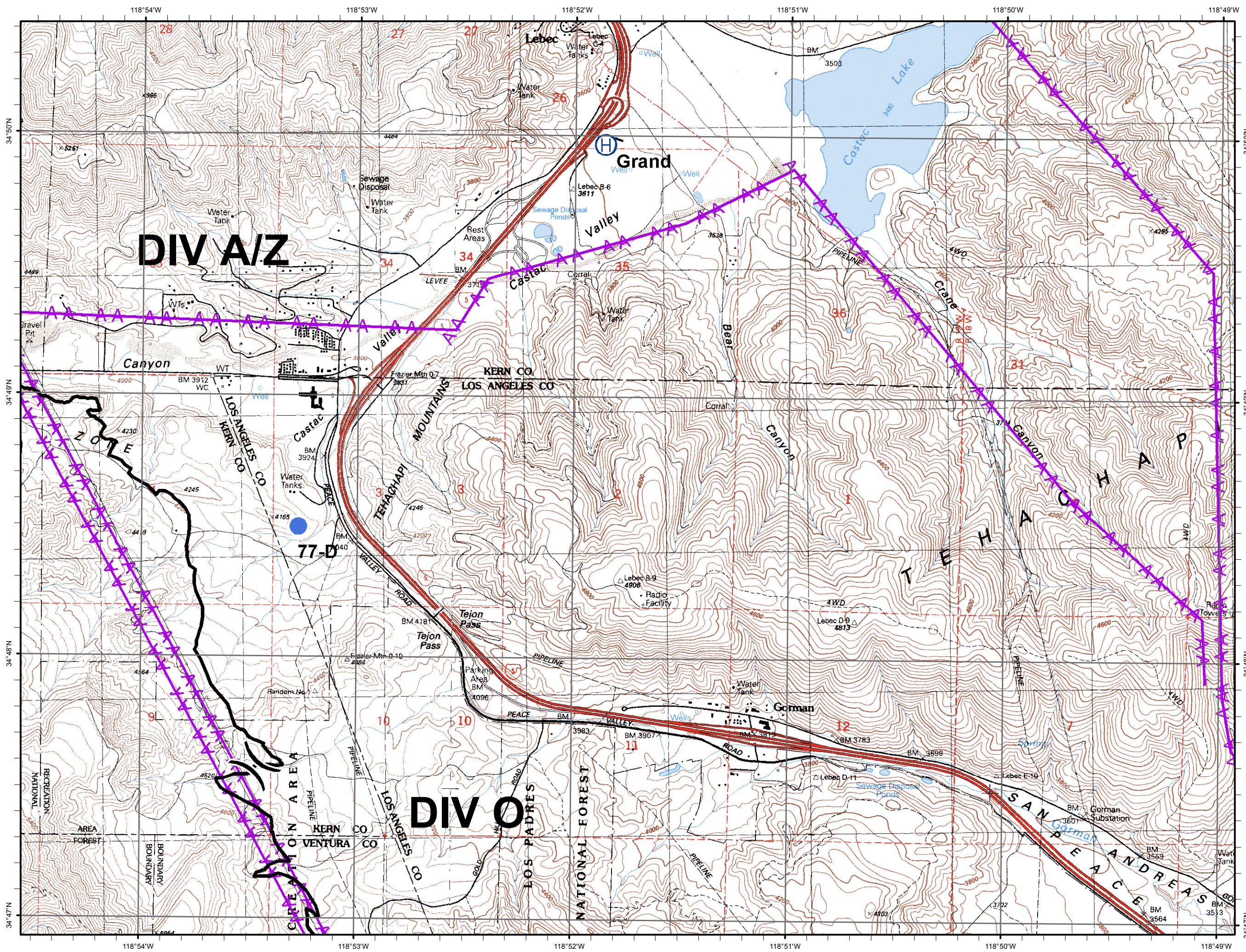


- () Division
- ⊗ Area of Fire Origin
- Drop Point
- Helispot
- Ⓡ Repeater
- Ⓢ Staging Area
- ▣ Incident Command Post
- Uncontrolled Fire Edge
- Completed Line
- AA Transmission Lines
- XXXX Completed Dozer Line

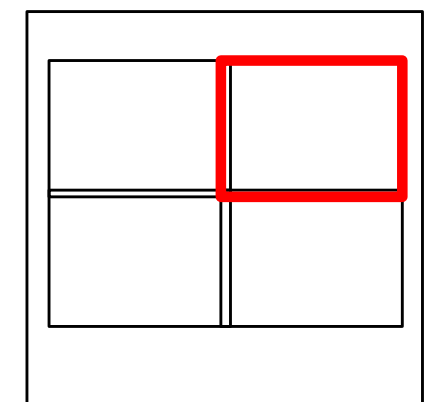


Map Datum: NAD83
Minor Grid Increments: .1 Minute





Grand Incident
CA-LPF-001281
 5/18/2013
 0700 - 0700
 Acres: 4358
 Page 2 of 4

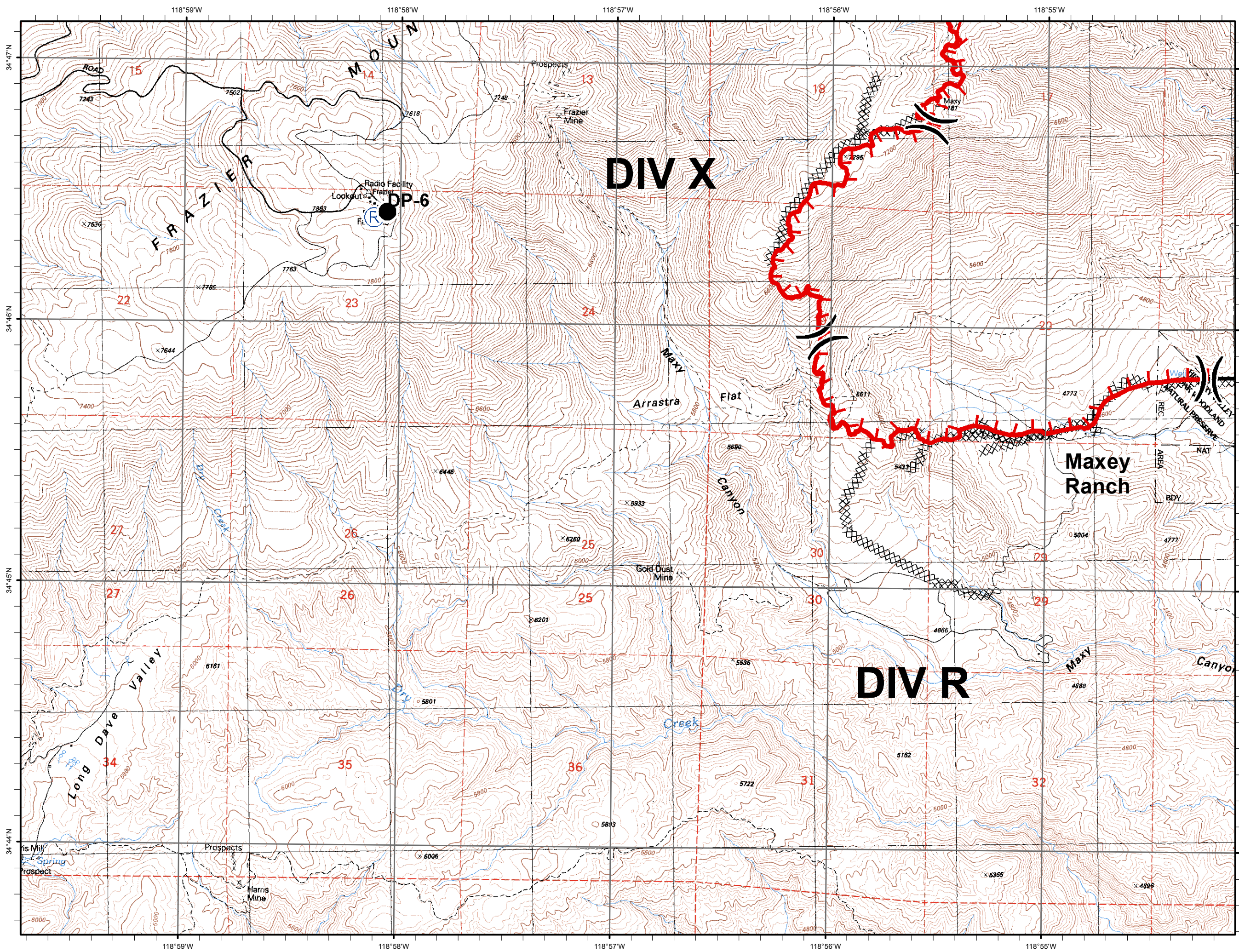


- () Division
- ⊗ Area of Fire Origin
- Drop Point
- Helispot
- Ⓡ Repeater
- Ⓢ Staging Area
- ▣ Incident Command Post
- Uncontrolled Fire Edge
- Completed Line
- △△ Transmission Lines
- XXXX Completed Dozer Line

↑

0 1,000 2,000 Feet
 0 0.25 0.5 Miles

Map Datum: NAD83
 Minor Grid Increments: .1 Minute



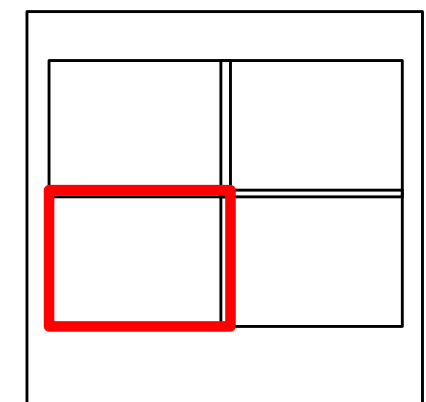
Grand Incident

CA-LPF-001281

5/18/2013
0700 - 0700

Acres: 4358

Page 3 of 4



- () Division
- ⊗ Area of Fire Origin
- Drop Point
- Helispot
- Ⓡ Repeater
- Ⓢ Staging Area
- ▣ Incident Command Post
- ┃ Uncontrolled Fire Edge
- Completed Line
- AA Transmission Lines
- XXXX Completed Dozer Line

↑

0 1,000 2,000 Feet

0 0.25 0.5 Miles

Map Datum: NAD83
Minor Grid Increments: .1 Minute

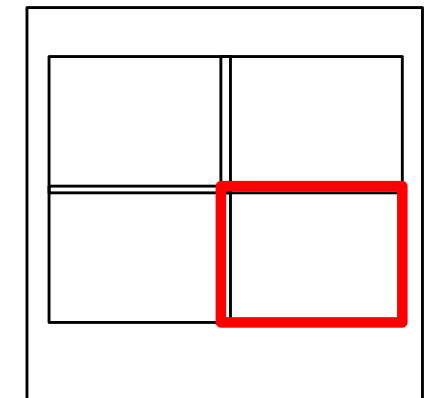
Grand Incident

CA-LPF-001281

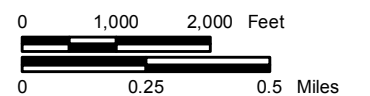
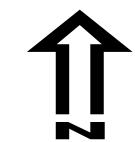
5/18/2013
0700 - 0700

Acres: 4358

Page 4 of 4



- () Division
- ⊗ Area of Fire Origin
- Drop Point
- Helispot
- Ⓡ Repeater
- Ⓢ Staging Area
- ▣ Incident Command Post
- ┌ Uncontrolled Fire Edge
- Completed Line
- AA Transmission Lines
- XXXX Completed Dozer Line



Map Datum: NAD83
Minor Grid Increments: .1 Minute

