

* CORRECTED *

Grand Fire

CALPF 001281

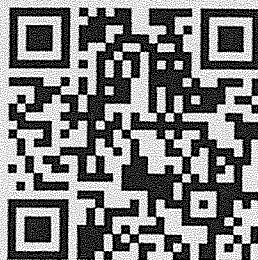
P5HG1V

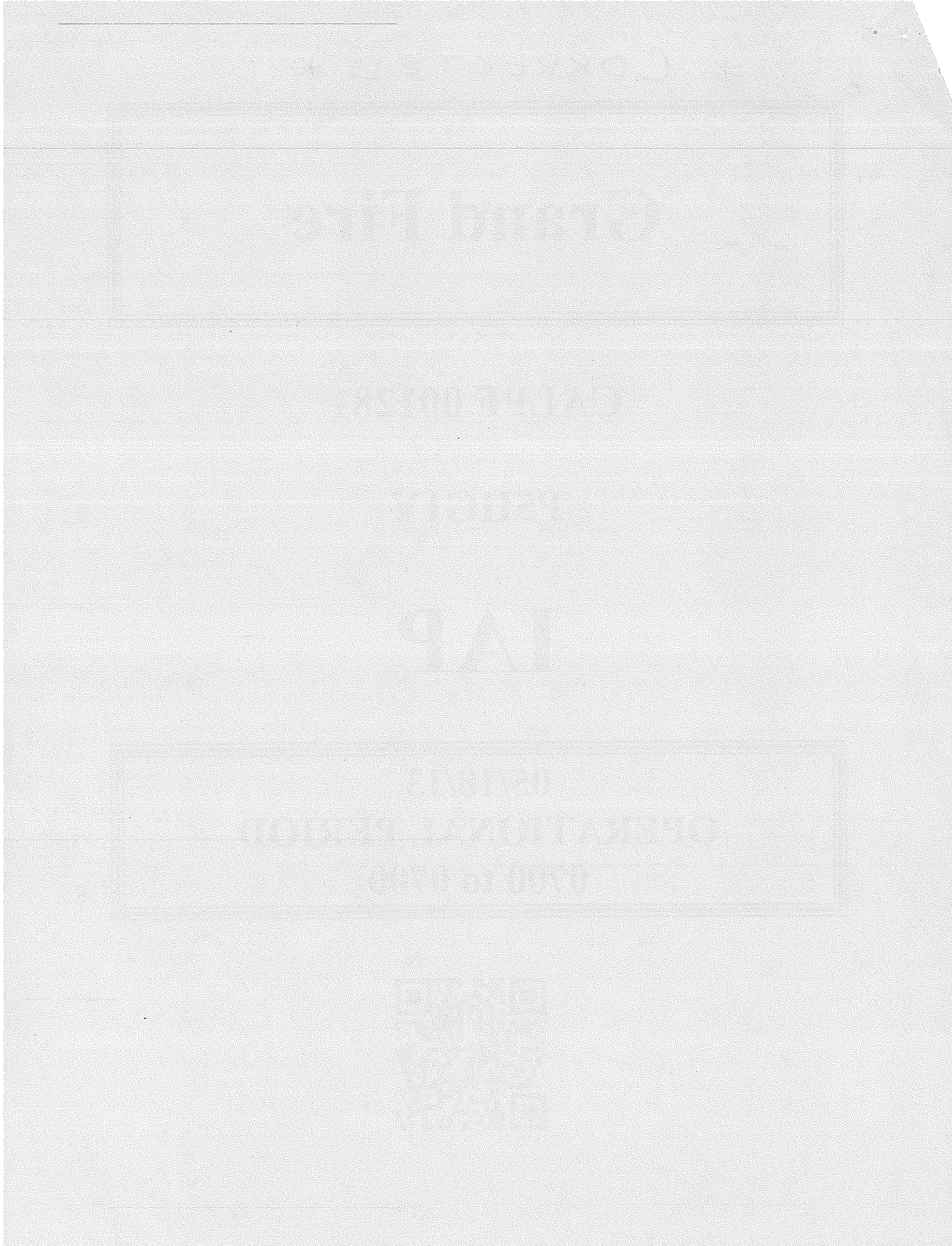
IAP

05/18/13


OPERATIONAL PERIOD

0700 to 0700






INCIDENT OBJECTIVES	1. Incident Name GRAND FIRE CA-LPF-001281	2. Date May 17, 2013	3. Time 2300
4. Operational Period 0700 05/18/2013 to 0700 05/19/2013			
5. General Control Objectives for the Incident (include alternatives) <u>Management Objectives:</u> <ul style="list-style-type: none"> • Provide for Firefighter and Public Safety • Protect Structures and Provide Structure Defense • Protect Infrastructure Assets Including: Edison's 500 KV Lines, Interstate 5 and Frazier Mountain Communications site • Coordinate Control Evacuations and Road Closures • Coordinate Suppression Activities on National Forest and State Park Lands through Resource Advisors • Protect Cultural Resources and Oak Woodland Reserve • Keep Costs Commensurate with Values at Risk <u>Control Objectives:</u> <ul style="list-style-type: none"> • Keep Fire South of Frazier Mountain Park Road • Keep Fire North of Gold Hill Road • Keep Fire West of I-5 • Keep Fire East of Frazier Mountain Road 			
6. Weather Forecast for Period See attached weather forecast			
7. General Safety Message See attached safety message.			
8. Attachments (mark if attached)			
<input checked="" type="checkbox"/> Organization List - ICS 203	<input checked="" type="checkbox"/> Medical Plan - ICS 206	<input checked="" type="checkbox"/> Incident Base Map	
<input checked="" type="checkbox"/> Div. Assignment Lists - ICS 204	<input checked="" type="checkbox"/> Incident Map	<input checked="" type="checkbox"/> Safety Message/ LCES Worksheet	
<input checked="" type="checkbox"/> Communications Plan - ICS 205	<input checked="" type="checkbox"/> Traffic Plan	<input checked="" type="checkbox"/> Weather Forecast	
9. Prepared by (Planning Section Chief) <i>Michael Miller</i>	10. Approved by (Incident Commander) <i>Robert G. Kesh</i>		

ORGANIZATION ASSIGNMENT LIST		9. Operations Section	
1. Incident Name Grand Fire		Chief	Rodriguez/Biermann/Van LobenSels
2. Date 5-18-13		a. Branch I- Division/Groups	
3. Time 2000		Night Safety	Flad
4. Operational Period 5-18/19-2013 0700-0700		Deputy	
Position	Name	Division/Group	A/Z Dier
5. Incident Commander and Staff		Division/Group	O Sebastian
Incident Commander	Kaslin/D'Andrea	Division/Group	R Ohs / Potter
Deputy IC	Chaney	Division/Group	X Steers/Martinelli Raines, Leake
Safety Officer	Santos/Brown	Division/Group	Y Hernander/Zavalla
Information Officer	Vogt	Fire Suppression	Shy
Liaison Officer	Villalpando	b. Branch II - Division/Groups	
6. Agency Representative		Branch Director	
Agency	Name	Deputy	
LPF	Sue Exline, Rick Larson	Division/Group	
Cal Fire	Santana	Division/Group	
		Division/Group	
		Division/Group	
		Division/Group	
		Division/Group	
7. Planning Section		c. Branch III - Division/Groups	
Chief	Post	Branch Director	
Deputy	Mills	Deputy	
Resources Unit	Garcia/Oaks/ Wilson	Division/Group	
Situation Unit	Bloxham/Larkin/Johnson	Division/Group	
Documentation Unit	Balazer	Division/Group	
Demobilization Unit	Sharp	Division/Group	
Technical Specialists	Luckenbach	Division/Group	
Human Resources	Genzmer	Division/Group	
Training	Irwin	d. Air Operations Branch	
GIS Specialist	Kennady/Elwood/Gikas	Air Operations Branch Director	Packwood
Resource Advisors	Melody Fountain, Ivana Noell, Greg Thompson, Kim Mathews	Air Attack Supervisor	
Cultural Specialist / Arch Pete Zavalla		Air Support Supervisor	
		Helicopter Coordinator	
		Air Tanker Coordinator	
8. Logistics Section		10. Finance Section	
Chief	Pedersen	Chief	Keene
Deputy		Deputy	
Supply Unit		Time Unit	
Facilities Unit	Solis	Procurement Unit	Freeman
Ground Support Unit	McCoy	Compensation/Claims Unit	
Communications Unit	Webb	Cost Unit	
Medical Unit		Prepared by (Deputy Plan Section Chief)	
Security Unit		Mike Mills	
Food Unit	Mike Chapman		

DIVISION ASSIGNMENT LIST			1. Branch		2. Division/Group A/Z		
3. Incident Name GRAND			4. Operational Period Date: 05/18-19/13 Time: 0700-0700				
5. Operations Personnel							
Operations Chief		Rodriguez/Biermann/ VanLobenSels		Division/Group Supervisor		Michael Dier ✓	
Branch Director				Air Attack Supervisor No.			
6. Resources Assigned this Period							
Strike Team/Task Force/ Resource Designator	Leader	Number Persons	Trans. Needed	Drop Off PT./Time		Pick Up PT./Time	
✓ ENG LPF 53	ISAAC BAEZA	53	N	0700		1900	
✓ ENG LPF 75	CHARLES PRICE	5	N	0700		1900	
7. Control Operations PATROL STATUS MOPUP ANY SMOKES W/IN 300'							
8. Special Instructions CONDOR HABITAT- ALL TRASH MUST BE REMOVED FROM THE FIRE LINE AND DROP POINTS DAILY TO PROTECT CONDORS.							
9. Division/Group Communication Summary							
Function	Frequency	System	Channel	Function	Frequency	System	Channel
Command	RX 170.4125 TX 165.9625		NIFC CMD 10 TONE 3	Air to Ground	RX/TX 167.9500		
Tactical Div/Group	RX/TX 168.0500		NIFC TAC 1	Air Guard	RX/TX 168.5250		
Prepared by (Resource Unit Ldr.) Justin Wilson		Approved by (Planning Sect. Ch.) <i>[Signature]</i>			Date 05/17/13		2300

4

DIVISION ASSIGNMENT LIST			1. Branch		2. Division/Group O			
3. Incident Name GRAND			4. Operational Period Date: 05/18-19/13 Time: 0700-0700					
5. Operations Personnel								
Operations Chief		Rodriguez/Biermann/ VanLobenSels		Division/Group Supervisor		Michael Sebastian ✓		
Branch Director				Air Attack Supervisor No.				
6. Resources Assigned this Period								
Strike Team/Task Force/ Resource Designator	Leader		Number Persons	Trans. Needed	Drop Off PT./Time		Pick Up PT./Time	
✓ * STC SLU 9340C	PHILL VENERIS		16	N	0700		0700	
✓ W/T ANF E-22	PABLO ARRIAGA		2	N	0700		1900	
✓ W/T SLU E-21016 THOMPSON	COREY THOMPSON		2	N	0700		1900	
✓ SOFR	DAVE BAKER		1	N	0700		1900	
7. Control Operations HAUL OUT HOSE MOPUP 300'								
8. Special Instructions CONDOR HABITAT- ALL TRASH MUST BE REMOVED FROM THE FIRE LINE AND DROP POINTS DAILY TO PROTECT CONDORS. * 24 HOUR RESOURCE ALL OTHERS ARE 12 HOUR RESOURCE								
9. Division/Group Communication Summary								
Function	Frequency	System	Channel		Function	Frequency	System	Channel
Command	RX 170.4125 TX 165.9625		NIFC CMD 10 TONE 3		Air to Ground	RX/TX 167.9500		
Tactical Div/Group	RX/TX 168.2000		NIFC TAC 2		Air Guard	RX/TX 168.6250		
Prepared by (Resource Unit Ldr.) Justin Wilson			Approved by (Planning Sect. Ch.) 			Date 05/17/13		2300

5

DIVISION ASSIGNMENT LIST			1. Branch		2. Division/Group R			
3. Incident Name GRAND			4. Operational Period Date: 05/18-19/13 Time: 0700-0700					
5. Operations Personnel								
Operations Chief		Rodriguez/Biermann/ VanLobenSels		Division/Group Supervisor		JEFF OHS Potter (T)		
Branch Director				Air Attack Supervisor No.				
6. Resources Assigned this Period								
Strike Team/Task Force/ Resource Designator	Leader		Number Persons	Trans. Needed	Drop Off PT./Time		Pick Up PT./Time	
✓ * STC FKU 9430C →	✗ JIM FITZGERALD		16	N	0700	0700		
✓ STC ANF 1604C	KURT YEAROUT		23	N	0700	1900		
✓ CRW SQF SPRINGVILLE IHC	JEREMY BUSH		23	N	0700	1900		
✓ CRW SQF 2 <i>Black Eagles</i>	GUSTAVO SANTOYO- GALLEGOS		23	N	0700	1900		
✓ CRW SQF 2 <i>Scorpion</i>	ISAIN GARCIA-LEMUS		22	N	0700	1900		
✓ CRW BDF TAHQUITZ	BRYAN SCOTT		19	N	0700	1900		
✓ CRW KRN CREW 81	CASEY PAYNE		18	N	0700	1900		
✓ DOZ LPF 4	AARON PENTON		2	N	0700	1900		
✓ DOZ ANF 1	DANIEL GALLANT		2	N	0700	1900		
7. Control Operations								
HOLD AND CONTROL FIRELINE ✓ W/T LAC 136 ✓ W/T 21011 AQUA								
IMPROVE FIRELINE WHERE NEEDED ✓ W/T LAC 128 ✓ W/T 21012 A-1								
MOPUP 200'								
8. Special Instructions								
<i>SOFR Aiforgue SOFR Betancourt</i>								
CONDOR HABITAT- ALL TRASH MUST BE REMOVED FROM THE FIRE LINE AND DROP POINTS DAILY TO PROTECT CONDORS								
PROTECT CULTURAL RESOURCES IN THE AREA, IDENTIFIED WITH BLUE, OR BLACK AND PINK, OR BLACK AND YELLOW FLAGGING								
* 24 HOUR RESOURCE ALL OTHER ARE 12 HOUR RESOURCES								
9. Division/Group Communication Summary								
Function	Frequency	System	Channel		Function	Frequency	System	Channel
Command	RX 168.0750 TX 170.4250		NIFC CMD 3 TONE 3		Air to Ground	RX/TX 167.9500		
Tactical Div/Group	RX/TX 168.6000		NIFC TAC 3		Air Guard	RX/TX 168.6250		
Prepared by (Resource Unit Ldr.) Justin Wilson			Approved by (Planning Sect. Ch.) <i>M. M. S.</i>			Date 05/17/13		2300

6

DIVISION ASSIGNMENT LIST			1. Branch		2. Division/Group X			
3. Incident Name GRAND			4. Operational Period Date: 05/18-19/13 Time: 0700-0700					
5. Operations Personnel								
Operations Chief		Rodriguez/Biermann/ VanLobenSels		Division/Group Supervisor		ROGER RAINES, TODD LEAKE (f)		
Branch Director				Air Attack Supervisor No.				
6. Resources Assigned this Period								
Strike Team/Task Force/ Resource Designator	Leader		Number Persons	Trans. Needed	Drop Off PT./Time		Pick Up PT./Time	
STC CHF 6631C	JOEL MORTIER		27	N	0700		1900	
CRW KRN RIO BRAVO IHC	JAMES ROCHA		22	N	0700		1900	
CREWLPF ARROYO GRANDE IHC	MICHAEL HICKEY		18	N	0700		1900	
CRW SQF HORSESHOE IHC	JOSE GONZALES		18	N	0700		1900	
CRW ENF ELDORADO IHC	WILLIAM HARRIS		18	N	0700		1900	
CRW MNF ELK MT IHC	CHEVEYO MUNK		20	N	0700		1900	
CRW HTF BLACK MOUNTAIN IHC	MATT HOGGARD		19	N	0700		1900	
CRW CND KERN VALLEY IHC	LEIF MATHIESEN		21	N	0700		1900	
7. Control Operations HOLD AND CONTROL FIRELINE IMPROVE FIRELINE WHERE NEEDED, MOP UP 200'								
8. Special Instructions CONDOR HABITAT- ALL TRASH MUST BE REMOVED FROM THE FIRE LINE AND DROP POINTS DAILY TO PROTECT CONDORS. PROTECT CULTURAL RESOURCES IN THE AREA, IDENTIFIED WITH BLUE, OR BLACK AND PINK, OR BLACK AND YELLOW FLAGGING.								
9. Division/Group Communication Summary								
Function	Frequency	System	Channel		Function	Frequency	System	Channel
Command	RX 168.0750 TX 170.4250		NIFC CMD 3 TONE 10		Air to Ground	RX/TX 167.9500		
Tactical Div/Group	RX/TX 166.7250		NIFC TAC 5		Air Guard	RX/TX 168.6250		
Prepared by (Resource Unit Ldr.) Justin Wilson			Approved by (Planning Sect. Ch.) <i>Mike Math</i>			Date 05/17/13		2300

DIVISION ASSIGNMENT LIST			1. Branch		2. Division/Group X (CONT)			
3. Incident Name GRAND			4. Operational Period Date: 05/18-19/13 Time: 0700-0700					
5. Operations Personnel								
Operations Chief		Rodriguez/Biermann/ VanLobenSels		Division/Group Supervisor		ROGER RAINES, TODD LEAKE (f)		
Branch Director				Air Attack Supervisor No.				
6. Resources Assigned this Period								
Strike Team/Task Force/ Resource Designator	Leader		Number Persons	Trans. Needed	Drop Off PT./Time		Pick Up PT./Time	
✓ CRW BDU 9389G → Y	MATT EDMISTON		31	N	0700		1900	
✓ W/T PVT 49ER PRESSURE & WATER	DICK SASSER		1	N	0700		1900	
✓ W/T BDF 12	JOSHUA RABORN		1	N	0700		1900	
✓ W/T CND	JAMES DAVIS			N	0700		1900	
✓ SOFR	RICHARD GEARHART		1	N	0700		1900	
✓ MED TEAM 1	RALPH GLADWIN/ DANIEL TESSIERI		2	N	0700		1900	
✓ STC FKU 9430C								
7. Control Operations HOLD AND CONTROL FIRELINE IMPROVE FIRELINE WHERE NEEDED MOPUP 200' <i>989 9389G → Y</i>								
8. Special Instructions CONDOR HABITAT- ALL TRASH MUST BE REMOVED FROM THE FIRE LINE AND DROP POINTS DAILY TO PROTECT CONDORS. PROTECT CULTURAL RESOURCES IN THE AREA, IDENTIFIED WITH BLUE, OR BLACK AND PINK, OR BLACK AND YELLOW FLAGGING.								
9. Division/Group Communication Summary								
Function	Frequency	System	Channel		Function	Frequency	System	Channel
Command	RX 168.0750 TX 170.4250		NIFC CMD 3 tone 10		Air to Ground	RX/TX 167.9500		
Tactical Div/Group	RX/TX 166.7250		NIFC TAC 5		Air Guard	RX/TX 168.6250		
Prepared by (Resource Unit Ldr.) Justin Wilson			Approved by (Planning Sect. Ch.) <i>[Signature]</i>			Date 05/17/13		2300

8

DIVISION ASSIGNMENT LIST		1. Branch		2. Division/Group Y			
3. Incident Name GRAND		4. Operational Period Date: 05/18-19/13 Time: 0700-0700					
5. Operations Personnel							
Operations Chief Rodriguez/Biermann/ VanLobenSels		Division/Group Supervisor PHIL HERNANDEZ, ANTHONY ZAVALLA (t)					
Branch Director		Air Attack Supervisor No.					
6. Resources Assigned this Period							
Strike Team/Task Force/ Resource Designator	Leader	Number Persons	Trans. Needed	Drop Off PT./Time	Pick Up PT./Time		
✓ STG AEU 9275G *	KEVIN BOHALL	33	N	0700	1900		
✓ STG BDU 9370G	PETER SCHOENDIENST	30	N	0700	1900		
✓ W/T E40 KRN 1255							
✓ ENG LPF 72							
✓ CRW LPF Regulars							
✓ CRW BDU 9389G							
7. Control Operations HOLD AND CONTROL FIRELINE IMPROVE FIRELINE WHERE NEEDED MOPUP 200'							
8. Special Instructions CONDOR HABITAT- ALL TRASH MUST BE REMOVED FROM THE FIRE LINE AND DROP POINTS DAILY TO PROTECT CONDORS.							
9. Division/Group Communication Summary							
Function	Frequency	System	Channel	Function	Frequency	System	Channel
Command	RX 168.0750 TX 170.4250		NIFC CMD 3 TONE 10	Air to Ground	RX/TX 167.9500		
Tactical Div/Group	RX/TX 166.7750		NIFC TAC 6	Air Guard	RX/TX 168.6250		
Prepared by (Resource Unit Ldr.) Justin Wilson		Approved by (Planning Sect. Ch.) <i>Mike Miller</i>			Date 05/17/13		2300

DIVISION ASSIGNMENT LIST			1. Branch		2. Division/Group FIRE SUPPRESSION AND REPAIR			
3. Incident Name GRAND			4. Operational Period Date: 05/18-19/13 Time: 0700-0700					
5. Operations Personnel								
Operations Chief		Rodriguez/Biermann/ VanLobenSels		BURNED AREA RESPONSE SPEC.		DAVID SHY ✓		
Branch Director				Air Attack Supervisor No.				
6. Resources Assigned this Period								
Strike Team/Task Force/ Resource Designator	Leader		Number Persons	Trans. Needed	Drop Off PT./Time		Pick Up PT./Time	
CRW SQF BLACK EAGLES	<i>R</i>			N	0700		1900	
CRW LPF CHUCHUPATE	<i>Helitack</i> DEAN HALL		10	N	0700		1900	
✓ CRW ANF FUEGO RANGERS	HECTOR SANCHEZ		20	N	0700		1900	
CRW LPF LOS PADRES REGULAR	CHRISTOPHER WOOD <i>Bo "Y"</i>		18	N	0700		1900	
✓ CRW CNF DESCANSO	MARTIE HALE		23	N	0700		1900	
CRW SQF SCORPIONS	<i>(R) 9397G C-18 Davis</i>			N	0700		1900	
✓ STG RRU 9374G	JACK FRANKLIN		30	N	0700		1900	
✓ STG RRU 9390G	DAVID LORD		29	N	0700		1900	
7. Control Operations IMPLEMENT FIRE SUPPRESSION REPAIR PLAN								
8. Special Instructions EXCAVATOR- PULL THE BRUSH AND TREES THAT HAVE BEEN PUSHED FROM THE LINE INTO THE STANDING TREES BACK ONTO THE LINE LEAVING A 1 TO 1.5 BLADE WIDE CLEAR AREA								
9. Division/Group Communication Summary								
Function	Frequency	System	Channel		Function	Frequency	System	Channel
Command					Air to Ground			
Tactical Div/Group	RX/TX 168.2500		NIFC TAC7		Air Guard			
Prepared by (Resource Unit Ldr.) Justin Wilson			Approved by (Planning Sect. Ch.) <i>M. M. M.</i>			Date 05/17/13		2300

DIVISION ASSIGNMENT LIST			1. Branch		2. Division/Group FIRE SUPPRESSION AND REPAIR (CONT)			
3. Incident Name GRAND			4. Operational Period Date: 05/18-19/13 Time: 0700-0700					
5. Operations Personnel								
Operations Chief		Rodriguez/Biermann/ VanLobenSels		BURNED AREA RESPONSE SPEC.		DAVID SHY		
Branch Director				Air Attack Supervisor No.				
6. Resources Assigned this Period								
Strike Team/Task Force/ Resource Designator		Leader		Number Persons	Trans. Needed	Drop Off PT./Time	Pick Up PT./Time	
✓	STG SLU 9394G	JEFF ELMORE		38	N	0700	1900	
✓	STL TUU 9418L	ALAN SHERER		8	N	0700	1900	
✓	DOZ ANF 3	CHARLIE FERRIS		2	N	0700	1900	
✓	TFLD	MATTHEW CONKLIN		1	N	0700	1900	
	GRADER TBA	<i>no show GRD KRN TATE</i>			N	0700	1900	
	GRADER TBA	<i>no show</i>			N	0700	1900	
	EXCAVATOR TBA	<i>no show Kill order</i>			N	0700	1900	
✓	W/T PVT ALONSON	KEVIN WILSON		2	N	0700	1900	
✓	W/T PVT MDE	GREG ZAVALA		2	N	0700	1900	
✓	W/T PVT MDE	KEVIN OCCONNELL		2	N	0700	1900	
✓	W/T PVT S. BENNET	JONATHON ZAVALA		2	N	0700	1900	
✓	READ	MELODY FOUNTAIN		1	N	0700	1900	
7. Control Operations IMPLEMENT FIRE SUPPRESSION REPAIR PLAN <i>GRD KRN TATE E-21040</i>								
8. Special Instructions EXCAVATOR- PULL THE BRUSH AND TREES THAT HAVE BEEN PUSHED FROM THE LINE INTO THE STANDING TREES BACK ONTO THE LINE LEAVING A 1 TO 1.5 BLADE WIDE CLEAR AREA								
9. Division/Group Communication Summary								
Function	Frequency	System	Channel	Function	Frequency	System	Channel	
Command				Air to Ground				
Tactical Div/Group	RX/TX 168.2500		NIFC TAC7	Air Guard				
Prepared by (Resource Unit Ldr.) Justin Wilson			Approved by (Planning Sect. Ch.) <i>Mike M...</i>			Date 05/17/13		2300

DIVISION ASSIGNMENT LIST			1. Branch		2. Division/Group FIRE SUPPRESSION AND REPAIR (CONT)		
3. Incident Name GRAND			4. Operational Period Date: 05/18-19/13 Time: 0700-0700				
5. Operations Personnel							
Operations Chief		Rodriguez/Biermann/ VanLobenSels		BURNED AREA RESPONSE SPEC.		DAVID SHY	
Branch Director				Air Attack Supervisor No.			
6. Resources Assigned this Period							
Strike Team/Task Force/ Resource Designator	Leader		Number Persons	Trans. Needed	Drop Off PT./Time		Pick Up PT./Time
✓ READ	GREG THOMPSON		1	N	0700		1900
✓ FOBS	DAMIAN GUILLIANI		1	N	0700		1900
✓ FOBS	JOHN HUECKER		1	N	0700		1900
✓ FOBS	GUY ANDERSON		1	N	0700		1900
✓ FOBS	CHIRS BRENZEL		1	N	0700		1900
✓ FOBS (I)	LEE WALDRON		1	N	0700		1900
CPW VNC 12	Spykerman		21				
STG THU 9473G			21				
7. Control Operations IMPLEMENT FIRE SUPPRESSION REPAIR PLAN							
8. Special Instructions EXCAVATOR- PULL THE BRUSH AND TREES THAT HAVE BEEN PUSHED FROM THE LINE INTO THE STANDING TREES BACK ONTO THE LINE LEAVING A 1 TO 1.5 BLADE WIDE CLEAR AREA							
9. Division/Group Communication Summary							
Function	Frequency	System	Channel	Function	Frequency	System	Channel
Command				Air to Ground			
Tactical Div/Group	RX/TX 168.2500		NIFC TAC7	Air Guard			
Prepared by (Resource Unit Ldr.) Justin Wilson		Approved by (Planning Sect. Ch.) <i>[Signature]</i>			Date 05/17/13		2300

12

AIR OPERATIONS SUMMARY OPERATIONAL PERIOD DATE: DAY SHIFT DATE: 05/18/13 START: 0700 END: 0700

(Expanded Form for Large Operations)

1. INCIDENT NAME: **Grand** 2. PREPARED BY: **S. Packwood** 3. PREPARED DATE/TIME: **05/17/13 1900**

4. REMARKS (Safety Notes, Hazards, Air Operations Special Equipment, etc.):
Condor Habitat
Power lines / Military Training Route
 PREPARED DATE/TIME: **05/17/13 1900** SUNRISE: **0552** SUNSET : **1955** ALTITUDE: **11,000' MSL**
 CUTOFF: **1925** FREQ. **123.1750** NOTAM **3-9950**

* All GPS data to be collected (degrees, minutes & decimal minutes)
 ** Avoid aerial application of retardant or foam within 300' of waterways, bodies of water. If retardant is dropped within these areas, **notify**
 AOBD with Lat & Long, est. of gallons, and a map.
 ***Reload Fox / Santa Maria / Porterville
 ****TRACK RETARDANT DROP LOCATIONS

6. PERSONNEL		Phone	FREQUENCIES	AM	FM	8. FIXED-WING # Avail / Type/ Make-Model / FAA N# / Base(s)
AOBD:	Scott Packwood	530-310-2236	AIR/AIR FW:		169.150	
ATGS:			AIR/AIR RW:	123.175		
H/CO:	Jon Chin	760-250-6230	AIR/GROUND:		167.950	
ASGS:	Tom Swanson	805-903-3481	DECK:	163.100		
HEBM:	Scott Corn	530 227-4887	COMD NIFC 10	TX 165.9625 RX 170.4125	tone 3 tone	131.8
	Santa Maria Tanker Base	805 937-5059	AIR GUARD			168.625
	Fox Reload Base	661 723-2740	TOLC			

9. HELICOPTERS (Use Additional Sheets As Necessary)

FAA N#	TY	MAKE/MODEL	BASE	AVAIL	START	REMARKS	FAA N#	TY	MAKE/MODEL	BASE	AVAIL	START	REMARKS
N383SH	3	A-29 Bell 206L3		0730	0800	Helco / Recon							
C534	2	A-4 Bell 212		0730	0800	Water / Pax / Slings							
Copter 407	2	A-32 Bell 205		0730	0800	Water Drop							

B

10. TASK/MISSION/ASSIGNMENT (Use ICS-220a if additional space needed; Type/Function includes: Air Tactical, Retardant, Recon, Personnel Transport, Water Dropping, etc.)

TYPE/FUNCTION	NAME OF PERSONNEL OR CARGO (if applicable) OR INSTRUCTIONS FOR TACTICAL AIRCRAFT	MISSION START	8FLY FROM	FLY TO
Air Tactical	Direct A/C operations, coordinate with Ops.			
Bucket support	HELICOPTERS. SUPPORT CREWS ON THE LINE.			
PAX/Cargo	SLING LOADS NEED TO BE ORDERED BY 1400 HRS. ORDER THROUGH COMMUNICATIONS			
Medevac	See Medical Plan for specifics. KRN Copter 407 available for Night Hoist Rescue			
Recon	As requested through AOBD			
Helispot Construction	Once helispot established/approved/numbered, notify Air Ops with Lat Long			
Helitack	When on fireline, be sure to follow LCEs, 10s and 18s. Use Lookouts and Trigger Points.			
Helibase CFR	Kern County Fire Dept. Engine 454, Req. # E-21026			
Communications				

11. Helispot, Dip Site Portable Retardant Base and Sling Spot Information-

HELLI- SPOTS #	DIP SITES	SLING SPOT #	DIVISION	LATITUDE	LONGITUDE	REMARKS
H-1			X/Y	34° 47.859	118° 55.437	6000' HOGE
	77D			34° 48.590	118° 53.263	Ground Fill Site

11



CAL FIRE INCIDENT MANAGEMENT TEAM 6



SAFETY MESSAGE	1. INCIDENT NAME: GRAND	2. DATE PREPARED: May 17, 2013	3. TIME PREPARED: 1600
	4. PREPARED BY: Curtis Brown IMT6 SOF1(T)	5. LEADER NAME: Gabriel Santos IMT6 SOF1	6. OPERATIONAL PERIOD: 0700 TO 0700

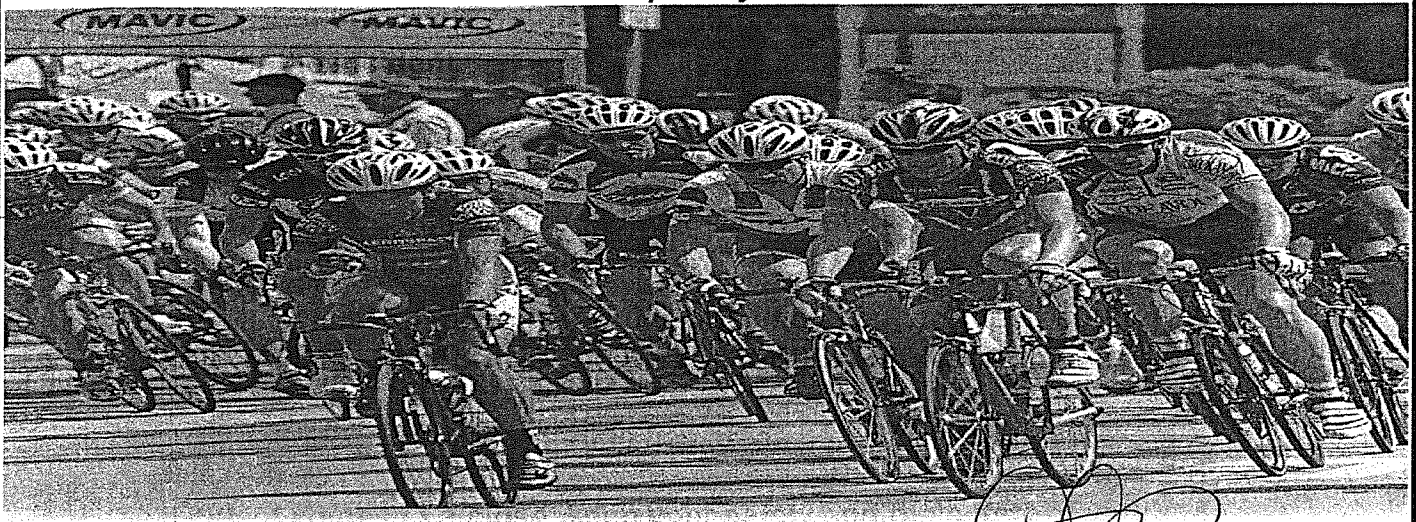
SAFETY MESSAGE

There are MANY Bicyclist on the roads surrounding the incident TODAY!!!!

- Exercise caution while driving on the incident and in surrounding communities. Drive slow, drive safe, watch for civilian traffic...
- Be careful around the incident base! Drive SLOW! Drive with CARE!
- Ensure radios are properly programmed and that crews are trained in communications procedures for the incident.
- Remain mindful of changing weather conditions; don't be caught off guard.
- Although there are cooler temps today- Stay hydrated!!! Time to think Water = time to drink. Document rest and hydration on 214.
- Stay aware of what is happening around you and adapt your exit strategy accordingly. ESTABLISH SAFETY ZONES AND KNOW YOUR ESCAPE ROUTE!

Watch your footing!! The entire fireline has areas of steep terrain...

- As the incident comes to a close, keep your safety and the safety of your crews as a top priority.





CAL FIRE Incident Management Team 6



UNIT/ACTIVITY LOG CS 215A	1. INCIDENT NAME: Grand Inc.	2. DATE PREPARED: May 17, 2013	3. TIME PREPARED: 05/17/2013 1500
--	--	--	---

4. PREPARED BY: Curtis Brown IMT6 SOF1 (T)	5. LEADER NAME: Gabriel Santos IMT6 SOF1	6. OPERATIONAL PERIOD: 05/18/13 0700 TO 05/19/13 0700	
--	--	---	--

INCIDENT RISK ANALYSIS - WILDLAND FIRES

DIVISION	HAZARDOUS ACTIONS / CONDITIONS	MITIGATIONS / WARNINGS / REMEDIES
ALL	DRIVING HAZARDS	Be alert for other drivers, civilians, & wildlife.
ALL	WEATHER	Base all action on current and expected fire behavior.
ALL	HYDRATION	Insure crews are hydrated and given rest breaks.
ALL	UNBURNED AREAS	Monitor current weather conditions and forecasts.
ALL	SNAG HAZARDS (Includes Utility Poles)	Maintain adequate escape routes & safety zones.

ALL	FATIGUE	Insure crews are hydrated and given rest breaks.
ALL	POISONOUS INSECTS/SNAKES	Identify, Flag, Avoid, & treat any bites or stings.
ALL	LINE CONSTRUCTION	Ensure LCES in place.
ALL	COMMUNICATIONS	Know the communications plan.
ALL	FIRE BEHAVIOR	Ensure LCES in place.

ALL R, X, Y, FS Repair	DRIVING HAZARDS UNDER SLUNG FIRE LINE PPE	Drive defensively! Headlights on. Ensure LCES in place. Use caution when working around heavy equipment
------------------------------	---	---

--	--	--

--	--	--

--	--	--

--	--	--

--	--	--



Demob Safety Message



Grand Fire

CA-LPF-001281

On Behalf of CAL FIRE Incident Management Team 6 we would like to thank you for your assistance. We wish you safe travels home or to your next assignment. Below are a few reminders to make your trip safer:

- ✓ Conduct walk around before driving
- ✓ Check for and secure all loose items (ie: tools, hose, and packs)
- ✓ Wear seat belts at all times
- ✓ Monitor all drivers for fatigue,
 - Switch drivers regularly if possible
 - If not find a safe place to stop, exit the vehicle and stretch a little
 - If all else fails, stop and take a short rest to revitalize.
- ✓ Obey Posted Speed Limits
- ✓ Ensure Personnel have adequate nutrition and hydration for the trip
- ✓ Be prepared to go to the next incident

Thank you again for your hard work!

Gabriel Santos SOF 1 IMT 6



INCIDENT Weather Forecast



FORECAST NO: 2

NAME OF FIRE: Grand Fire

PREDICTION FOR: 24 hr SHIFT

UNIT: LPF

SHIFT DATE: 5/18/13 (0700 – 0700)

SIGNED: Rich Thompson

TIME AND DATE

Incident Meteorologist

FORECAST ISSUED: 05/17/13 @ 2000

WEATHER DISCUSSION: Northwest winds will continue across the fire through the operational period. The winds will peak in strength tonight with gusts to around 50 MPH likely across the ridgetops and upper slopes. Drier and warmer air will move into the area today with afternoon humidity falling into the 20s to lower 30s with only moderate recoveries tonight.

For Sunday...the northwest winds will continue (although a bit weaker)...temperatures will rise and relative humidity will lower. On Monday...the flow will turn weakly northeast which will help make Monday the warmest and driest day of the next 7 days.

WEATHER FORECAST:

WEATHER: Mostly clear.

TEMPERATURES: Max: 64-72. Min: 45-52.

HUMIDITY: Min: 20-35%. Max: 45-65%.

20 FT WINDS:

RIDGETOP -
0600-1100: northwest to north 15-25 MPH Gust 35 MPH
1100-1900: west to northwest 10-20 MPH Gust 30 MPH
1900-0600: northwest to north 25-35 MPH Gust 50 MPH

SLOPE/VALLEY -
0600-1100: northwest to north 15-25 MPH Gust 35 MPH
1100-1900: west to northwest 5-15 MPH Gust 20 MPH
1900-0600: northwest to north 15-25 MPH Gust 40 MPH

OUTLOOK FOR SUNDAY AND SUNDAY NIGHT: Mostly clear. Max Temps:66-74. Min Temps: 48-54. Min RH: 15-25%. Max RH: 35-55%. Ridgetop Winds: northwest to north 15-25 MPH Gust 40 MPH becoming northeast 10-20 MPH Gust 30 MPH Sunday Night. Slope/Valley Winds: northwest to north 10-20 MPH Gust 30 MPH becoming northeast 10-20 MPH Gust 30 MPH Sunday Night.

EXTENDED FORECAST MONDAY THROUGH WEDNESDAY:

Monday: Clear. Max Temps: 80-90. Min Temps: 52-60. Min RH: 8-15%. Max RH: 25-40%. Ridgetop Winds: north to northeast 10-20 MPH Gust 35 MPH...becoming southwest to west 5-15 MPH Gust 25 MPH in the afternoon. Slope/Valley Winds: north to northeast 10-20 MPH Gust 30 MPH becoming upvalley 5-15 MPH Gust 25 MPH.

Tuesday: Clear. Max Temps: 76-86. Min Temps: 50-58. Min RH: 12-25%. Max RH: 35-50%. Ridgetop winds: west to northwest 10-20 MPH. Slope/Valley Winds: upvalley 5-15 MPH Gust 25 MPH daytime...downslope/downvalley 2-5 MPH nighttime.

Wednesday: Mostly clear. Max Temps: 70-80. Min Temps: 46-56. Min RH: 20-35%. Max RH: 45-60%. Ridgetop Winds: west to northwest 10-20 MPH. Slope/Valley Winds: upvalley 5-15 MPH Gust 25 MPH daytime...downslope/downvalley 2-5 MPH nighttime.

INCIDENT RADIO COMMUNICATIONS PLAN

Incident Name
Grand Incident

Date/Time Prepared
5/17/2013 1900hrs

Operational Period Date/Time
5/18/2013 0700 - 0700

Ch #	Function	Channel Name/Trunked Radio System Talkgroup	Assignment	RX Freq	N or W	RX Tone/NAC	TX Freq	N or W	Tx Tone/NAC	Mode A, D or M	Remarks
1	Command	NIFCC CMD 3	DIV. R,X,Y	168.0750	N		170.4250	N	107.2	A	tone 10
2	Command	NIFCC CMD 10	DIV. AZ, O	170.4125	N		165.9625	N	131.8	A	tone 3
3	Tactical	NIFCC TAC 1	DIV. AZ	168.0500	N		168.0500	N		A	
4	Tactical	NIFCC TAC 2	DIV. O	168.2000	N		168.2000	N		A	
5	Tactical	NIFCC TAC 3	DIV. R	168.6000	N		168.6000	N		A	
6	Tactical	NIFCC TAC 5	DIV. X	166.7250	N		166.7250	N		A	
7	Tactical	NIFCC TAC 6	DIV. Y	166.7750	N		166.7750	N		A	
8	Tactical	NITFC TAC 7	Supresion Repair	168.2500	N		168.2500	N		A	
9	Tactical	VFIRE 22	STAGING	154.2650	N		154.2650	N	156.7	A	
10	Tactical	VFIRE 23	UNASSIGNED	154.2950	N		154.2950	N	156.7	A	
11	Air to Ground	AG	All DIVISIONS	167.9500	N		167.9500	N			
12											
13	EMS	CALCORD	All DIVISIONS	156.0750	N		156.0750	N		A	EMS on Incident
14											
15											
16	Emergency	Air Guard	All DIVISIONS	168.6250	N		168.6250	N	110.9 (1)	A	EMERGENCIES ONLY
17											
18											
19											
20	Emergency	Air Guard	All DIVISIONS	168.6250	N		168.6250	N	110.9 (1)	A	EMERGENCIES ONLY

Prepared By (Communications Unit)
Tom Webb - COML

Incident Location
Kern County CA

The convention calls for frequency lists to show four digits after the decimal place, followed by either an "N" or a "W", depending on whether the frequency is narrow or wide band. Mode refers to either "A" or "D" indicating analog or digital (e.g. Project 25) or "M" indicating mixed mode. All channels are shown as if programmed in a control station, mobile or portable radio. Repeater and base stations must be programmed with the Rx and Tx reversed.

MEDICAL PLAN ICS 206	1. INCIDENT NAME GRAND	2. DATE PREPARED 5/17/2013	3. TIME PREPARED 1300	4. OPERATIONAL PERIOD 5/18/2013 0700-0700
---------------------------------------	----------------------------------	-------------------------------	--------------------------	--

5. INCIDENT MEDICAL AID STATIONS			
MEDICAL AID STATIONS	LOCATION		PARAMEDICS
Medical Unit	Base Camp		YES NO
			X

6. TRANSPORTATION			
A. AMBULANCE SERVICES			
NAME	LOCATION	PHONE	PARAMEDICS
			YES NO
Mercy Air 14	1220 Flight Line #60 Mojave, Ca 93501	(661) 824-2605	X
Hall Air Ambulance	1801 Sky Way Bakersfield, Ca 93308	(661) 327-4111	X
H407/H408 Kern County FD Bell 212HP Hoist and Night Capable	30356 Woodford-Tehachapi Road Keene, Ca 93268	(661) 822-5555	X
Hall Ambulance (GROUND)	3212 Mt Pinos Way Frazier Park, Ca 93225	(661) 327-4111	X

B. INCIDENT AMBULANCES			
NAME	LOCATION	PARAMEDICS	
		YES	NO
Hall Ambulance	3212 Mt Pinos Way Frazier Park, Ca 93225 Local Ambulance 2min ETA	X	

7. HOSPITALS								
NAME	ADDRESS	TRAVEL TIME		PHONE	HELIPAD		BURN CENTER	
		AIR	GRND		YES	NO	YES	NO
Med Net Channel								
Kern Medical Center Level 2 Trauma Center	1700 Mt Vernon Avenue, Bakersfield, Ca 93306	15min	40min	(661) 326-2667	X			X
Community Regional Medical Level 1 Trauma Center	2823 Fresno Street Fresno, Ca 93721	25min	1hr	(559) 459-4220	X		X	
San Joaquin Community Hospital Burn Center	2615 Chester Ave. Bakersfield, Ca 93301	15min	40min	(661) 253-8000	X		X	
Henry Mayo Newhall Memorial Hospital	23845 McBean Parkway Valencia, Ca 91355	10min	30min	(661) 253-8000	X			X
Ventura County Medical Center	3191 Loma Vista Ventura, Ca 93003	20min	45min	(805) 652-6000	X			X

8. MEDICAL EMERGENCY PROCEDURES	
<p>EMERGENCY FREQUENCY:</p> <p>LINE EMERGENCY: Crew Supervisor will contact Division Supervisor with patient complaint/condition and location.</p> <ul style="list-style-type: none"> Division/Group Supervisor contacts: <ol style="list-style-type: none"> Closest EMS resource Communications Unit Communications Unit contacts: <ol style="list-style-type: none"> Ground or Air ambulance as requested Operations Safety Medical Unit Division Supervisor or designee will serve as point of contact and run medical emergency on assigned channel. <ol style="list-style-type: none"> A pre-assigned tactical frequency (i.e. CALCORD) should be used for IWI and only for duration of need. Communications Unit will clear command channel for emergency traffic as needed and only for duration of need. <p>CAMP EMERGENCY: Contact Medical Unit with patient complaint/condition and location. Medical Staff will respond to stabilize incident:</p> <ul style="list-style-type: none"> Medical Unit contacts: <ol style="list-style-type: none"> Communications Safety Logistics Operations Crew Supervisor Comps/Claims 	<p>INJURY REPORTING PROCEDURES</p> <p>NATURE OF INJURY _____</p> <p>LOCATION OF PATIENT _____</p> <p>POINT OF CONTACT _____</p> <p>TRANSPORTATION REQUESTED BY: AIR ___ GROUND ___</p> <p>POINT OF PICKUP _____</p> <p>LAT _____ LONG _____</p> <p>PATIENT UNIT ID _____</p> <p>IS AN EMT WITH PATIENT: YES ___ NO ___</p> <p>AGE _____</p> <p>SEX: MALE ___ FEMALE ___</p> <p>ALL EMERGENCIES---Secure the area and identify witnesses for later investigation. Keep an accurate log of events.</p>

ICS 206 (Rev 03/12)	9. PREPARED BY: (Medical Unit Leader) Pablo Barriga / MEDL <i>PBB</i>	10. REVIEWED BY: (Safety Officer) Gabe Santos IMT6 SOF1 <i>Gabe Santos</i>
------------------------	--	---

GRAND FIRE
INCIDENT BASE CAMP PHONE LINES

COMMUNICATIONS UNIT

661 – 245 – 1974

SUPPLY / ORDERING TRAILER

661 – 245 – 1918

SUPPLY ORDERING FAX

661 – 245 - 1546

DEMOB TRAILER

661 – 245 – 1608

OPERATIONS TRAILER

661 – 245 – 1408

TIME UNIT

661 – 245 – 1484

FINANCE TRAILER

661 – 245 – 1983

FINANCE TRAILER

661 – 245 – 1532

TRAINING MESSAGE

**IF YOU KNOW THAT YOU ARE BEING
DEMOBED, PLEASE SEE ME ASAP
BEFORE TO CLOSE OUT YOUR
PAPERWORK.**

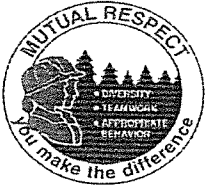
**Training is now (officially) located in the
PLANS trailer**

TRAINING NEEDS TO SEE THE FOLLOWING PEOPLE

No, you are not in trouble.....yet.

Ryan Ferris, SQF

Scott Alderete, SBC



Human Resource Message

Los Padres National Forest

Human Resource Specialists are assigned to an incident for you. We're here to help promote a positive work environment as well as assist you with any issues that you may have. Please let me know if there is anything I can help you with.

MUTAL RESPECT.....
YOU
MAKE THE DIFFERENCE !

Cyndie Genzmer
Human Resource Specialist
805.550.0274

**Grand Fire
CA-LPF-001281
Fire Suppression Repair Plan**

May 18, 2013

General:

- Repair fences damaged resulting from fire suppression activities.
- Remove berms and barriers created by the fire control access.
- Note and advise Logistics of all litter drops.
- Report any damages or needs to the ICP, Fire Suppression Repair Specialist or Situation Unit Leader.

Staging Areas / Safety Zones:

- New Construction: cross drain and abandon (if applicable).
- Existing: Repair to original condition, remove debris resulting from use.

Roads:

- Grade to original prism where necessary.
- Clean culverts plugged with soil resulting from fire road use.
- Breach/remove berms to facilitate drainage.

Firelines:

- Install waterbreaks on all constructed or used dozer lines using the following criteria:

Slope	0-10	11-25	26-50	>50
Dozer line	100'	75'	50'	50'
Road	200'	150'	100'	75'

Handlines:

- Handlines shall be waterbarred as determined by Division Supervisor.

(all waterbreaks should be installed diagonally with a minimum cut of 6" into existing grade, and minimum height of 18". Waterbreaks shall be installed at all watercourse crossings. Waterbreaks shall be constructed to allow for drainage at the discharge end into non-erodible material.

Watercourses:

- All slash, soil, and debris deposited into watercourses resulting from fire suppression activities shall be removed and stabilized.
- Major watercourse damage, if present shall be reported to the Suppression Repair Unit.
- Where fire lines are constructed within 100' of running watercourses, straw or mulching will be conducted. All loose soil must be pulled away from the watercourse and stabilized.

Slash piles

- Piles within 150' of permanent structures or public roads will be lopped and/or scattered within 18" of soil surface.
- Piles outside the 150' fire safe zone shall be retained for wildlife cover.

Archaeological or Historic Sites (if discovered):

- All potential sites shall be avoided.
- Impacted sites will be reported to the Rehabilitation Unit Leader as soon as possible.
- If sites are encroached upon, work will stop immediately if there is no threat of fire spread, and the Division/Group Supervisor shall be notified.



**Grand Incident
Demobilization
13-CA-LPF-001281
May 18, 2013**

Supervisory personnel are to identify resources excess to the needs of the incident at the earliest opportunity. If possible, this should be done in advance of a proposed release by filling out a General Message Form (ICS 213) or Declaration of Excess Resource Sheet. Please include name, request number, date, ETD, ETA, and if available for reassignment. By definition, surplus personnel are available if they have met the 2:1 work rest requirements, have rested for a minimum of 8 hours.

Section Chiefs will approve all excess resource lists and the lists will be forwarded to the Resource Unit for processing. Operational resource excess lists shall be prepared by the Planning Section and approved by the Planning Section Chief.

The release priorities are:

- Organized fire departments
- OES engines
- Federal Military forces
- National Guard
- Hired personnel and equipment
- Out of region CAL FIRE forces
- EFF Crews
- Cooperating Agencies – USFS, BLM, etc.
- Within Region CAL FIRE Forces
- Unit CAL FIRE Forces / Local LPF Resources

The needs of the incident and off-incident issues may necessitate the modification of these priorities in certain cases.

Information concerning surplus resources will be forwarded to the Los Padres expanded dispatch by the Demobilization Unit (with ECC Support Team at incident). This information will include the resource name, request number, ETD, and ETA. Additionally, the availability of the resource for a new assignment will be provided.

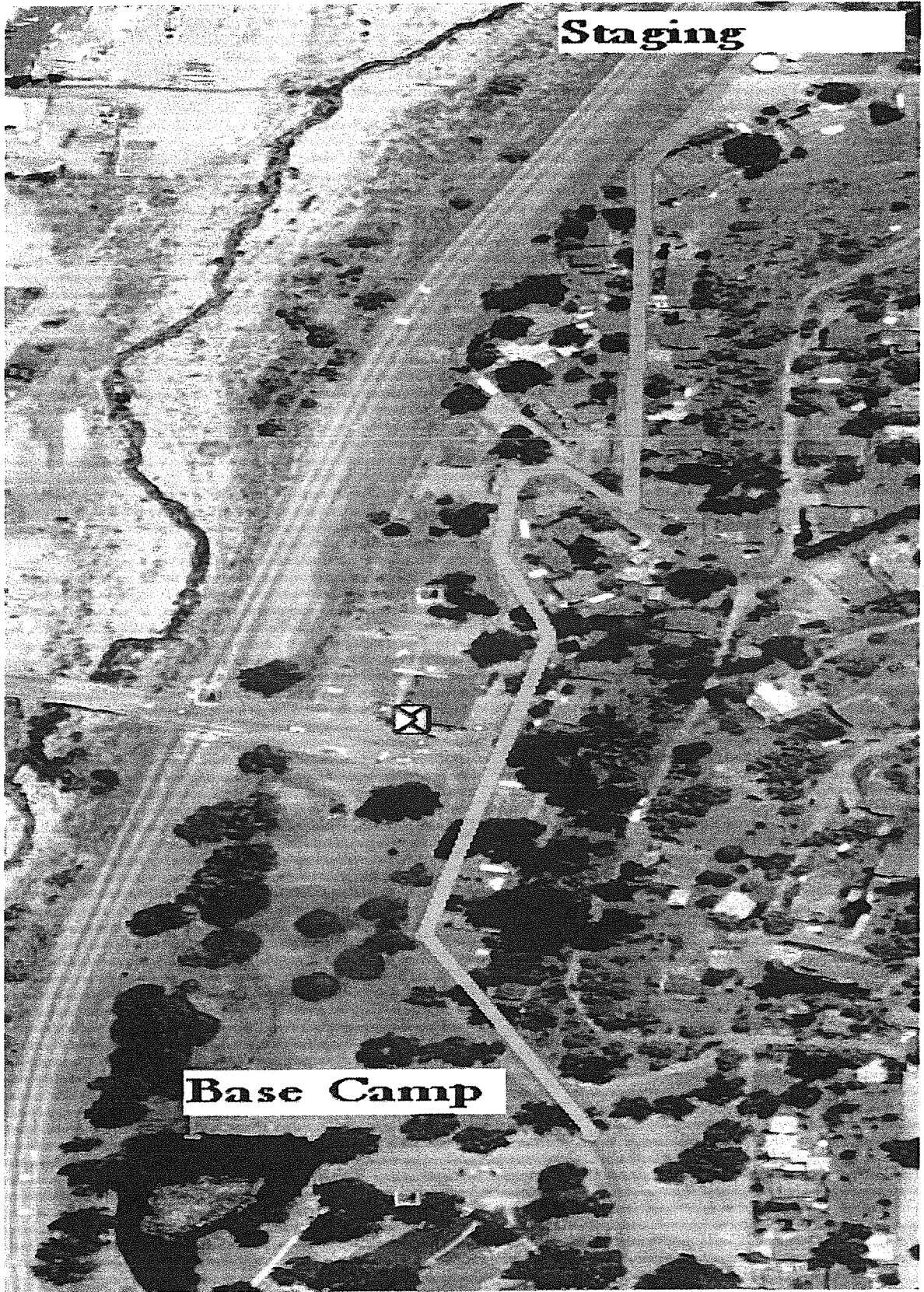
- A. All government vehicles and hired equipment must be safety inspected prior to release. Safety inspections shall be coordinated with the Ground Support Unit Leader. All deficiencies will be corrected prior to departure for home unless agency head signs a waiver of inspection.

Surplus resources lists will be posted within the ICP and at the Demobilization Unit with a schedule for resources to pick up the checkout form (ICS 221) at the Demobilization Unit to begin the checkout process. Finance will be the final stop prior to returning to the Demobilization Unit. All resources must complete the demobilization process. Once the ICS 221 has been completed and returned in to the Demobilization Unit, the resource will be released from the incident to home, re-assigned to another incident, or held as directed by Southern Region Operations Center (South-Ops).

All Resources will meet any agency-specific and/or DMV rest requirements before demobilizing from the incident. The operator must be rested prior to driving. A resource encountering a delay en route will contact the appropriate home unit or incident.

EMERGENCY SHIFT TICKET and EVALUATION FORM The responsible Government Officer will complete this form each shift						Contractor Name H2O For You	
Incident or Project Name Wild		Incident Number CALNU001234		Request Number E-65		Operator #1 James Russell	Operator #2
Agreement Number LNU0111119						Operator Furnished By: <input checked="" type="checkbox"/> Contractor <input type="checkbox"/> Government	
Equipment Make Peterbilt		Equipment Model / Type 2000 Gallon				Operating Supplies Furnished By: <input checked="" type="checkbox"/> Contractor <input type="checkbox"/> Government	
Serial Number 111454N		License Number 3653574				Equipment Status <input checked="" type="checkbox"/> Inspected <input checked="" type="checkbox"/> Under Agreement	
Equipment Use						<input type="checkbox"/> Released by Government <input type="checkbox"/> Withdrawn by Contractor	
Date		Start		Stop		(Circle) Hours / Days / Miles	
Mo / Day				Work	Assignment		
7/3	0600	0800	2		Travel In		
7/3	0800	2000	12		Div X		
7/3	2000	2400	4		off shift		
Vendor Rating						Govt. Rep. Name and Position - PRINT Steve Knox Div X	
Met Performance Expectations		Poor*	Avg.	Good	Exc.	N/A	
Equipment in Safe Working Condition					<input checked="" type="checkbox"/>		
Operator Skill Level				<input checked="" type="checkbox"/>	<input checked="" type="checkbox"/>		
Operates Safely				<input checked="" type="checkbox"/>			
Operator's Cooperation Level					<input checked="" type="checkbox"/>		
Overall Performance					<input checked="" type="checkbox"/>		
Govt. Rep. Signature Steve Knox						Contractor Signature James Russell	
Date 7-3-12						Time 2000	
* NOTE: Any rating of POOR requires an explanation in Comment Section. **Final evaluation or for more documentation, use an ICS Form 230 or equivalent.						CAL FIRE 297 (Rev 3-2011)	
Pink - Finance		Blue - Home Unit HE Coordinator		Yellow - Vendor		White - Govt Representative	

EMERGENCY SHIFT TICKET and EVALUATION FORM The responsible Government Officer will complete this form each shift						Contractor Name Fireline Builders	
Incident or Project Name Wild		Incident Number CALNU001234		Request Number E-59		Operator #1 Jim Smith	Operator #2 John Jones
Agreement Number LNU01234567						Operator Furnished By: <input checked="" type="checkbox"/> Contractor <input type="checkbox"/> Government	
Equipment Make CAT		Equipment Model / Type Dozer D6H				Operating Supplies Furnished By: <input checked="" type="checkbox"/> Contractor <input type="checkbox"/> Government	
Serial Number 6LN3344		License Number				Equipment Status <input checked="" type="checkbox"/> Inspected <input checked="" type="checkbox"/> Under Agreement	
Equipment Use						<input type="checkbox"/> Released by Government <input type="checkbox"/> Withdrawn by Contractor	
Date		Start		Stop		(Circle) Hours / Days / Miles	
Mo / Day				Work	Assignment		
7/3	0200	0400	2		Travel In		
7/3	0400	1400	10		DIV A		
7/3	1400	2400	10		DIV Z		
Vendor Rating						Govt. Rep. Name and Position - PRINT Mike Brown Div A/Z	
Met Performance Expectations		Poor*	Avg.	Good	Exc.	N/A	
Equipment in Safe Working Condition				<input checked="" type="checkbox"/>	<input checked="" type="checkbox"/>		
Operator Skill Level				<input checked="" type="checkbox"/>			
Operates Safely				<input checked="" type="checkbox"/>			
Operator's Cooperation Level					<input checked="" type="checkbox"/>		
Overall Performance				<input checked="" type="checkbox"/>			
Govt. Rep. Signature Mike Brown						Contractor Signature Jim Smith	
Date 7-3-12						Time 2400	
* NOTE: Any rating of POOR requires an explanation in Comment Section. **Final evaluation or for more documentation, use an ICS Form 230 or equivalent.						CAL FIRE 297 (Rev 3-2011)	
Pink - Finance		Blue - Home Unit HE Coordinator		Yellow - Vendor		White - Govt Representative	



Foot Travel Route From Staging to Base Camp = .4 miles

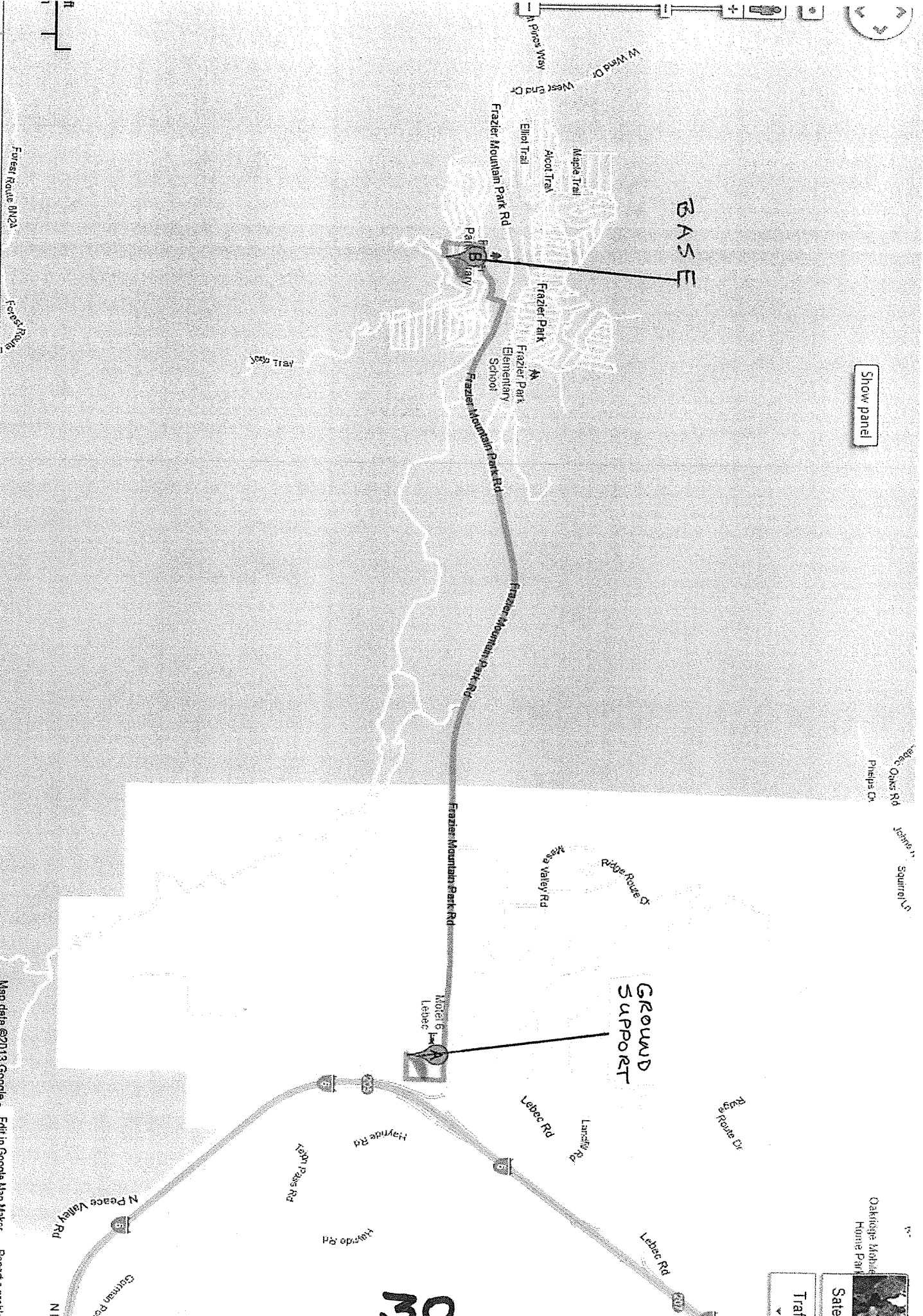


Show panel

BASE

GROUND SUPPORT

ON



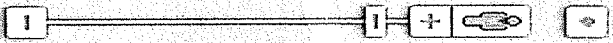
Map data ©2013 Google - Edit in Google Map Maker Report a problem

100%

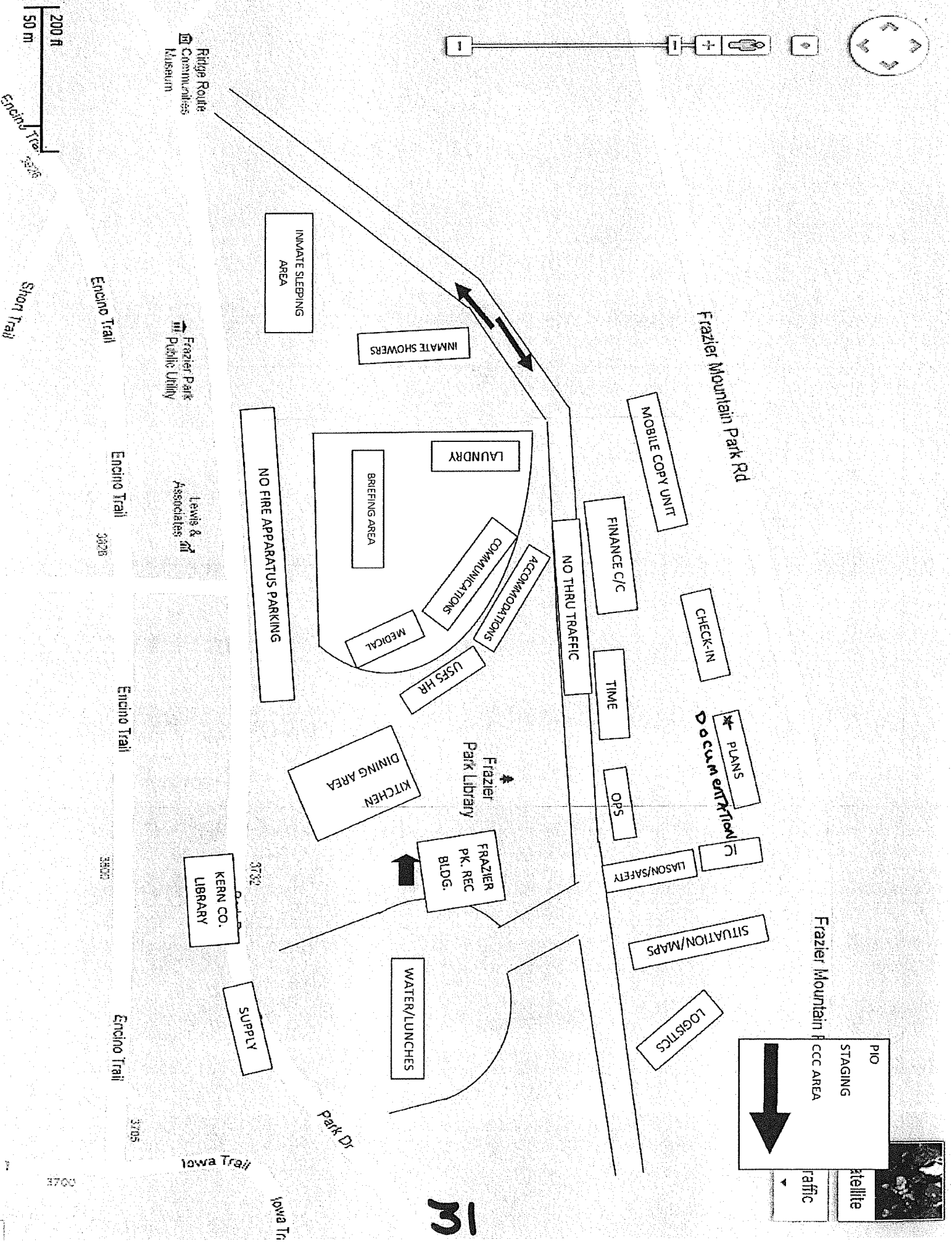
6:32 P 5/17/20

Satellite

Traffic



PIO
 STAGING
 CCC AREA
 Traffic
 Satellite



13

