

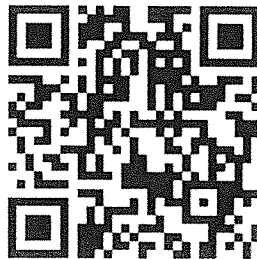
# **Grand Fire**

**CALPF 001281**

**P5HG1V**

# **IAP**

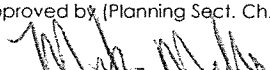
**05/19/13**  
**OPERATIONAL PERIOD**  
**0700 to 0700**



<b>INCIDENT OBJECTIVES</b>	1. Incident Name GRAND FIRE CA-LPF-001281	2. Date May 18, 2013	3. Time 2300									
4. Operational Period 0700 05/19/2013 to 0700 05/20/2013												
5. General Control Objectives for the Incident (include alternatives) <u>Management Objectives:</u> <ul style="list-style-type: none"> <li>• Provide for Firefighter and Public Safety</li> <li>• Protect Structures and Provide Structure Defense</li> <li>• Protect Infrastructure Assets Including: Edison's 500 KV Lines, Interstate 5 and Frazier Mountain Communications site</li> <li>• Coordinate Control Evacuations and Road Closures</li> <li>• Coordinate Suppression Activities on National Forest and State Park Lands through Resource Advisors</li> <li>• Protect Cultural Resources and Oak Woodland Reserve</li> <li>• Keep Costs Commensurate with Values at Risk</li> </ul> <u>Control Objectives:</u> <ul style="list-style-type: none"> <li>• Keep Fire South of Frazier Mountain Park Road</li> <li>• Keep Fire North of Gold Hill Road</li> <li>• Keep Fire West of I-5</li> <li>• Keep Fire East of Frazier Mountain Road</li> </ul>												
6. Weather Forecast for Period  See attached weather forecast												
7. General Safety Message  See attached safety message.												
8. Attachments (mark if attached) <table border="0" style="width: 100%;"> <tr> <td><input checked="" type="checkbox"/> Organization List - ICS 203</td> <td><input checked="" type="checkbox"/> Medical Plan - ICS 206</td> <td><input checked="" type="checkbox"/> Incident Base Map</td> </tr> <tr> <td><input checked="" type="checkbox"/> Div. Assignment Lists - ICS 204</td> <td><input checked="" type="checkbox"/> Incident Map</td> <td><input checked="" type="checkbox"/> Safety Message/ LCES Worksheet</td> </tr> <tr> <td><input checked="" type="checkbox"/> Communications Plan - ICS 205</td> <td><input checked="" type="checkbox"/> Traffic Plan</td> <td><input checked="" type="checkbox"/> Weather Forecast</td> </tr> </table>				<input checked="" type="checkbox"/> Organization List - ICS 203	<input checked="" type="checkbox"/> Medical Plan - ICS 206	<input checked="" type="checkbox"/> Incident Base Map	<input checked="" type="checkbox"/> Div. Assignment Lists - ICS 204	<input checked="" type="checkbox"/> Incident Map	<input checked="" type="checkbox"/> Safety Message/ LCES Worksheet	<input checked="" type="checkbox"/> Communications Plan - ICS 205	<input checked="" type="checkbox"/> Traffic Plan	<input checked="" type="checkbox"/> Weather Forecast
<input checked="" type="checkbox"/> Organization List - ICS 203	<input checked="" type="checkbox"/> Medical Plan - ICS 206	<input checked="" type="checkbox"/> Incident Base Map										
<input checked="" type="checkbox"/> Div. Assignment Lists - ICS 204	<input checked="" type="checkbox"/> Incident Map	<input checked="" type="checkbox"/> Safety Message/ LCES Worksheet										
<input checked="" type="checkbox"/> Communications Plan - ICS 205	<input checked="" type="checkbox"/> Traffic Plan	<input checked="" type="checkbox"/> Weather Forecast										
9. Prepared by (Planning Section Chief) <i>Mike Mills</i>	10. Approved by (Incident Commander)											

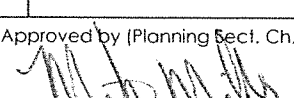




<b>DIVISION ASSIGNMENT LIST</b>			1. Branch		2. Division/Group <b>R</b>		
3. Incident Name <b>GRAND</b>			4. Operational Period Date: <b>05/19-20/13</b> Time: <b>0700-0700</b>				
5. Operations Personnel							
Operations Chief		<b>Rodriguez/Biermann/ VanLobenSels</b>		Division/Group Supervisor		<b>Nic Elmquist</b>	
Branch Director				Air Attack Supervisor No.			
6. Resources Assigned this Period							
Strike Team/Task Force/ Resource Designator	Leader	Number Persons	Trans. Needed	Drop Off PT./Time	Pick Up PT./Time		
<b>** STC ANF 1604C</b>	<b>KURT YEAROUT</b>	<b>23</b>	<b>N</b>	<b>0700</b>	<b>0700</b>		
<b>STC RRU 9310C</b>	<b>SEAN DAKIN</b>	<b>16</b>	<b>N</b>	<b>0700</b>	<b>1900</b>		
<b>CRW CND KERN VALLEY IHC</b>	<b>LEIF MATHIESEN</b>	<b>21</b>	<b>N</b>	<b>0700</b>	<b>1900</b>		
<b>CRW HTF BLACK MOUNTAIN IHC</b>	<b>MATT HOGGARD</b>	<b>19</b>	<b>N</b>	<b>0700</b>	<b>1900</b>		
<b>W/T PVT A1</b>	<b>ANDREW KING</b>	<b>2</b>	<b>N</b>	<b>0700</b>	<b>1900</b>		
<b>W/T PVT AQUA</b>	<b>ROBERT WRIGHT</b>	<b>2</b>	<b>N</b>	<b>0700</b>	<b>1900</b>		
<b>W/T ANF</b>	<b>PABLO ARRIAGA</b>	<b>2</b>	<b>N</b>	<b>0700</b>	<b>1900</b>		
<b>W/T PVT LA THOMPSON</b>	<b>COREY THOMPSON</b>	<b>2</b>	<b>N</b>	<b>0700</b>	<b>1900</b>		
<b>SOFR</b>	<b>DAVE BAKER</b>	<b>1</b>	<b>N</b>	<b>0700</b>	<b>1900</b>		
7. Control Operations <b>MOPUP 300' INTO BURN BACKHAUL TRASH REMOVE HOSE AS NEEDED</b>							
8. Special Instructions <b>CONDOR HABITAT- ALL TRASH MUST BE REMOVED FROM THE FIRE LINE AND DROP POINTS DAILY TO PROTECT CONDORS PROTECT CULTURAL RESOURCES IN THE AREA, IDENTIFIED WITH BLUE, OR BLACK AND PINK, OR BLACK AND YELLOW FLAGGING</b>							
9. Division/Group Communication Summary							
Function	Frequency	System	Channel	Function	Frequency	System	Channel
Command	<b>RX 168.0750 TX 170.4250</b>		<b>NIFC CMD 3 TONE 10</b>	Air to Ground	<b>RX/TX 167.9500</b>		
Tactical Div/Group	<b>RX/TX 168.6000</b>		<b>NIFC TAC 3</b>	Air Guard	<b>RX/TX 168.6250</b>		
Prepared by (Resource Unit Ldr.) Justin Wilson		Approved by (Planning Sect. Ch.) 			Date 05/18/13		2300

<b>DIVISION ASSIGNMENT LIST</b>		1. Branch		2. Division/Group <b>X</b>			
3. Incident Name <b>GRAND</b>		4. Operational Period Date: <b>05/19-20/13</b> Time: <b>0700-0700</b>					
5. Operations Personnel							
Operations Chief <b>Rodriguez/Biermann/ VanLobenSels</b>		Division/Group Supervisor		Roger Raines, Todd Leake (t) Night/ David Nicolson			
Branch Director		Air Attack Supervisor No.					
6. Resources Assigned this Period							
Strike Team/Task Force/ Resource Designator	Leader	Number Persons	Trans. Needed	Drop Off PT./Time	Pick Up PT./Time		
<b>** STC TUU 9410C</b>	<b>LARRY HARRIS</b>	<b>16</b>	<b>N</b>	<b>0700</b>	<b>0700</b>		
<b>CREWLPF ARROYO GRANDE IHC</b>	<b>MICHAEL HICKEY</b>	<b>18</b>	<b>N</b>	<b>0700</b>	<b>1900</b>		
<b>CRW SQF SPRINGVILLE IHC</b>	<b>JEREMY BUSH</b>	<b>19</b>	<b>N</b>	<b>0700</b>	<b>1900</b>		
<b>W/T BDF 12</b>	<b>JOSHUA RABORN</b>	<b>1</b>	<b>N</b>	<b>0700</b>	<b>1900</b>		
<b>FOBS DAY</b>	<b>DAVID NICOLSON</b>	<b>11</b>	<b>N</b>	<b>0700</b>	<b>1900</b>		
<b>MED TEAM 1</b>	<b>RALPHGLADWIN/ DANIEL TESSIER</b>	<b>2</b>	<b>N</b>	<b>0700</b>	<b>1900</b>		
<b>SOFR</b>	<b>RICHARD GEARHART</b>	<b>1</b>	<b>N</b>	<b>0700</b>	<b>1900</b>		
7. Control Operations <b>MOPUP 300' INTO BURN BACKHAUL TRASH REMOVE HOSE AS NEEDED</b>							
8. Special Instructions <b>CONDOR HABITAT- ALL TRASH MUST BE REMOVED FROM THE FIRE LINE AND DROP POINTS DAILY TO PROTECT CONDORS PROTECT CULTURAL RESOURCES IN THE AREA, IDENTIFIED WITH BLUE, OR BLACK AND PINK, OR BLACK AND YELLOW FLAGGING</b>							
9. Division/Group Communication Summary							
Function	Frequency	System	Channel	Function	Frequency	System	Channel
Command	<b>RX 168.0750 TX 170.4250</b>		<b>NIFC CMD 3 TONE 10</b>	Air to Ground	<b>RX/TX 167.9500</b>		
Tactical Div/Group	<b>RX/TX 166.7250</b>		<b>NIFC TAC 5</b>	Air Guard	<b>RX/TX 168.6250</b>		
Prepared by (Resource Unit Ldr.) Justin Wilson		Approved by (Planning Sect. Ch.) <i>Mark Malt</i>			Date 05/18/13		2300

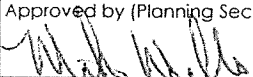
**6**

<b>DIVISION ASSIGNMENT LIST</b>			1. Branch		2. Division/Group <b>Y</b>			
3. Incident Name <b>GRAND</b>			4. Operational Period Date: <b>05/19-20/13</b> Time: <b>0700-0700</b>					
5. Operations Personnel								
Operations Chief		<b>Rodriguez/Biermann/ VanLobenSels</b>		Division/Group Supervisor		<b>Phil Hernandez, Anthony Zavalla</b>		
Branch Director				Air Attack Supervisor No.				
6. Resources Assigned this Period								
Strike Team/Task Force/ Resource Designator	Leader		Number Persons	Trans. Needed	Drop Off PT./Time		Pick Up PT./Time	
<b>ENG LPF ENG 72</b>	<b>RYAN BRIDGEN</b>		<b>5</b>	<b>N</b>	<b>0700</b>		<b>1900</b>	
<b>CRW LPF LOS PADRES REGULARS</b>	<b>CHRISTOPHER WOOD</b>		<b>18</b>	<b>N</b>	<b>0700</b>		<b>1900</b>	
<b>CRW SQF HORSESHOE</b>	<b>JOSE GONZALES</b>		<b>18</b>	<b>N</b>	<b>0700</b>		<b>1900</b>	
<b>STG RRU 9390G</b>	<b>DAVID LORD</b>		<b>29</b>	<b>N</b>	<b>0700</b>		<b>1900</b>	
<b>STG RRU 9374G</b>	<b>JACK FRANKLIN</b>		<b>30</b>	<b>N</b>	<b>0700</b>		<b>1900</b>	
7. Control Operations <b>MOPUP 300' INTO BURN BACKHAUL TRASH REMOVE HOSE AS NEEDED</b>								
8. Special Instructions <b>CONDOR HABITAT- ALL TRASH MUST BE REMOVED FROM THE FIRE LINE AND DROP POINTS DAILY TO PROTECT CONDORS.</b>								
9. Division/Group Communication Summary								
Function	Frequency	System	Channel		Function	Frequency	System	Channel
Command	<b>RX 168.0750 TX 170.4250</b>		<b>NIFC CMD 3 TONE 10</b>		Air to Ground	<b>RX/TX 167.9500</b>		
Tactical Div/Group	<b>RX/TX 166.7750</b>		<b>NIFC TAC6</b>		Air Guard	<b>RX/TX 168.6250</b>		
Prepared by (Resource Unit Ldr.) Justin Wilson			Approved by (Planning Sect. Ch.) 			Date 05/18/13		2300



<b>DIVISION ASSIGNMENT LIST</b>			1. Branch		2. Division/Group <b>FIRE SURPPRESSION AND REPAIR</b>			
3. Incident Name  <b>GRAND</b>			4. Operational Period Date: <b>05/19-20/13</b> Time: <b>0700-0700</b>					
5. Operations Personnel								
Operations Chief		<b>Rodriguez/Biermann/ VanLobenSels</b>		BURNED AREA RESPONSE SPEC.		<b>DAVID SHY</b>		
Branch Director				Air Attack Supervisor No.				
6. Resources Assigned this Period								
Strike Team/Task Force/ Resource Designator	Leader		Number Persons	Trans. Needed	Drop Off PT./Time		Pick Up PT./Time	
<b>CRW ANF FUEGO RANGERS</b>	<b>HECTOR SANCHEZ</b>		<b>20</b>	<b>N</b>	<b>0700</b>		<b>1900</b>	
<b>CRW CNF DESCANSO</b>	<b>MARTIE HALE</b>		<b>23</b>	<b>N</b>	<b>0700</b>		<b>1900</b>	
<b>STG SLU 9394G</b>	<b>JEFF ELMORE</b>		<b>38</b>	<b>N</b>	<b>0700</b>		<b>1900</b>	
<b>STG TUU 9473G</b>	<b>FRANKIE VILLANI</b>		<b>31</b>	<b>N</b>	<b>0700</b>		<b>1900</b>	
<b>STG TUU 9472G</b>	<b>JACK THOMPSON</b>		<b>27</b>	<b>N</b>	<b>0700</b>		<b>1900</b>	
<b>STG SLU 9397G</b>	<b>TIMOTHY DAVIS</b>		<b>32</b>	<b>N</b>	<b>0700</b>		<b>1900</b>	
<b>W/T PVT MDE</b>	<b>GREG ZAVALA</b>		<b>2</b>	<b>N</b>	<b>0700</b>		<b>1900</b>	
<b>W/T PVT ALONSO</b>	<b>KEVIN WILSON</b>		<b>2</b>	<b>N</b>	<b>0700</b>		<b>1900</b>	
<b>W/T PVT MDE</b>	<b>KEVIN OCCONNELL</b>		<b>2</b>	<b>N</b>	<b>0700</b>		<b>1900</b>	
<b>W/T PVT S. BENNET</b>	<b>JONATHON ZAVALA</b>		<b>2</b>	<b>N</b>	<b>0700</b>		<b>1900</b>	
<b>DOZ ANF 3</b>	<b>CHARLIE FERRIS</b>		<b>2</b>	<b>N</b>	<b>0700</b>		<b>1900</b>	
<b>DOZ LPF 4</b>	<b>AARON PENTON</b>		<b>2</b>	<b>N</b>	<b>0700</b>		<b>1900</b>	
7. Control Operations <b>IMPLEMENT FIRE SUPPRESSION REPAIR PLAN</b>								
8. Special Instructions								
9. Division/Group Communication Summary								
Function	Frequency	System	Channel		Function	Frequency	System	Channel
Command					Air to Ground			
Tactical Div/Group	<b>RX/TX</b> <b>168.2500</b>		<b>NIFC TAC7</b>		Air Guard			
Prepared by (Resource Unit Ldr.) Justin Wilson			Approved by (Planning Sect. Ch.) <i>Justin Wilson</i>			Date <b>05/18/13</b>		2300



<b>DIVISION ASSIGNMENT LIST</b>		1. Branch		2. Division/Group <b>FIRE SUPPRESSION AND REPAIR (CONT)</b>			
3. Incident Name <b>GRAND</b>		4. Operational Period Date: <b>05/19-20/13</b> Time: <b>0700-0700</b>					
5. Operations Personnel							
Operations Chief	<b>Rodriguez/Biermann/ VanLobenSels</b>		BURNED AREA RESPONSE SPEC.		<b>DAVID SHY</b>		
Branch Director			Air Attack Supervisor No.				
6. Resources Assigned this Period							
Strike Team/Task Force/ Resource Designator	Leader	Number Persons	Trans. Needed	Drop Off PT./Time	Pick Up PT./Time		
<b>TFLD</b>	<b>MATTHEW CONKLIN</b>	<b>1</b>	<b>N</b>	<b>0700</b>	<b>1900</b>		
<b>GRADER PVT</b>	<b>TATE NAGLE</b>	<b>1</b>	<b>N</b>	<b>0700</b>	<b>1900</b>		
<b>READ</b>	<b>MELODY FOUNTAIN</b>	<b>1</b>	<b>N</b>	<b>0700</b>	<b>1900</b>		
<b>READ</b>	<b>GREG THOMPSON</b>	<b>1</b>	<b>N</b>	<b>0700</b>	<b>1900</b>		
<b>FOBS</b>	<b>DAMIAN GUILLIANI</b>	<b>1</b>	<b>N</b>	<b>0700</b>	<b>1900</b>		
<b>FOBS</b>	<b>JOHN HUECKER</b>	<b>1</b>	<b>N</b>	<b>0700</b>	<b>1900</b>		
<b>FOBS</b>	<b>GUY ANDERSON</b>	<b>1</b>	<b>N</b>	<b>0700</b>	<b>1900</b>		
<b>FOBS</b>	<b>CHIRS BRENZEL</b>	<b>1</b>	<b>N</b>	<b>0700</b>	<b>1900</b>		
<b>FOBS (t)</b>	<b>LEE WALDRON</b>	<b>1</b>	<b>N</b>	<b>0700</b>	<b>1900</b>		
7. Control Operations <b>IMPLEMENT FIRE SUPPRESSION REPAIR PLAN</b>							
8. Special Instructions							
9. Division/Group Communication Summary							
Function	Frequency	System	Channel	Function	Frequency	System	Channel
Command				Air to Ground			
Tactical Div/Group	<b>RX/TX 168.2500</b>		<b>NIFC TAC7</b>	Air Guard			
Prepared by (Resource Unit Ldr.) Justin Wilson		Approved by (Planning Sect. Ch.) 		Date 05/18/13		2300	

9

DIVISION ASSIGNMENT LIST			1. Branch		2. Division/Group <b>STAGING</b>			
3. Incident Name <b>GRAND</b>			4. Operational Period Date: <b>05/19-20/13</b> Time: <b>0700-0700</b>					
5. Operations Personnel								
Operations Chief		<b>Rodriguez/Biermann/ VanLobenSels</b>		Staging Area Manager		<b>Josh Potter</b>		
Branch Director				Air Attack Supervisor No.				
6. Resources Assigned this Period								
Strike Team/Task Force/ Resource Designator	Leader		Number Persons	Trans. Needed	Drop Off PT./Time		Pick Up PT./Time	
<b>STC BEU 9460C</b>	<b>FRANK ROYOS</b>		<b>16</b>	<b>N</b>	<b>0700</b>		<b>0700</b>	
<b>STC CNF 6631C</b>	<b>JOEL MORTIER</b>		<b>27</b>	<b>N</b>	<b>0700</b>		<b>0700</b>	
<b>CRW ENF ELDORADO IHC</b>	<b>WILLIAM HARRIS</b>		<b>18</b>	<b>N</b>	<b>0700</b>		<b>0700</b>	
<b>CRW MNF ELK MT IHC</b>	<b>CHEVEYO MUNK</b>		<b>20</b>	<b>N</b>	<b>0700</b>		<b>0700</b>	
<b>CRW KRN CREW 81</b>	<b>CASEY PAYNE</b>		<b>18</b>	<b>N</b>	<b>0700</b>		<b>0700</b>	
<b>CRW BDF TAHQUITZ</b>	<b>BRYAN SCOTT</b>		<b>19</b>	<b>N</b>	<b>0700</b>		<b>0700</b>	
<b>CRW SQF BLACK EAGLES 2</b>	<b>GUSTAVO SANTOYO- GALLEGOS</b>		<b>23</b>	<b>N</b>	<b>0700</b>		<b>0700</b>	
<b>CRW SQF SCORPIONS 2</b>	<b>GUSTAVO SANTOYO- GALLEGOS</b>		<b>22</b>	<b>N</b>	<b>0700</b>		<b>0700</b>	
<b>STG BDU 9370G</b>	<b>PETER SCHOENDIENST</b>		<b>30</b>	<b>N</b>	<b>0700</b>		<b>0700</b>	
<b>STG BDU 9389G</b>	<b>MATT EDMISTON</b>		<b>31</b>	<b>N</b>	<b>0700</b>		<b>0700</b>	
7. Control Operations								
8. Special Instructions <b>MAINTAIN READINESS WITH ASSIGNED RESOURCES</b>								
9. Division/Group Communication Summary								
Function	Frequency	System	Channel		Function	Frequency	System	Channel
Command	<b>RX 168.0750 TX 170.4250</b>		<b>NIFC CMD 3 TONE 10</b>		Air to Ground			
Tactical Div/Group	<b>RX/TX 154.2650</b>		<b>VFIRE 22</b>		Air Guard			
Prepared by (Resource Unit Ldr.) Justin Wilson			Approved by (Planning Sect. Ch.) <i>Mike Mills</i>			Date 05/18/13		2300







# CAL FIRE INCIDENT MANAGEMENT TEAM 6



<b>SAFETY MESSAGE</b>	<b>1. INCIDENT NAME:</b> GRAND	<b>2. DATE PREPARED:</b> May 18, 2013	<b>3. TIME PREPARED:</b> 1400
<b>4. PREPARED BY:</b> Curtis Brown IMT6 SOF1(T)	<b>5. LEADER NAME:</b> Gabriel Santos IMT6 SOF1	<b>6. OPERATIONAL PERIOD:</b> 0700 TO 0700	

# SAFETY MESSAGE

**LESS FIRE TO FIGHT MEANS: MORE TIME TO FOCUS ON SAFETY!!!**

- As the incident comes to a close, keep your safety and the safety of your crews as a top priority.
- Be careful around the incident base! Drive SLOW! Drive with CARE!
- Ensure radios are properly programmed and that crews are trained in communications procedures for the incident.
- Remain mindful of changing weather conditions; don't be caught off guard with the WINDY conditions.
- Stay hydrated!!! Time to think Water = time to drink. Document rest and hydration on 214.
- There's no glory in getting hurt during mop up, keep your safety and the safety of your crews as a top priority.
- Remain mindful of what is going on around you and adapt your exit strategy accordingly.
- Even though the incident is now small keep safety a BIG priority all the time.



18. TAKING A NAP NEAR THE FIRELINE



# CAL FIRE Incident Management Team 6



<b>UNIT/ACTIVITY LOG</b> CS 215A	<b>1. INCIDENT NAME:</b> Grand	<b>2. DATE PREPARED:</b> May 18, 2013	<b>3. TIME PREPARED:</b> 1500
-------------------------------------	-----------------------------------	--	----------------------------------

<b>4. PREPARED BY:</b> Curtis Brown IMT6 SOF1 (T)	<b>5. LEADER NAME:</b> Gabriel Santos IMT6 SOF1	<b>6. OPERATIONAL PERIOD:</b> 05/19/13 0700 TO 05/20/13 0700
--	--	---

### INCIDENT RISK ANALYSIS - WILDLAND FIRES

DIVISION	HAZARDOUS ACTIONS / CONDITIONS	MITIGATIONS / WARNINGS / REMEDIES
ALL	DRIVING HAZARDS	Be alert for other drivers, civilians, & wildlife.
ALL	WEATHER	Base all action on current and expected fire behavior.
ALL	HYDRATION	Insure crews are hydrated and given rest breaks.
ALL	UNBURNED AREAS	Monitor current weather conditions and forecasts.
ALL	SNAG HAZARDS (Includes Utility Poles)	Maintain adequate escape routes & safety zones.

ALL	FATIGUE	Insure crews are hydrated and given rest breaks.
ALL	POISONOUS INSECTS/SNAKES	Identify, Flag, Avoid, & treat any bites or stings.
ALL	LINE CONSTRUCTION	Ensure LCES in place.
ALL	COMMUNICATIONS	Know the communications plan.
ALL	FIRE BEHAVIOR	Ensure LCES in place.

DIVISION	HAZARDOUS ACTIONS / CONDITIONS	MITIGATIONS / WARNINGS / REMEDIES
ALL R, X, Y, FS Repair	DRIVING HAZARDS UNDER SLUNG FIRE LINE PPE	Drive defensively! Headlights on. Ensure LCES in place. Use caution when working around heavy equipment

--	--	--

--	--	--

--	--	--

--	--	--

--	--	--



# INCIDENT Weather Forecast



FORECAST NO: 3

NAME OF FIRE: Grand Fire

PREDICTION FOR: 24 hr SHIFT

UNIT: LPF

SHIFT DATE: 5/19/13 (0700 – 0700)

SIGNED: Rich Thompson

TIME AND DATE

Incident Meteorologist

FORECAST ISSUED: 05/18/13 @ 2000

**WEATHER DISCUSSION:** Gusty northwest to north winds will continue through the evening hours. However...late tonight and early Monday morning...the winds will shift to a northeast direction. Through the period...it will be warmer and drier with afternoon relative humidity falling into the teens. Humidity recovery tonight will be poor.

On Monday...the northeast winds will peak mid to late morning with gusts around 40 MPH in the windier spots. Monday will be the warmest and driest day as humidity drops into the low teens and single digits. For Tuesday through Thursday...a cooling trend is expected along with an associated increase in relative humidity.

## WEATHER FORECAST:

WEATHER: Mostly clear.

TEMPERATURES: Max: 70-78. Min: 44-52.

HUMIDITY: Min: 10-20%. Max: 20-35%.

### 20 FT WINDS:

**RIDGETOP -** 0700-1500: northwest to north 15-25 MPH Gust 40 MPH  
1500-0300: northwest to north 10-20 MPH Gust 35 MPH  
0300-0700: north to northeast 10-20 MPH Gust 30 MPH

**SLOPE/VALLEY -** 0700-1500: northwest to north 15-25 MPH Gust 35 MPH  
1500-0300: west to northwest 5-15 MPH Gust 25 MPH  
0300-0700: north to northeast 10-20 MPH Gust 30 MPH

**OUTLOOK FOR MONDAY AND MONDAY NIGHT:** Clear. Max Temps: 82-92. Min Temps: 50-60. Min RH: 5-15%. Max RH: 25-40%. Ridgetop Winds: northeast 15-25 MPH Gust 40 MPH...decreasing to 10-20 MPH Gust 30 MPH in the afternoon...then shifting to northwest to north 10-20 MPH Gust 30 MPH Monday evening. Slope/Valley Winds: north to northeast 15-25 MPH Gust 40 MPH...decreasing to 10-20 MPH Gust 30 MPH in the afternoon...then shifting to northwest to north 5-15 MPH Gust 25 MPH Monday night.

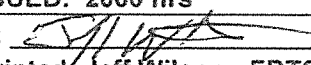
## EXTENDED FORECAST TUESDAY THROUGH THURSDAY:

**Tuesday:** Clear. Max Temps: 76-86. Min Temps: 48-58. Min RH: 12-25%. Max RH: 30-45%. Ridgetop winds: southwest to west 10-20 MPH. Slope/Valley Winds: upvalley 5-15 MPH Gust 25 MPH daytime and downslope/downvalley 2-5 MPH nighttime.

**Wednesday:** Mostly clear. Max Temps: 70-80. Min Temps: 46-56. Min RH: 20-35%. Max RH: 45-60%. Ridgetop Winds: west to northwest 10-20 MPH. Slope/Valley Winds: upvalley 5-15 MPH Gust 25 MPH daytime and downslope/downvalley 2-5 MPH nighttime.

**Thursday:** Mostly clear. Max Temps: 66-76. Min Temps: 42-52. Min RH: 30-45%. Max RH: 55-70%. Ridgetop Winds: northwest to north 15-25 MPH Gust 35 MPH. Slope/Valley Winds: west to northwest 10-20 MPH Gust 30 MPH.

## FIRE BEHAVIOR FORECAST

FORECAST NUMBER: 2	TYPE OF FIRE: Wildland
FIRE NAME: Grand Fire	OPERATIONAL PERIOD: 05/19/13 (0700 – 0700)
DATE ISSUED: 05/18/13	TIME ISSUED: 2000 hrs
UNIT: LPF	SIGNED: 
	Typed/printed: Jeff Wilson - FBTS

### INPUTS

**WEATHER SUMMARY:** Weather transition : Mostly sunny with warmer temps (70-78) and lower humidities (10-20%) during day ops with a relatively poor humidity recovery (20-35%) for night ops. N to NW winds are expected to transition late tonight and early Monday morning to NE direction with gusts to 40 mph possible.

See Incident Weather Forecast for specific temperature, relative humidity, and wind speeds and direction.

### OUTPUTS

#### FIRE BEHAVIOR

**GENERAL:** Fuels are dominated by annual grasses, soft chaparral, scrub oak, manzanita, and mixed conifer litter/understory in the higher elevations.

Fuel moistures are seasonally low. Live fuel moistures (LFM) are averaging 70-80%. Similar to mid-July fuels conditions.

ERC (Chuchupate) = 84 (above 90<sup>th</sup> percentile)

Topography is variable from gentle terrain to steep and rugged with elevation ranging from ~ 4125 – 7250 ft.

Fuels will be extremely receptive to spotting. PIG = 80-100% at peak of burn period.

Fire has been wind tested with West to North winds and established lines continue to hold.

#### SPECIFIC:

Div A and Z - Minimal fire behavior. Possible isolated smoke(s) in the interior during peak burn period.

Div O - Minimal fire behavior. Possible isolated smoke(s) in the interior during peak burn period.

Div R – Minimal fire behavior with few interior isolated smokes.

Div X – Minimal fire behavior limited to standing snags and large down fuels that continue to smolder and burnout. Pockets of unburned fuel remain a threat to control lines with anticipated change in wind direction.

Div Y – Minimal fire behavior. Dead and down will continue to smolder and burnout.

#### AIR OPERATIONS:

Good visibility should prevail through the day. Gusty winds as seen in previous operational period.

### SAFETY

Take note of change in general wind direction late Sunday / early Monday. Heavy dead and down fuels continue to burnout.



INCIDENT RADIO COMMUNICATIONS PLAN		Incident Name Grand Incident				Date/Time Prepared 5/18/2013 1900hrs	Operational Period Date/Time 5/19/2013 0700 - 0700				
Ch #	Function	Channel Name/Trunked Radio System Talkgroup	Assignment	RX Freq	N or W	RX Tone/NAC	TX Freq	N or W	Tx Tone/NAC	Mode A, D or M	Remarks
1	Command	NIFC CMD 3	DIV. R.X.Y	168.0750	N		170.4250	N	107.2	A	TONE 10
2	Command	NIFC CMD 10	DIV. A.Z, O	170.4125	N		165.9625	N	131.8	A	TONE 3
3	Tactical	NIFC TAC 1	DIV. A.Z	168.0500	N		168.0500	N		A	
4	Tactical	NIFC TAC 2	DIV. O	168.2000	N		168.2000	N		A	
5	Tactical	NIFC TAC 3	DIV. R	168.6000	N		168.6000	N		A	
6	Tactical	NIFC TAC 5	DIV. X	166.7250	N		166.7250	N		A	
7	Tactical	NIFC TAC 6	DIV. Y	166.7750	N		166.7750	N		A	
8	Tactical	NITFC TAC 7	Supresion Repair	168.2500	N		168.2500	N		A	
9	Tactical	VFIRE 22	STAGING	154.2650	N		154.2650	N	156.7	A	
10	Tactical	VFIRE 23	UNASSIGNED	154.2950	N		154.2950	N	156.7	A	
11	Air to Ground	A/G	All DIVISIONS	167.9500	N		167.9500	N			
12											
13	EMS	CALCORD	All DIVISIONS	156.0750	N		156.0750	N		A	EMS on Incident
14											
15											
16	Emergency	Air Guard	All DIVISIONS	168.6250	N		168.6250	N	110.9 ( 1 )	A	EMERGENCIES ONLY
17											
18											
19											
20	Emergency	Air Guard	All DIVISIONS	168.6250	N		168.6250	N	110.9 ( 1 )	A	EMERGENCIES ONLY

Prepared By (Communications Unit)

Incident Location  
Kern County CA

Tom Webb - COM1

The convention calls for frequency lists to show four digits after the decimal place, followed by either an "N" or a "W", depending on whether the frequency is narrow or wide band. Mode refers to either "A" or "D" indicating analog or digital (e.g. Project 25) or "M" indicating mixed mode. All channels are shown as if programmed in a control station, mobile or portable radio. Repeater and base stations must be programmed with the Rx and Tx reversed.

<b>MEDICAL PLAN</b> <b>ICS 206</b>	1. INCIDENT NAME <b>GRAND</b>	2. DATE PREPARED 5/18/2013	3. TIME PREPARED 1300	4. OPERATIONAL PERIOD 5/19/2013 0700-0700
---------------------------------------	----------------------------------	-------------------------------	--------------------------	--

5. INCIDENT MEDICAL AID STATIONS			
MEDICAL AID STATIONS	LOCATION		PARAMEDICS
			YES NO
Medical Unit	Base Camp		X

**6. TRANSPORTATION**

A. AMBULANCE SERVICES				
NAME	LOCATION	PHONE	PARAMEDICS	
			YES	NO
Mercy Air 14	1220 Flight Line #60 Mojave, Ca 93501	(661) 824-2605	X	
Hall Air Ambulance	1801 Sky Way Bakersfield, Ca 93308	(661) 327-4111	X	
H407/H408 Kern County FD Bell 212HP Hoist and Night Capable	30356 Woodford-Tehachapi Road Keene, Ca 93268	(661) 822-5555		X
Hall Ambulance (GROUND)	3212 Mt Pinos Way Frazier Park, Ca 93225	(661) 327-4111	X	

**B. INCIDENT AMBULANCES**

NAME	LOCATION	PARAMEDICS	
		YES	NO
Hall Ambulance	3212 Mt Pinos Way Frazier Park, Ca 93225 Local Ambulance 2min ETA	X	

**7. HOSPITALS**

NAME Med Net Channel	ADDRESS	TRAVEL TIME		PHONE	HELIPAD		BURN CENTER	
		AIR	GRND		YES	NO	YES	NO
Kern Medical Center Level 2 Trauma Center	1700 Mt Vernon Avenue, Bakersfield, Ca 93306	15min	40min	(661) 326-2667	X			X
Community Regional Medical Level 1 Trauma Center	2823Fresno Street Fresno, Ca 93721	25min	1hr	(559) 459-4220	X		X	
San Joaquin Community Hospital Burn Center	2615 Chester Ave. Bakersfield, Ca 93301	15min	40min	(661) 253-8000	X		X	
Henry Mayo Newhall Memorial Hospital	23845 McBean Parkway Valencia, Ca 91355	10min	30min	(661) 253-8000	X			X
Ventura County Medical Center	3191 Loma Vista Ventura, Ca 93003	20min	45min	(805) 652-6000	X			X

**8. MEDICAL EMERGENCY PROCEDURES**

**EMERGENCY FREQUENCY:**

**LINE EMERGENCY:**  
Crew Supervisor will contact Division Supervisor with patient complaint/condition and location.

- Division/Group Supervisor contacts:
  - Closest EMS resource
  - Communications Unit
- Communications Unit contacts:
  - Ground or Air ambulance as requested
  - Operations
  - Safety
  - Medical Unit
- Division Supervisor or designee will serve as point of contact and run medical emergency on assigned channel.
  - A pre-assigned tactical frequency (i.e. CALCORD) should be used for IW1 and only for duration of need.
- Communications Unit will clear command channel for emergency traffic as needed and only for duration of need.

**CAMP EMERGENCY:**  
Contact Medical Unit with patient complaint/condition and location. Medical Staff will respond to stabilize incident:

- Medical Unit contacts:
  - Communications
  - Safety
  - Logistics
  - Operations
  - Crew Supervisor
  - Comps/Claims

**INJURY REPORTING PROCEDURES**

NATURE OF INJURY \_\_\_\_\_  
 LOCATION OF PATIENT \_\_\_\_\_  
 POINT OF CONTACT \_\_\_\_\_  
 TRANSPORTATION REQUESTED BY: AIR \_\_\_ GROUND \_\_\_  
 POINT OF PICKUP \_\_\_\_\_  
 LAT \_\_\_\_\_ LONG \_\_\_\_\_  
 PATIENT UNIT ID \_\_\_\_\_  
 IS AN EMT WITH PATIENT: YES \_\_\_ NO \_\_\_  
 AGE \_\_\_\_\_  
 SEX: MALE \_\_\_ FEMALE \_\_\_

**ALL EMERGENCIES---Secure the area  
and identify witnesses for later  
investigation. Keep an accurate log of  
events.**

<b>ICS 206</b> (Rev 03/12)	9. PREPARED BY: (Medical Unit Leader) Pablo Barriga / MEDL 	10. REVIEWED BY: (Safety Officer) Gabe Santos IMT6 SOF1 
-------------------------------	---	--

**Grand Fire  
CA-LPF-001281  
Fire Suppression Repair Plan**

May 18, 2013

General:

- Repair fences damaged resulting from fire suppression activities.
- Remove berms and barriers created by the fire control access.
- Note and advise Logistics of all litter drops.
- Report any damages or needs to the ICP, Fire Suppression Repair Specialist or Situation Unit Leader.

Staging Areas / Safety Zones:

- New Construction: cross drain and abandon (if applicable).
- Existing: Repair to original condition, remove debris resulting from use.

Roads:

- Grade to original prism where necessary.
- Clean culverts plugged with soil resulting from fire road use.
- Breach/remove berms to facilitate drainage.

Firelines:

- Install waterbreaks on all constructed or used dozer lines using the following criteria:

Slope	0-10	11-25	26-50	>50
Dozer line	100'	75'	50'	50'
Road	200'	150'	100'	75'

Handlines:

- Handlines shall be waterbarred as determined by Division Supervisor.

(all waterbreaks should be installed diagonally with a minimum cut of 6" into existing grade, and minimum height of 18". Waterbreaks shall be installed at all watercourse crossings. Waterbreaks shall be constructed to allow for drainage at the discharge end into non-erodible material.

Watercourses:

- All slash, soil, and debris deposited into watercourses resulting from fire suppression activities shall be removed and stabilized.
- Major watercourse damage, if present shall be reported to the Suppression Repair Unit.
- Where fire lines are constructed within 100' of running watercourses, straw or mulching will be conducted. All loose soil must be pulled away from the watercourse and stabilized.

Slash piles

- Piles within 150' of permanent structures or public roads will be lopped and/or scattered within 18" of soil surface.
- Piles outside the 150' fire safe zone shall be retained for wildlife cover.

Archaeological or Historic Sites (if discovered):

- All potential sites shall be avoided.
- Impacted sites will be reported to the Rehabilitation Unit Leader as soon as possible.
- If sites are encroached upon, work will stop immediately if there is no threat of fire spread, and the Division/Group Supervisor shall be notified.

# **Training Message**

**For those trainee's ready to demob,  
it's time to close out your incident file**

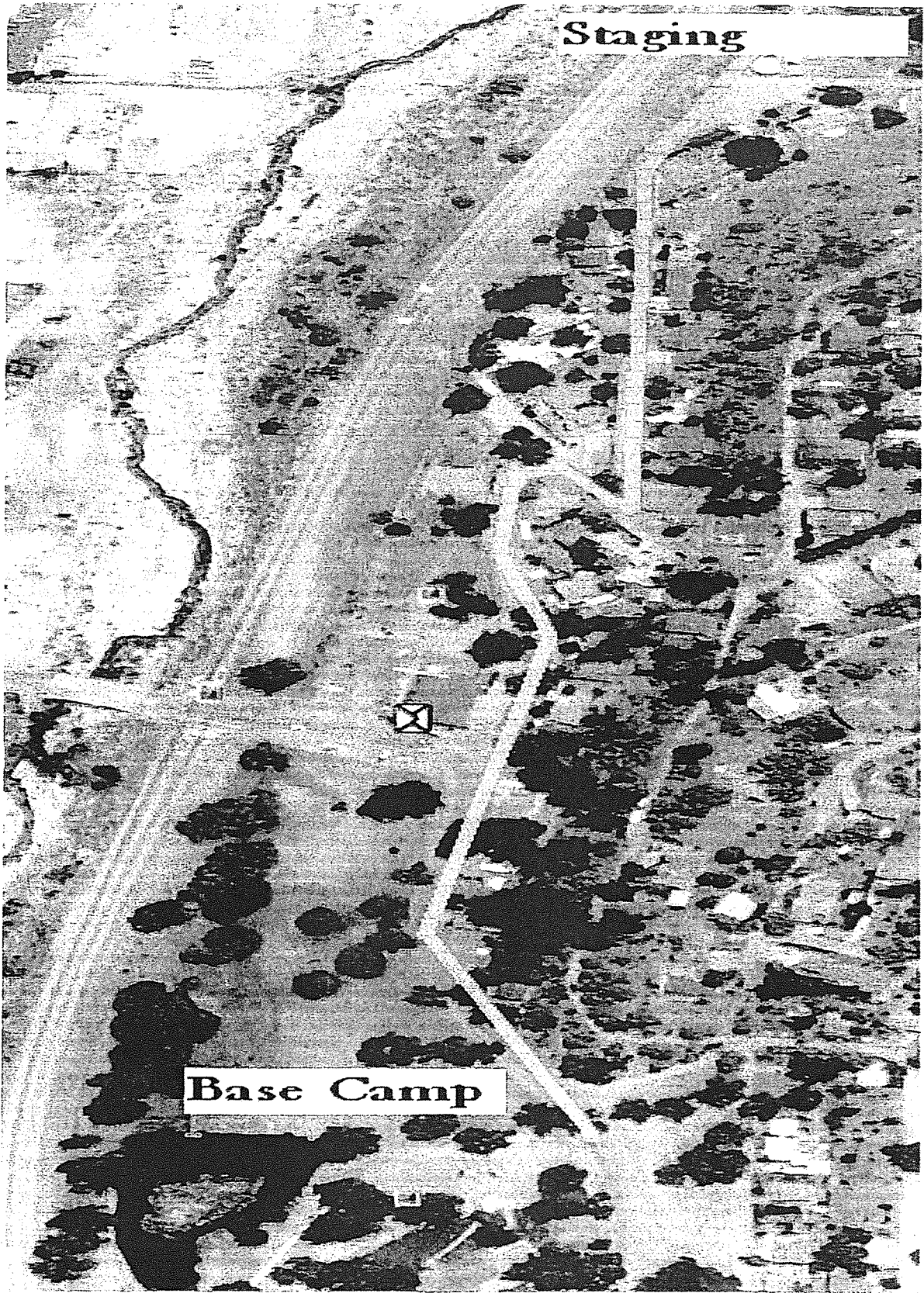
**NOW!**

**Come see me before I get demobed  
myself!**

**Tim the training guy**

**Check out the real cool form on the back**

<b>INCIDENT PERSONNEL PERFORMANCE RATING</b>		<i>INSTRUCTIONS:</i> The immediate job supervisor will prepare this form for each subordinate. It will be delivered to the planning section before the rater leaves the fire. Rating will be reviewed with employee who will sign at the bottom.																	
THIS RATING IS TO BE USED ONLY FOR DETERMINING AN INDIVIDUAL'S PERFORMANCE																			
1. Name				2. Fire Name and Number															
3. Home Unit (address)				4. Location of Fire (address)															
5. Fire Position		6. Date of Assignment From:                      To:		7. Acres Burned		8. Fuel Type(s)													
<b>9. Evaluation</b>																			
Enter X under appropriate rating number and under proper heading for each category listed. Definition for each rating number follows: 0 - Deficient. Does not meet minimum requirements of the individual element. DEFICIENCIES MUST BE IDENTIFIED IN REMARKS. 1 - Needs to improve. Meets some or most of the requirements of the individual element. IDENTIFY IMPROVEMENT NEEDED IN REMARKS. 2 - Satisfactory. Employee meets all requirements of the individual element. 3 - Superior. Employee consistently exceeds the performance requirements.																			
Rating Factors				Hot Line		Mop-Up		Camp		Other (specify)									
				0	1	2	3	0	1	2	3	0	1	2	3	0	1	2	3
Knowledge of the job																			
Ability to obtain performance																			
Attitude																			
Decisions under stress																			
Initiative																			
Consideration for personnel welfare																			
Obtain necessary equipment and supplies																			
Physical ability for the job																			
Safety																			
Other (specify)																			
10. Remarks																			
11. Employee (signature) This rating has been discussed with me						12. Date													
13. Rated By (signature)		14. Home Unit (address)		15. Position of Fire		16. Date													

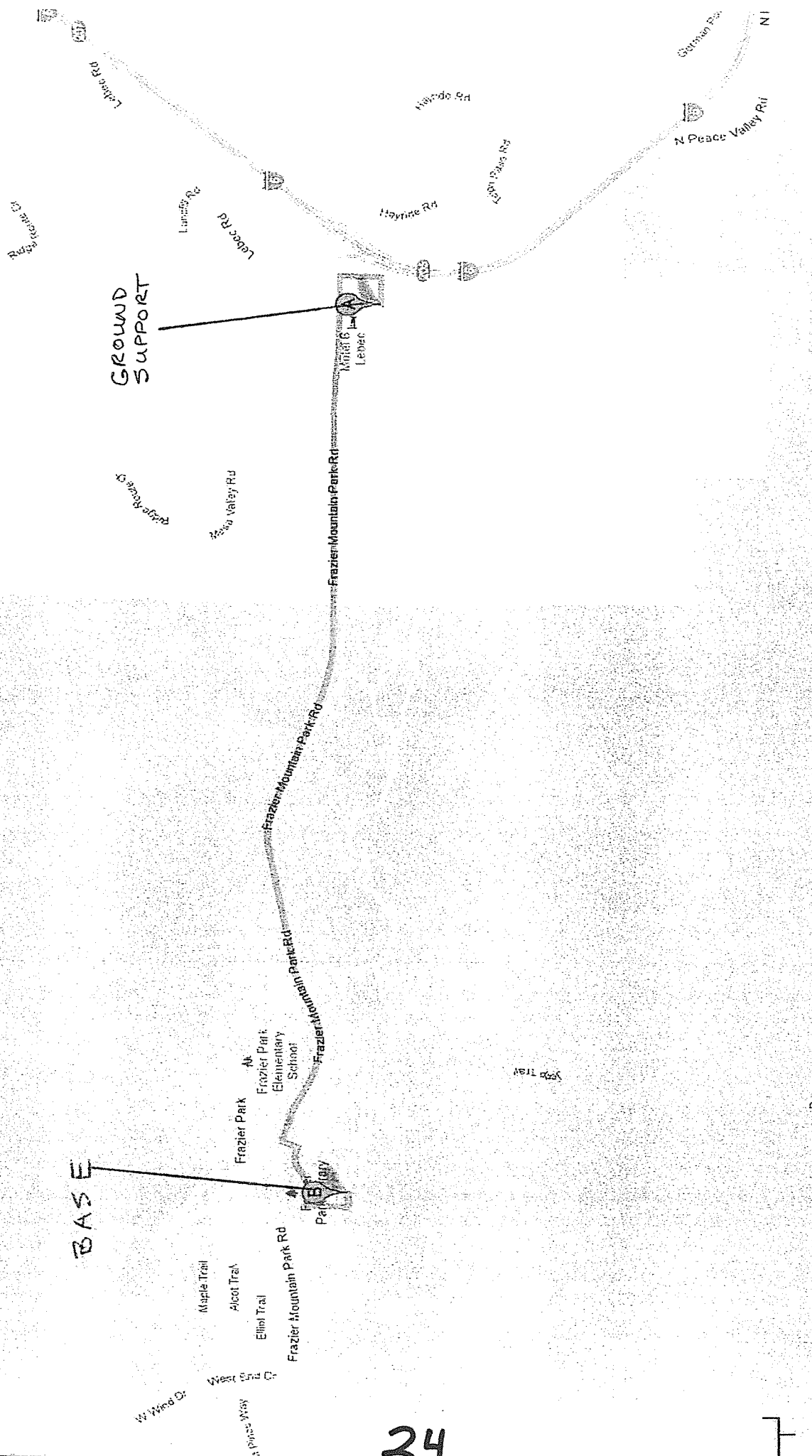


Staging

Base Camp

Foot Travel Route From Staging to Base Camp = .4 miles

Show panel







25

