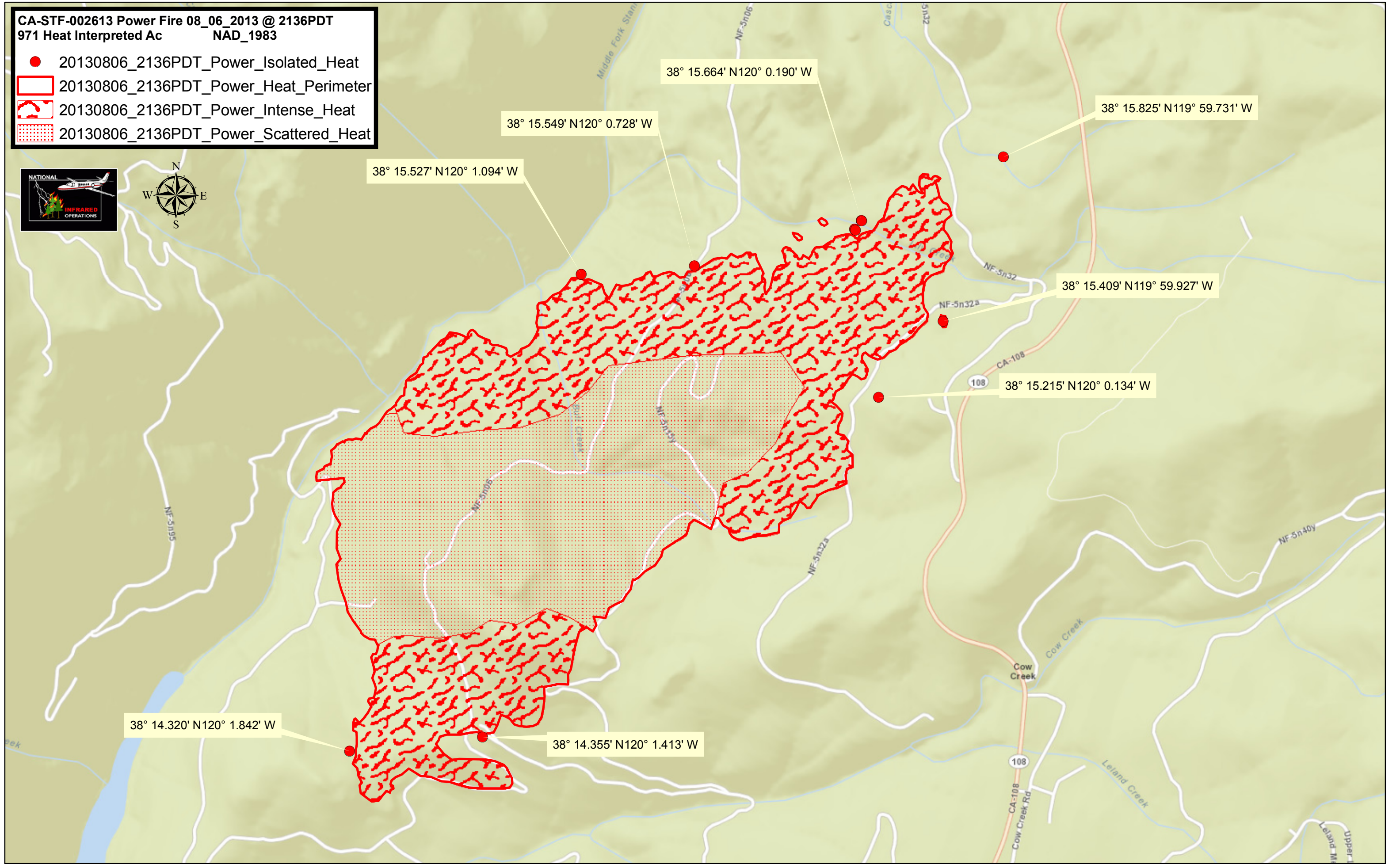


CA-STF-002613 Power Fire 08_06_2013 @ 2136PDT
 971 Heat Interpreted Ac NAD_1983

- 20130806_2136PDT_Power_Isolated_Heat
- ▭ 20130806_2136PDT_Power_Heat_Perimeter
- ▭ 20130806_2136PDT_Power_Intense_Heat
- ▭ 20130806_2136PDT_Power_Scattered_Heat



38° 14.320' N120° 1.842' W

38° 14.355' N120° 1.413' W

38° 15.527' N120° 1.094' W

38° 15.549' N120° 0.728' W

38° 15.664' N120° 0.190' W

38° 15.215' N120° 0.134' W

38° 15.409' N119° 59.927' W

38° 15.825' N119° 59.731' W

