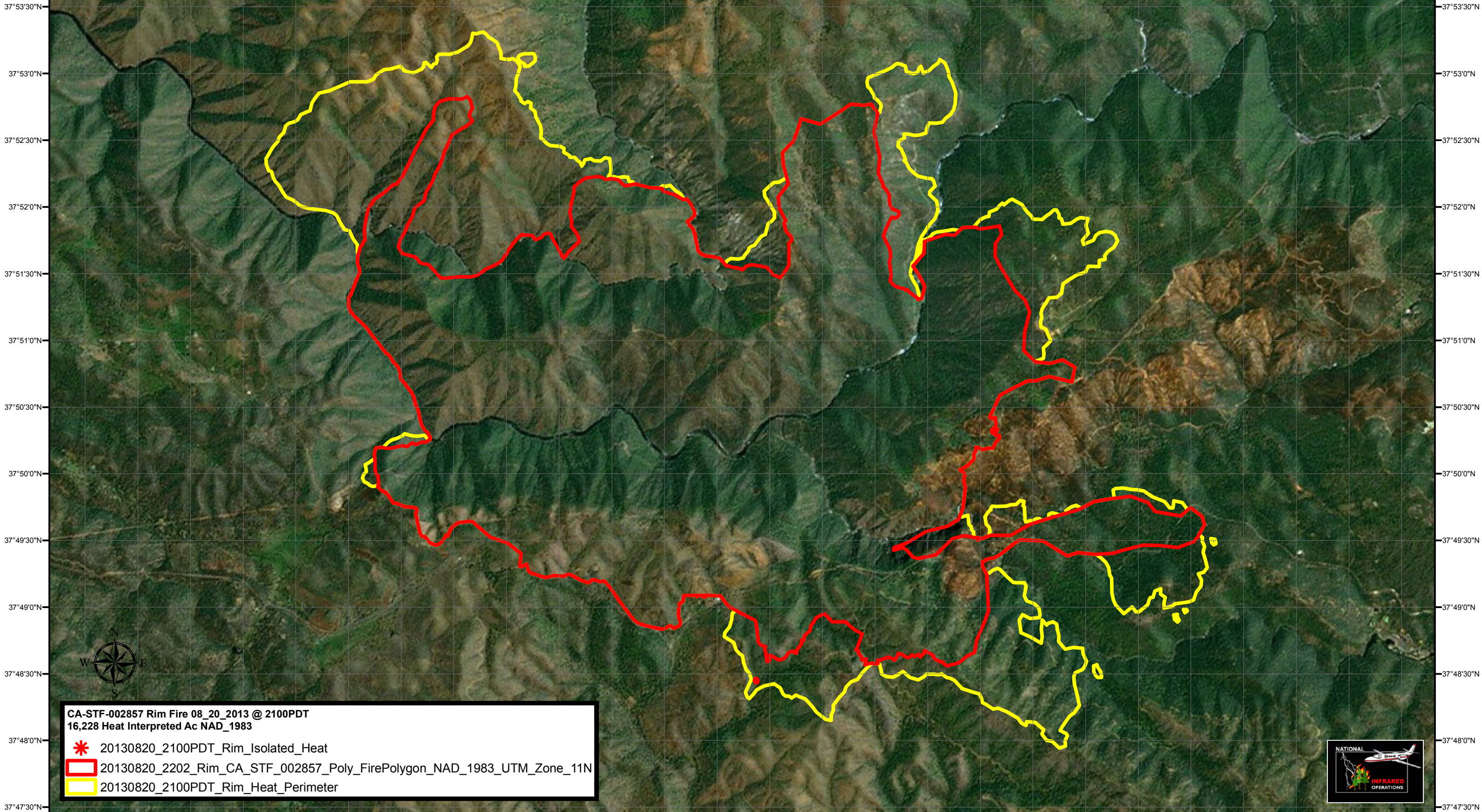





120°9'30"W 120°9'0"W 120°8'30"W 120°8'0"W 120°7'30"W 120°7'0"W 120°6'30"W 120°6'0"W 120°5'30"W 120°5'0"W 120°4'30"W 120°4'0"W 120°3'30"W 120°3'0"W 120°2'30"W 120°2'0"W 120°1'30"W 120°1'0"W 120°0'30"W 120°0'0"W 119°59'30"W 119°59'0"W 119°58'30"W 119°58'0"W 119°57'30"W 119°57'0"W



**CA-STF-002857 Rim Fire 08\_20\_2013 @ 2100PDT**  
**16,228 Heat Interpreted Ac NAD\_1983**

-  20130820\_2100PDT\_Rim\_Isolated\_Heat
-  20130820\_2202\_Rim\_CA\_STF\_002857\_Poly\_FirePolygon\_NAD\_1983\_UTM\_Zone\_11N
-  20130820\_2100PDT\_Rim\_Heat\_Perimeter



0 0.5 1 2 3 4 Miles

C. W. Boehman III IRN

37°53'30"N 37°53'0"N 37°52'30"N 37°52'0"N 37°51'30"N 37°51'0"N 37°50'30"N 37°50'0"N 37°49'30"N 37°49'0"N 37°48'30"N 37°48'0"N 37°47'30"N