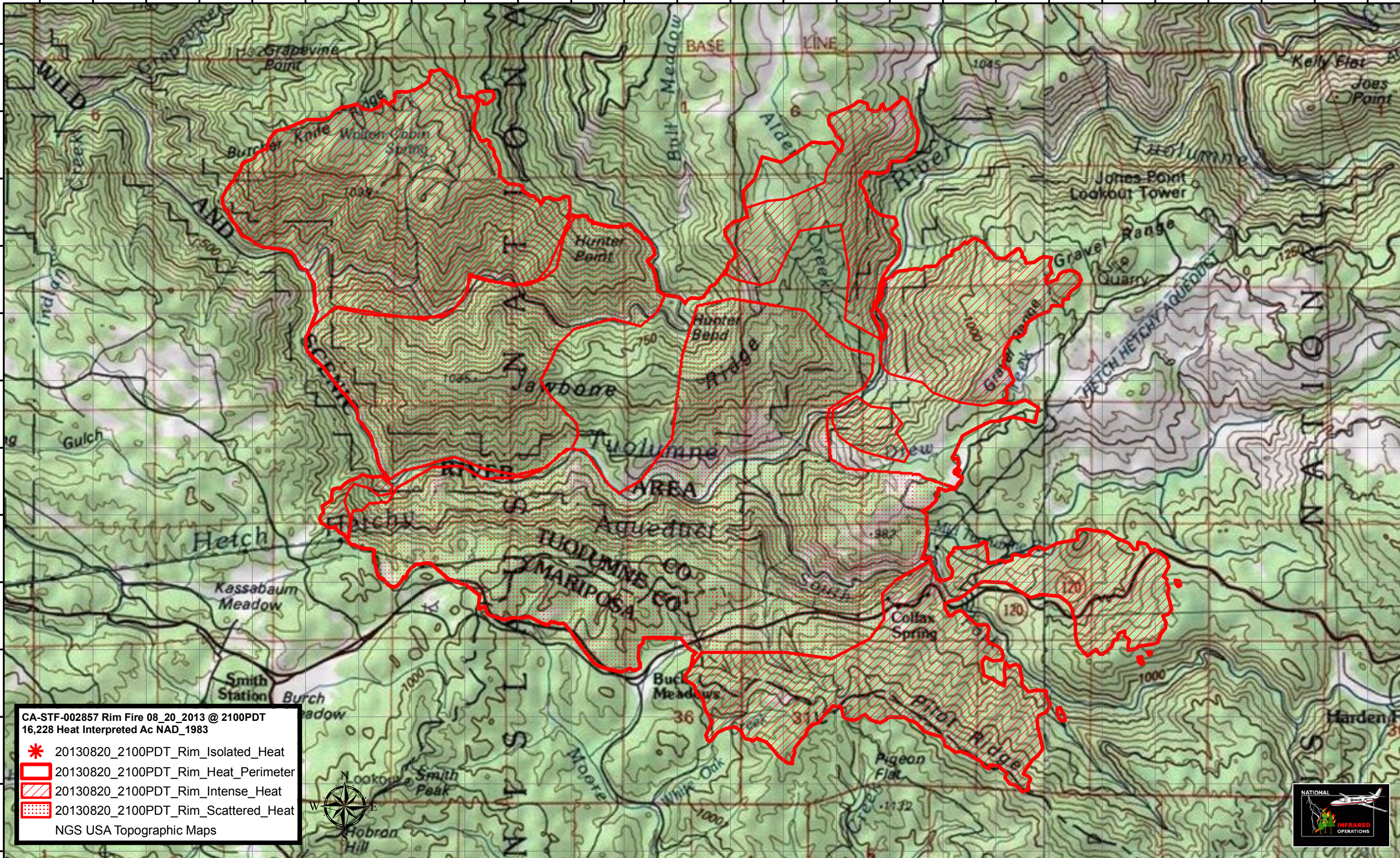


120°9'30"W 120°9'0"W 120°8'30"W 120°8'0"W 120°7'30"W 120°7'0"W 120°6'30"W 120°6'0"W 120°5'30"W 120°5'0"W 120°4'30"W 120°4'0"W 120°3'30"W 120°3'0"W 120°2'30"W 120°2'0"W 120°1'30"W 120°1'0"W 120°0'30"W 120°0'0"W 119°59'30"W 119°59'0"W 119°58'30"W 119°58'0"W 119°57'30"W 119°57'0"W

37°53'30"N
37°53'0"N
37°52'30"N
37°52'0"N
37°51'30"N
37°51'0"N
37°50'30"N
37°50'0"N
37°49'30"N
37°49'0"N
37°48'30"N
37°48'0"N
37°47'30"N

37°53'30"N
37°53'0"N
37°52'30"N
37°52'0"N
37°51'30"N
37°51'0"N
37°50'30"N
37°50'0"N
37°49'30"N
37°49'0"N
37°48'30"N
37°48'0"N
37°47'30"N



CA-STF-002857 Rim Fire 08_20_2013 @ 2100PDT
16,228 Heat Interpreted Ac NAD_1983

- 20130820_2100PDT_Rim_Isolated_Heat
- 20130820_2100PDT_Rim_Heat_Perimeter
- 20130820_2100PDT_Rim_Intense_Heat
- 20130820_2100PDT_Rim_Scattered_Heat

NGS USA Topographic Maps



Miles

0 0.5 1 2 3 4

C. Bloxham III