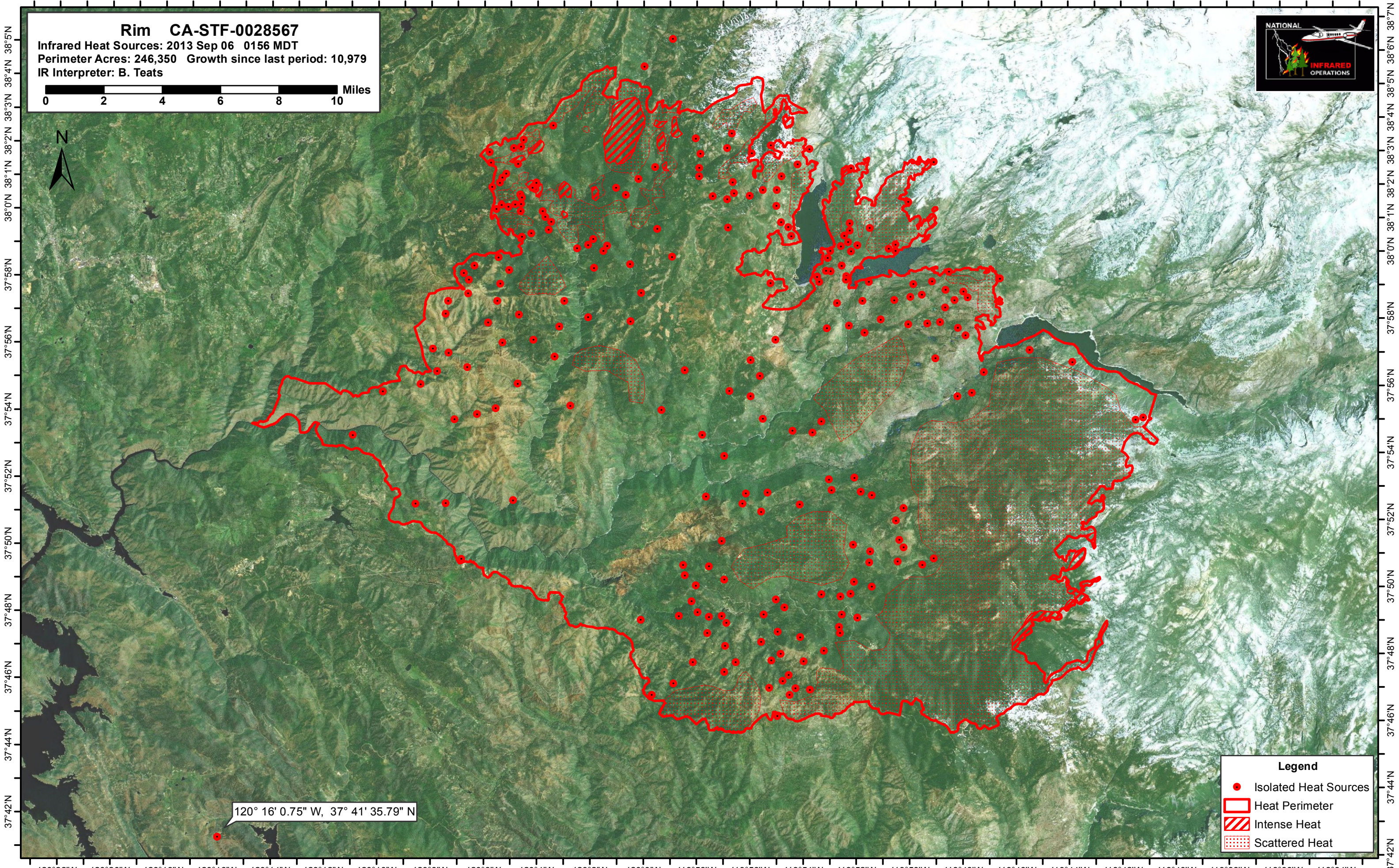


120°24'W 120°22'W 120°20'W 120°18'W 120°16'W 120°14'W 120°12'W 120°10'W 120°8'W 120°6'W 120°4'W 120°2'W 120°0'W 119°58'W 119°56'W 119°54'W 119°52'W 119°50'W 119°48'W 119°46'W 119°44'W 119°42'W 119°40'W 119°38'W 119°36'W 119°34'W

Rim CA-STF-0028567
Infrared Heat Sources: 2013 Sep 06 0156 MDT
Perimeter Acres: 246,350 Growth since last period: 10,979
IR Interpreter: B. Teats



38°0'N 38°1'N 38°2'N 38°3'N 38°4'N 38°5'N
37°58'N 37°56'N 37°54'N 37°52'N 37°50'N 37°48'N 37°46'N 37°44'N 37°42'N

38°0'N 38°1'N 38°2'N 38°3'N 38°4'N 38°5'N
37°58'N 37°56'N 37°54'N 37°52'N 37°50'N 37°48'N 37°46'N 37°44'N 37°42'N

120° 16' 0.75" W, 37° 41' 35.79" N

Legend

- Isolated Heat Sources
- Heat Perimeter
- Intense Heat
- Scattered Heat

120°22'W 120°20'W 120°18'W 120°16'W 120°14'W 120°12'W 120°10'W 120°8'W 120°6'W 120°4'W 120°2'W 120°0'W 119°58'W 119°56'W 119°54'W 119°52'W 119°50'W 119°48'W 119°46'W 119°44'W 119°42'W 119°40'W 119°38'W 119°36'W 119°34'W