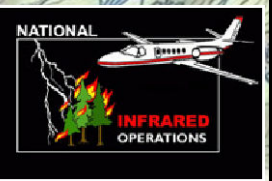


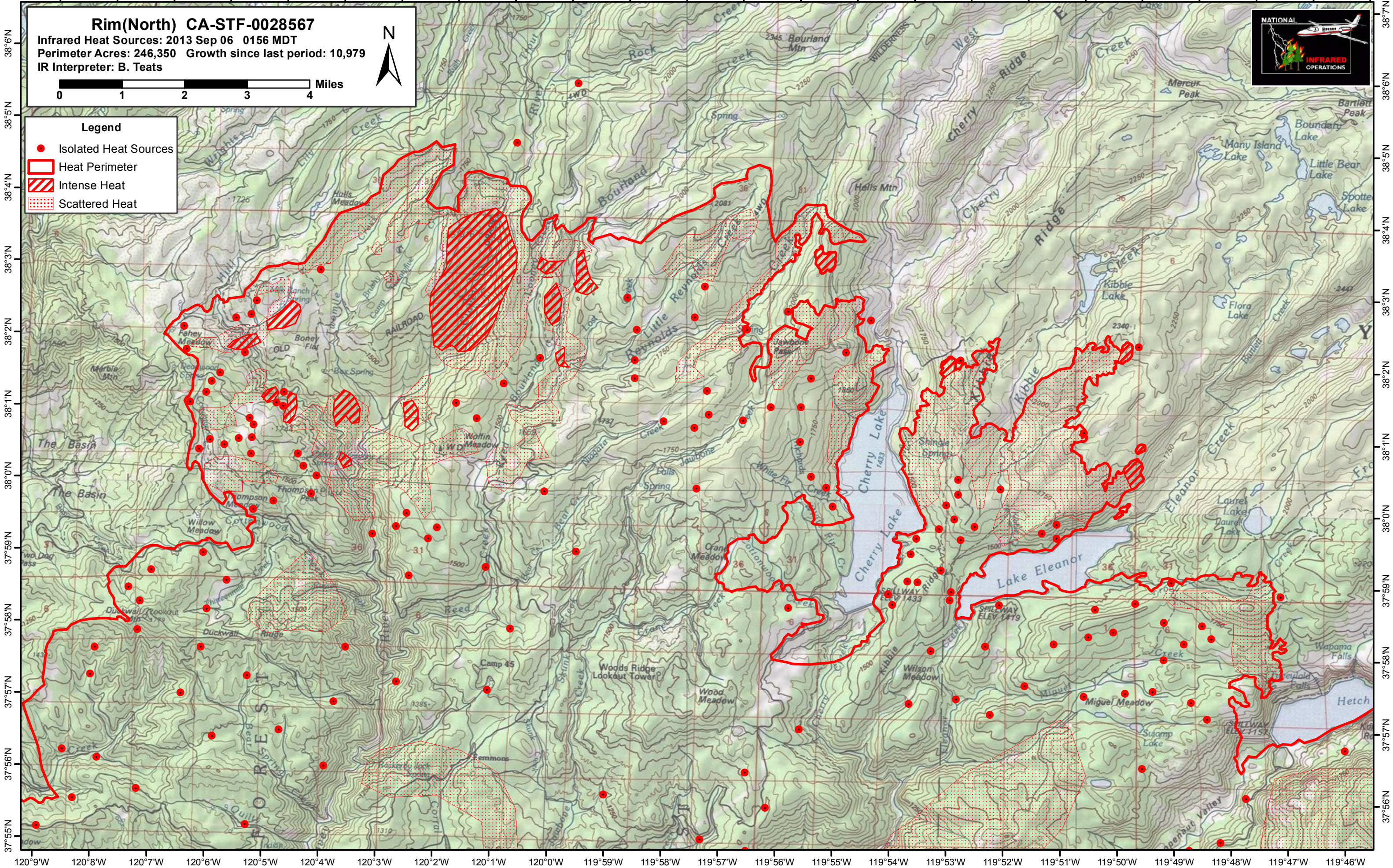
120°9'W 120°8'W 120°7'W 120°6'W 120°5'W 120°4'W 120°3'W 120°2'W 120°1'W 120°0'W 119°59'W 119°58'W 119°57'W 119°56'W 119°55'W 119°54'W 119°53'W 119°52'W 119°51'W 119°50'W 119°49'W 119°48'W 119°47'W 119°46'W

**Rim(North) CA-STF-0028567**  
 Infrared Heat Sources: 2013 Sep 06 0156 MDT  
 Perimeter Acres: 246,350 Growth since last period: 10,979  
 IR Interpreter: B. Teats



**Legend**

- Isolated Heat Sources
- Heat Perimeter
- Intense Heat
- Scattered Heat



120°9'W 120°8'W 120°7'W 120°6'W 120°5'W 120°4'W 120°3'W 120°2'W 120°1'W 120°0'W 119°59'W 119°58'W 119°57'W 119°56'W 119°55'W 119°54'W 119°53'W 119°52'W 119°51'W 119°50'W 119°49'W 119°48'W 119°47'W 119°46'W

37°55'N

37°56'N

37°57'N

37°58'N

37°59'N

38°0'N

38°1'N

38°2'N

38°3'N

38°4'N

38°5'N

38°6'N

119°46'W

119°47'W

119°48'W

119°49'W

119°50'W

119°51'W

119°52'W

119°53'W

119°54'W

119°55'W

119°56'W

119°57'W

119°46'W

119°47'W

119°48'W

119°49'W

119°50'W

119°51'W

119°52'W

119°53'W

119°54'W

119°55'W

119°56'W

119°57'W