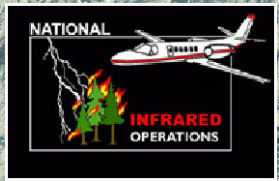
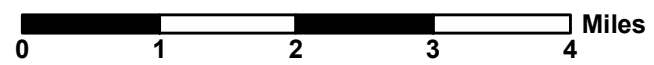


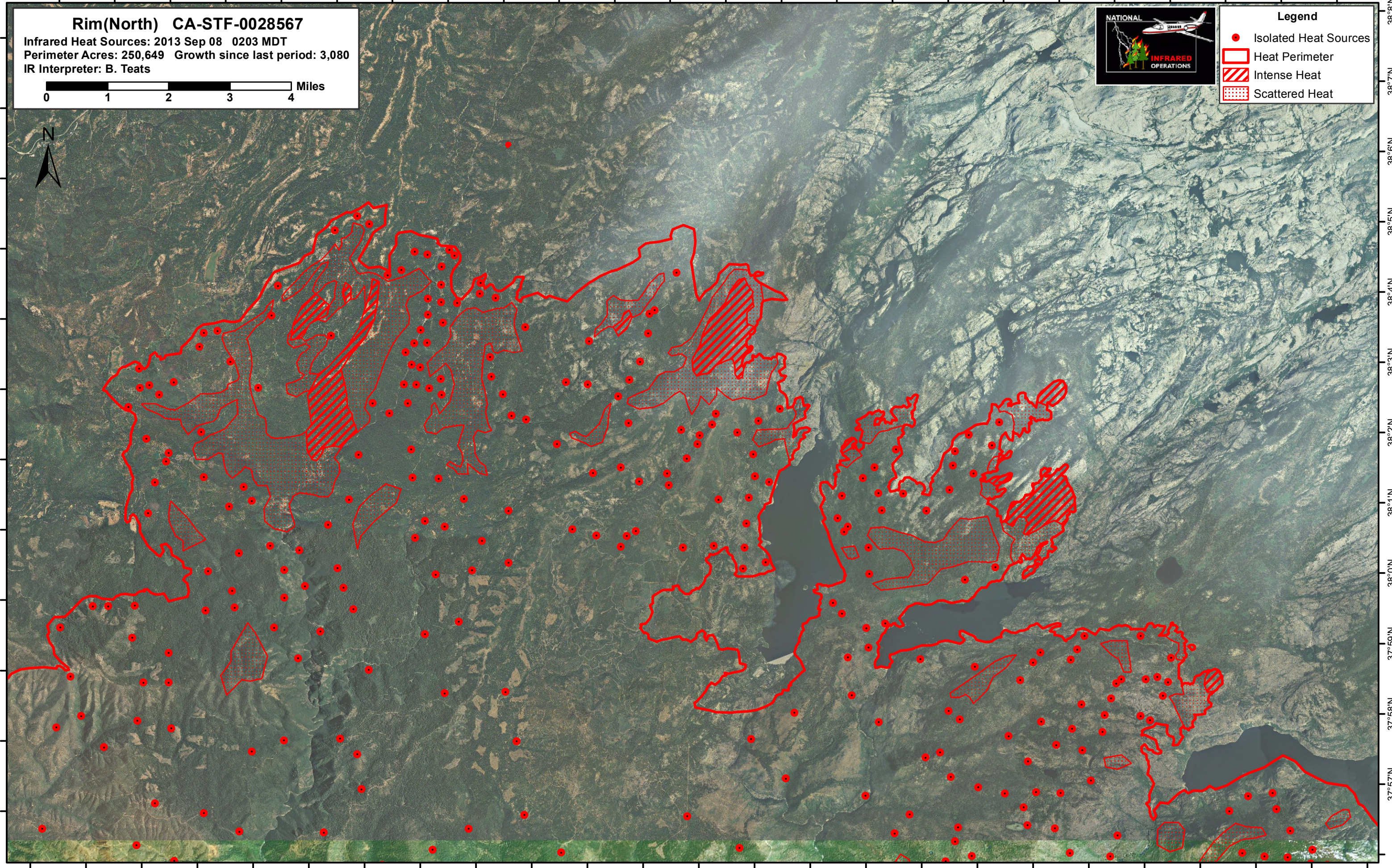
120°8'W 120°7'W 120°6'W 120°5'W 120°4'W 120°3'W 120°2'W 120°1'W 120°0'W 119°59'W 119°58'W 119°57'W 119°56'W 119°55'W 119°54'W 119°53'W 119°52'W 119°51'W 119°50'W 119°49'W 119°48'W 119°47'W 119°46'W 119°45'W

**Rim(North) CA-STF-0028567**  
Infrared Heat Sources: 2013 Sep 08 0203 MDT  
Perimeter Acres: 250,649 Growth since last period: 3,080  
IR Interpreter: B. Teats



**Legend**

- Isolated Heat Sources
- Heat Perimeter
- ▨ Intense Heat
- ▤ Scattered Heat



120°8'W 120°7'W 120°6'W 120°5'W 120°4'W 120°3'W 120°2'W 120°1'W 120°0'W 119°59'W 119°58'W 119°57'W 119°56'W 119°55'W 119°54'W 119°53'W 119°52'W 119°51'W 119°50'W 119°49'W 119°48'W 119°47'W 119°46'W 119°45'W 119°44'W

38°7'N  
38°6'N  
38°5'N  
38°4'N  
38°3'N  
38°2'N  
38°1'N  
38°0'N  
37°59'N  
37°58'N  
37°57'N  
37°56'N

38°8'N  
38°7'N  
38°6'N  
38°5'N  
38°4'N  
38°3'N  
38°2'N  
38°1'N  
38°0'N  
37°59'N  
37°58'N  
37°57'N