

119°50'W 119°49'W 119°48'W 119°47'W 119°46'W 119°45'W 119°44'W 119°43'W 119°42'W 119°41'W 119°40'W 119°39'W 119°38'W 119°37'W

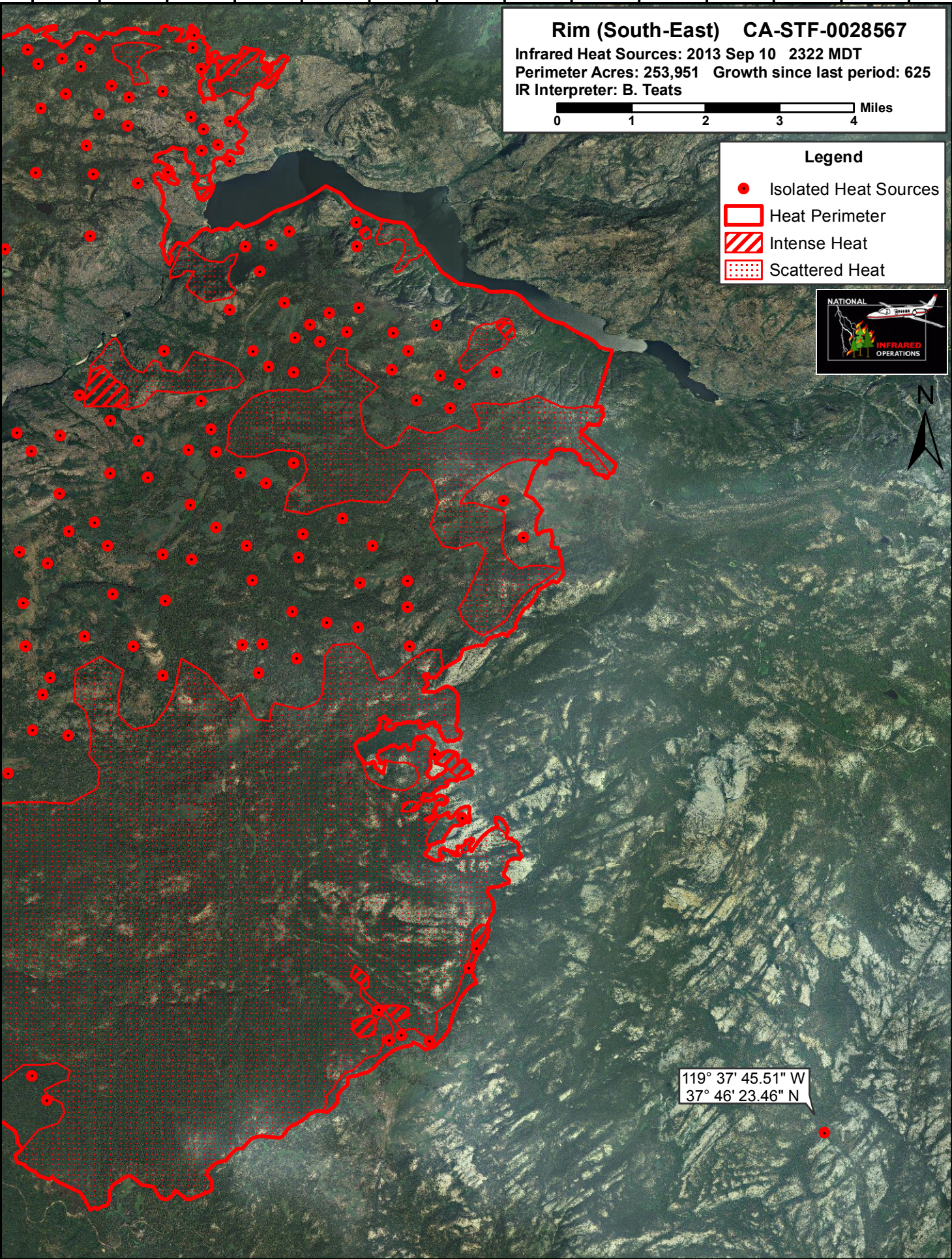
37°59'N
37°58'N
37°57'N
37°56'N
37°55'N
37°54'N
37°53'N
37°52'N
37°51'N
37°50'N
37°49'N
37°48'N
37°47'N
37°46'N
37°45'N

37°59'N
37°58'N
37°57'N
37°56'N
37°55'N
37°54'N
37°53'N
37°52'N
37°51'N
37°50'N
37°49'N
37°48'N
37°47'N
37°46'N

Rim (South-East) CA-STF-0028567
 Infrared Heat Sources: 2013 Sep 10 2322 MDT
 Perimeter Acres: 253,951 Growth since last period: 625
 IR Interpreter: B. Teats

Legend

- Isolated Heat Sources
- Heat Perimeter
- Intense Heat
- Scattered Heat



119° 37' 45.51" W
 37° 46' 23.46" N

119°49'W 119°48'W 119°47'W 119°46'W 119°45'W 119°44'W 119°43'W 119°42'W 119°41'W 119°40'W 119°39'W 119°38'W 119°37'W