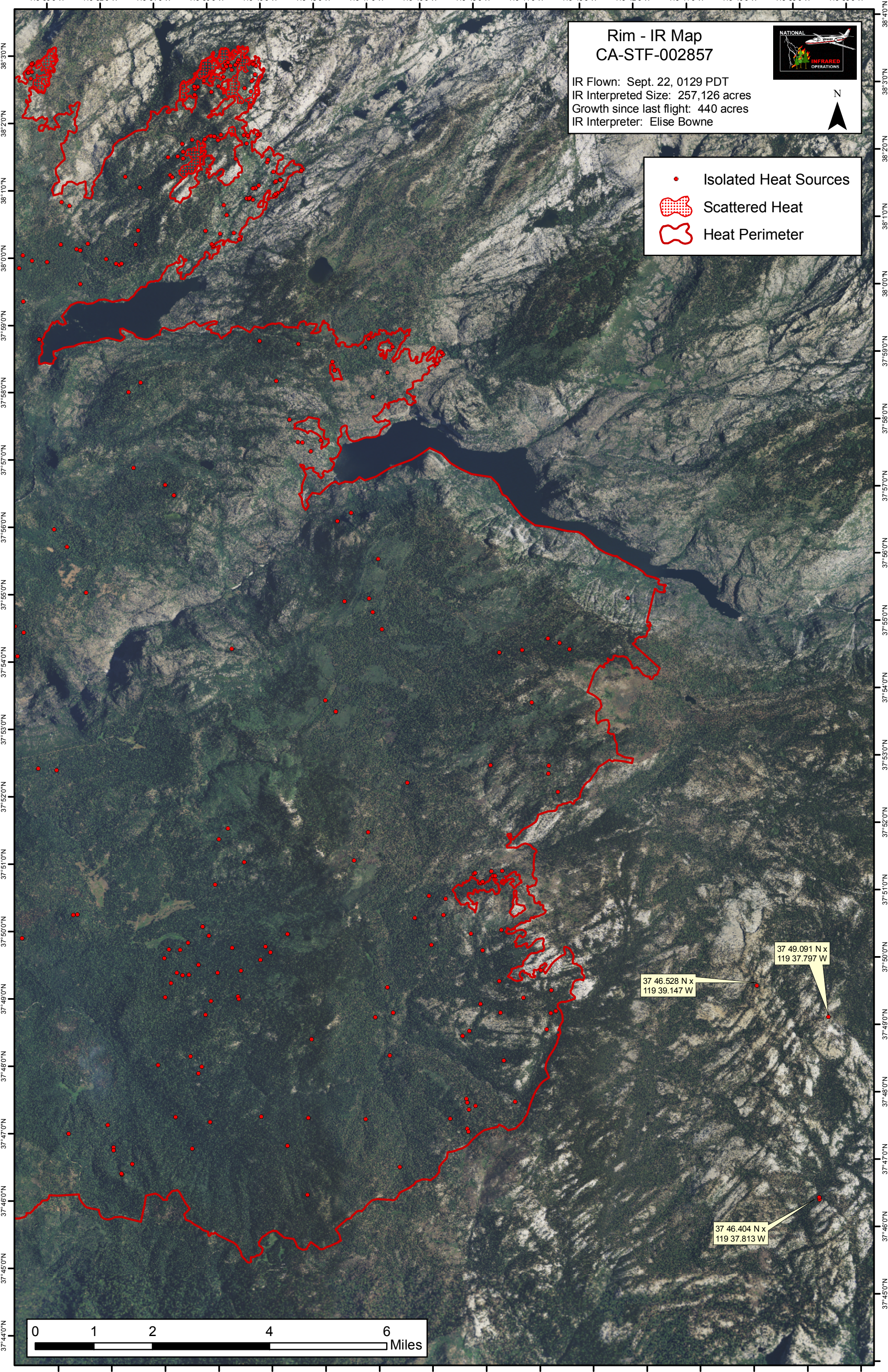



119°53'0"W 119°52'0"W 119°51'0"W 119°50'0"W 119°49'0"W 119°48'0"W 119°47'0"W 119°46'0"W 119°45'0"W 119°44'0"W 119°43'0"W 119°42'0"W 119°41'0"W 119°40'0"W 119°39'0"W 119°38'0"W



**Rim - IR Map**  
**CA-STF-002857**

IR Flown: Sept. 22, 0129 PDT  
 IR Interpreted Size: 257,126 acres  
 Growth since last flight: 440 acres  
 IR Interpreter: Elise Bowne



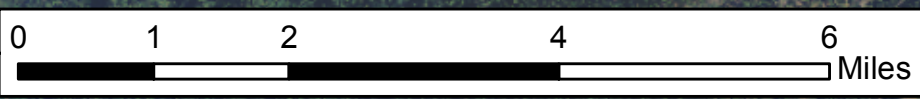
N

- Isolated Heat Sources
- ▨ Scattered Heat
- ▭ Heat Perimeter

37 49.091 N x  
119 37.797 W

37 46.528 N x  
119 39.147 W

37 46.404 N x  
119 37.813 W



119°52'0"W 119°51'0"W 119°50'0"W 119°49'0"W 119°48'0"W 119°47'0"W 119°46'0"W 119°45'0"W 119°44'0"W 119°43'0"W 119°42'0"W 119°41'0"W 119°40'0"W 119°39'0"W 119°38'0"W 119°37'0"W