

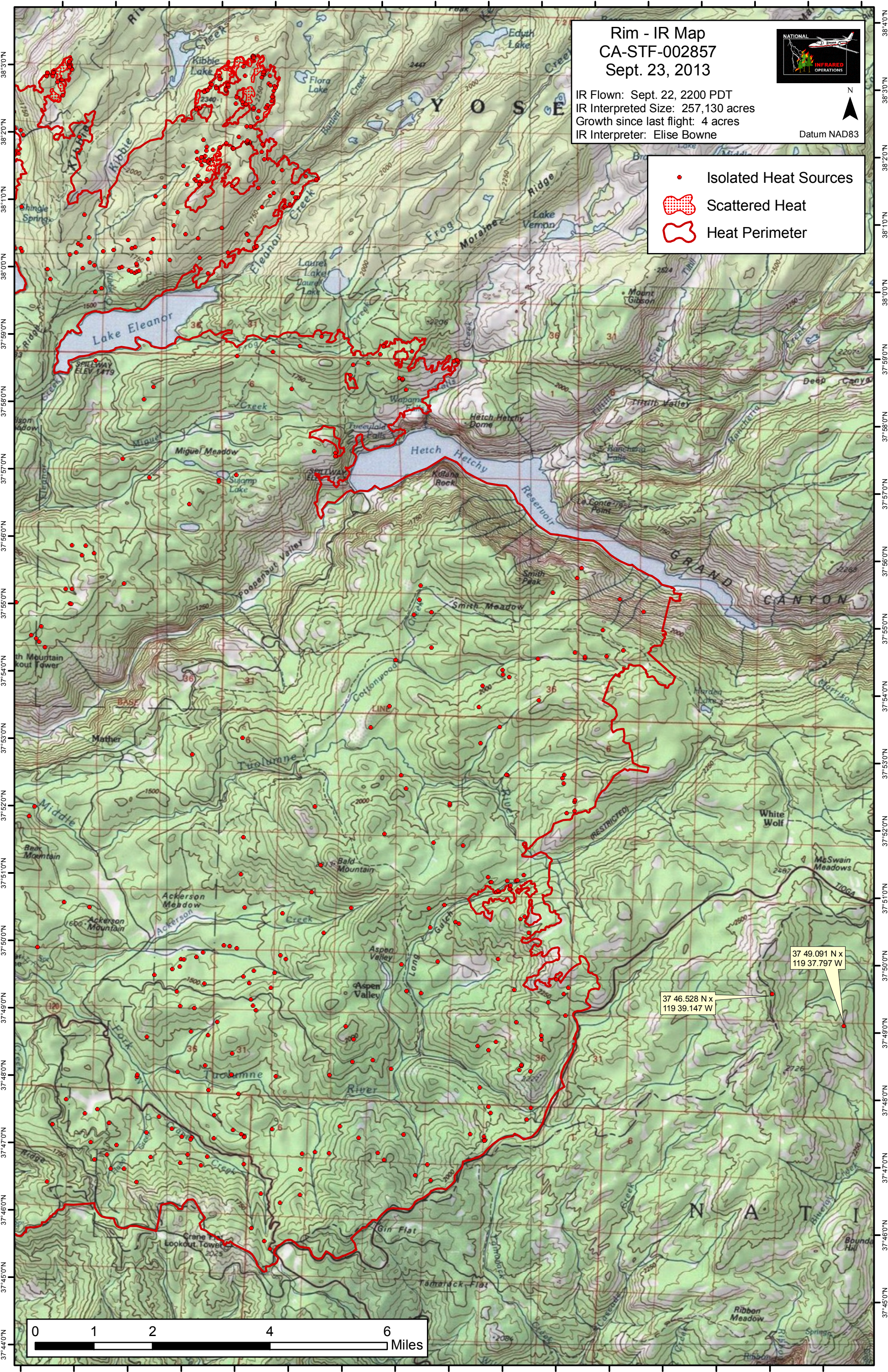
Rim - IR Map CA-STF-002857 Sept. 23, 2013

IR Flown: Sept. 22, 2200 PDT
IR Interpreted Size: 257,130 acres
Growth since last flight: 4 acres
IR Interpreter: Elise Bowne



Datum NAD83

- Isolated Heat Sources
- ▨ Scattered Heat
- Heat Perimeter



37 46.528 N x
119 39.147 W

37 49.091 N x
119 37.797 W

