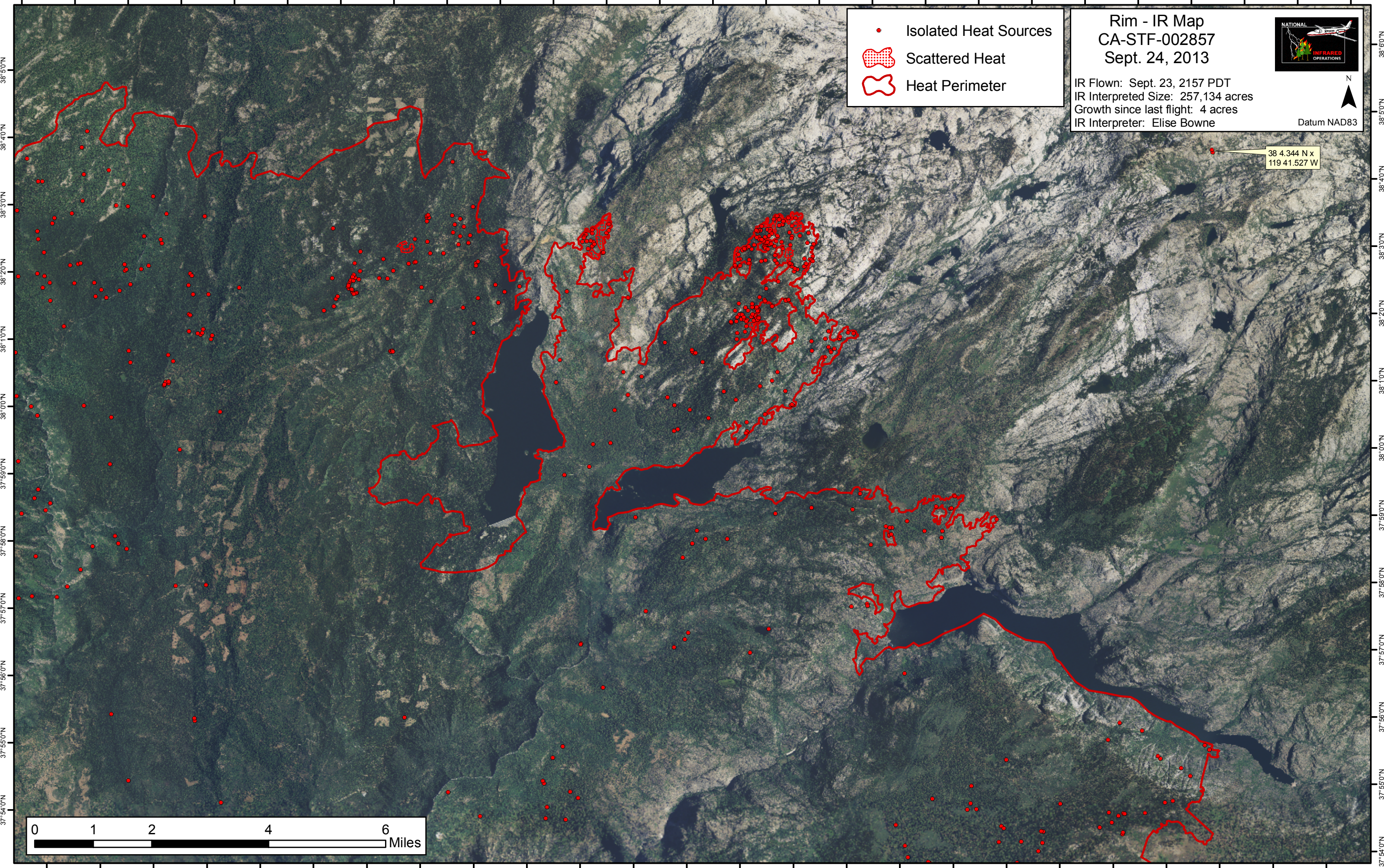


120°40'W 120°30'W 120°20'W 120°10'W 120°0'0'W 119°59'0'W 119°58'0'W 119°57'0'W 119°56'0'W 119°55'0'W 119°54'0'W 119°53'0'W 119°52'0'W 119°51'0'W 119°50'0'W 119°49'0'W 119°48'0'W 119°47'0'W 119°46'0'W 119°45'0'W 119°44'0'W 119°43'0'W 119°42'0'W 119°41'0'W 119°40'0'W 119°39'0'W





- Isolated Heat Sources
- ▨ Scattered Heat
- ▭ Heat Perimeter

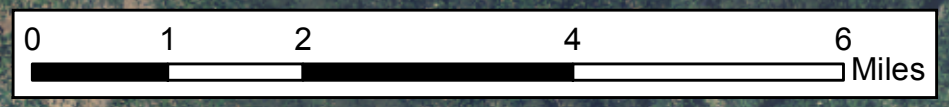
Rim - IR Map
CA-STF-002857
Sept. 24, 2013

IR Flown: Sept. 23, 2157 PDT
 IR Interpreted Size: 257,134 acres
 Growth since last flight: 4 acres
 IR Interpreter: Elise Bowne

Datum NAD83

38 4.344 N x
119 41.527 W



120°30'W 120°20'W 120°10'W 120°0'0'W 119°59'0'W 119°58'0'W 119°57'0'W 119°56'0'W 119°55'0'W 119°54'0'W 119°53'0'W 119°52'0'W 119°51'0'W 119°50'0'W 119°49'0'W 119°48'0'W 119°47'0'W 119°46'0'W 119°45'0'W 119°44'0'W 119°43'0'W 119°42'0'W 119°41'0'W 119°40'0'W 119°39'0'W

38°50'N
38°40'N
38°30'N
38°20'N
38°10'N
38°00'N
37°59'0'N
37°58'0'N
37°57'0'N
37°56'0'N
37°55'0'N
37°54'0'N

38°60'N
38°50'N
38°40'N
38°30'N
38°20'N
38°10'N
38°00'N
37°59'0'N
37°58'0'N
37°57'0'N
37°56'0'N
37°55'0'N
37°54'0'N