

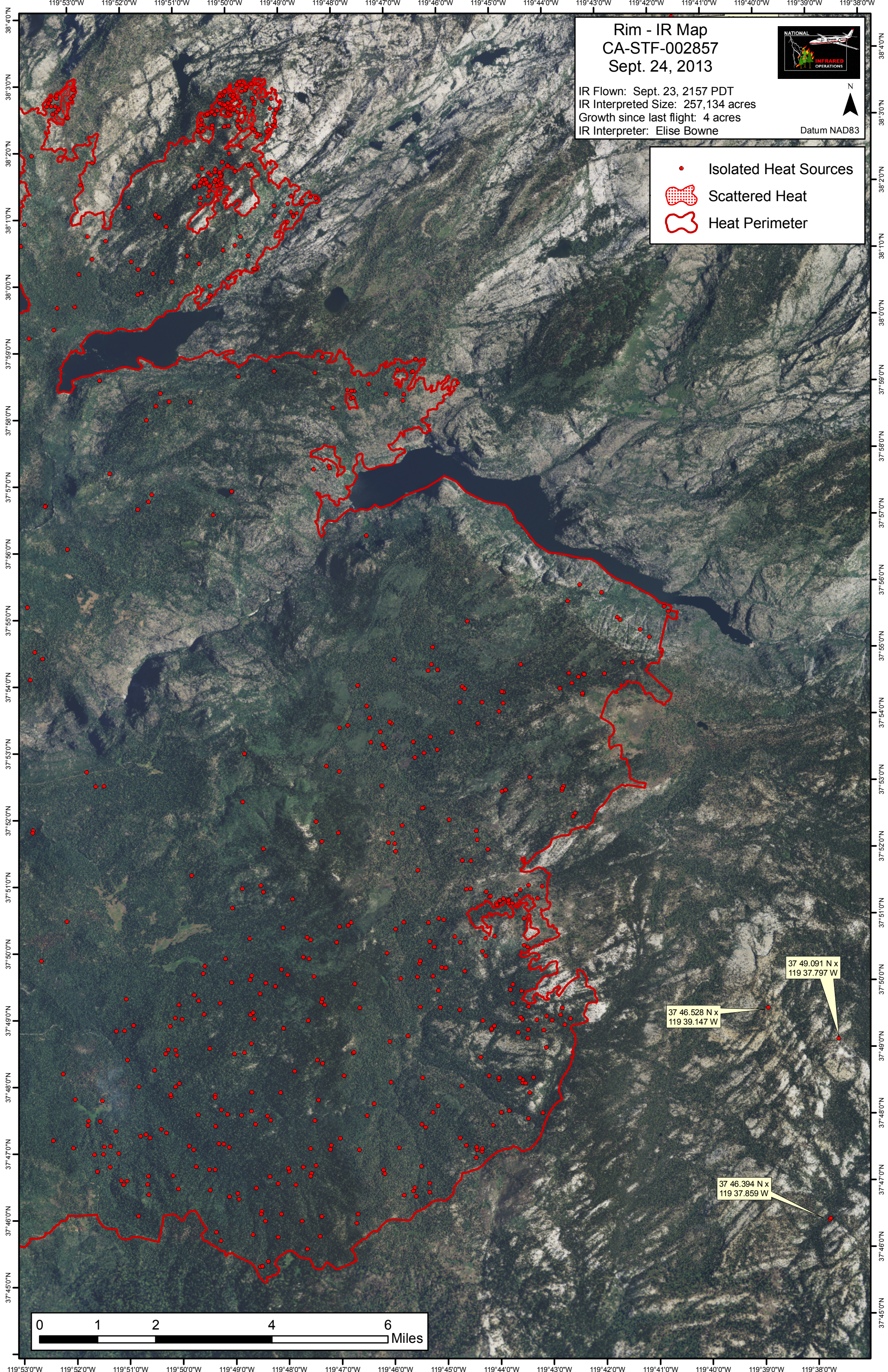
Rim - IR Map
CA-STF-002857
Sept. 24, 2013

IR Flown: Sept. 23, 2157 PDT
IR Interpreted Size: 257,134 acres
Growth since last flight: 4 acres
IR Interpreter: Elise Bowne



Datum NAD83

- Isolated Heat Sources
- Scattered Heat
- Heat Perimeter



37 49.091 N x
119 37.797 W

37 46.528 N x
119 39.147 W

37 46.394 N x
119 37.859 W

