

120°21'W 120°19'W 120°17'W 120°15'W 120°13'W 120°11'W 120°9'W 120°7'W 120°5'W 120°3'W 120°1'W 119°59'W 119°57'W 119°55'W 119°53'W 119°51'W 119°49'W 119°47'W 119°45'W 119°43'W 119°41'W 119°39'W 119°37'W 119°35'W

Rim Fire IR Map CA-STF-002813 Sept 24, 2013

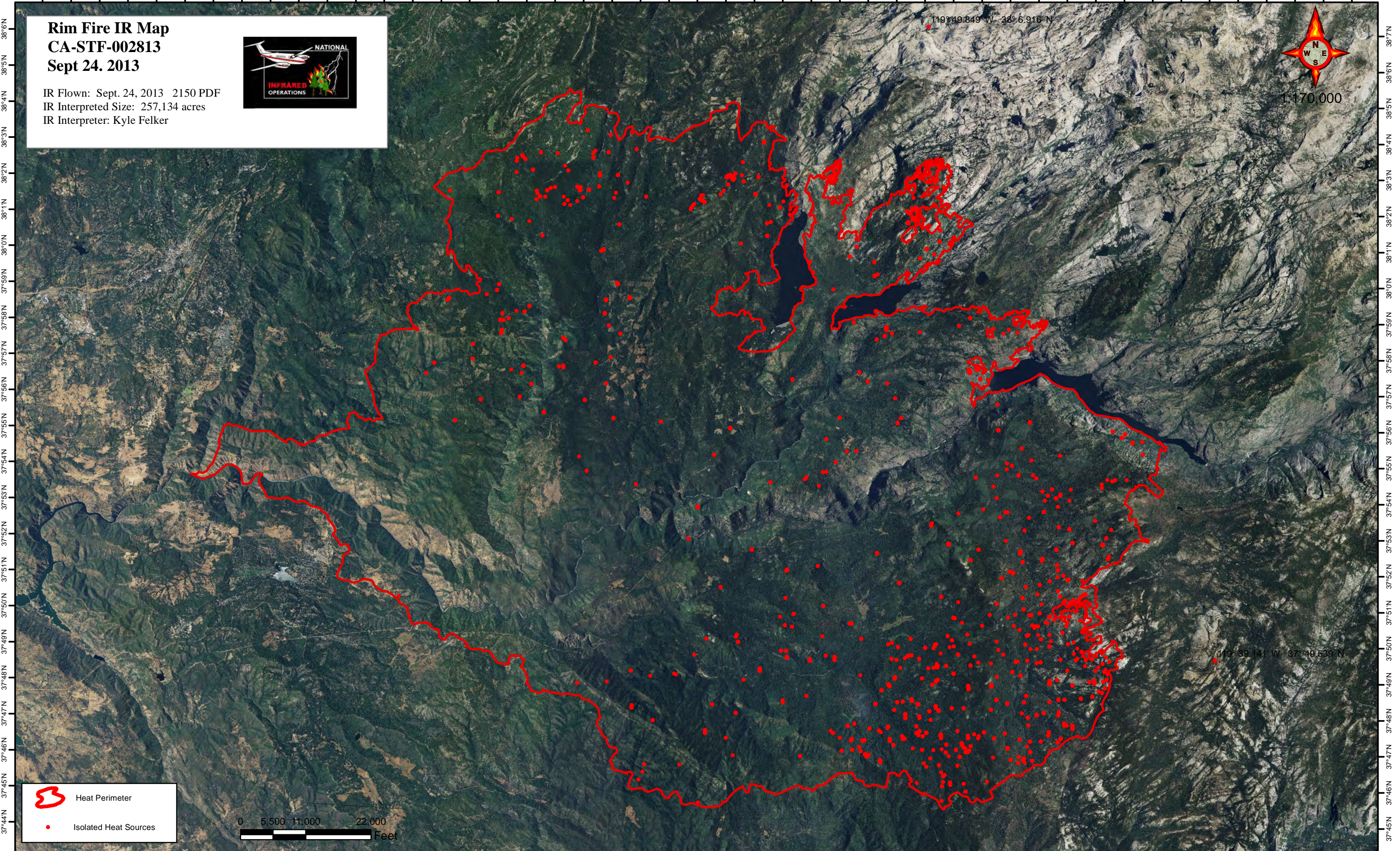
IR Flown: Sept. 24, 2013 2150 PDF
IR Interpreted Size: 257,134 acres
IR Interpreter: Kyle Felker





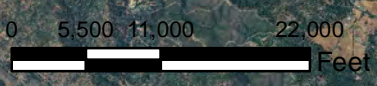
1:170,000

119°49.849' W 38°6.916' N

119°39.141' W 37°49.539' N



-  Heat Perimeter
-  Isolated Heat Sources



120°19'W 120°17'W 120°15'W 120°13'W 120°11'W 120°9'W 120°7'W 120°5'W 120°3'W 120°1'W 119°59'W 119°57'W 119°55'W 119°53'W 119°51'W 119°49'W 119°47'W 119°45'W 119°43'W 119°41'W 119°39'W 119°37'W 119°35'W