

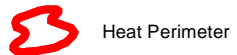
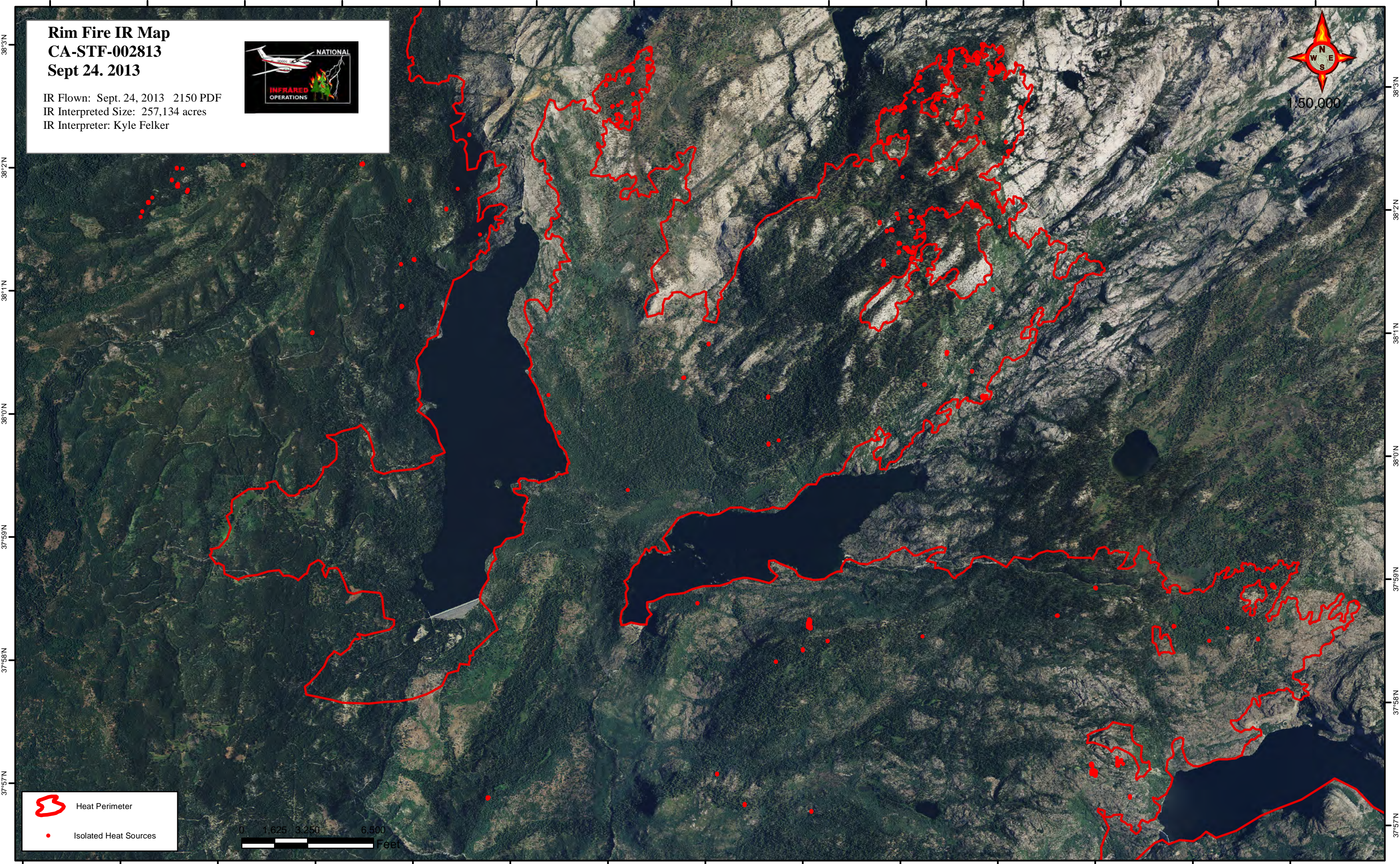
119°59'W 119°58'W 119°57'W 119°56'W 119°55'W 119°54'W 119°53'W 119°52'W 119°51'W 119°50'W 119°49'W 119°48'W 119°47'W 119°46'W

Rim Fire IR Map CA-STF-002813 Sept 24, 2013

IR Flown: Sept. 24, 2013 2150 PDF
IR Interpreted Size: 257,134 acres
IR Interpreter: Kyle Felker



1:50,000



Heat Perimeter



Isolated Heat Sources



119°59'W 119°58'W 119°57'W 119°56'W 119°55'W 119°54'W 119°53'W 119°52'W 119°51'W 119°50'W 119°49'W 119°48'W 119°47'W 119°46'W

38°3'N

38°2'N

38°1'N

38°0'N

37°59'N

37°58'N

37°57'N

38°3'N

38°2'N

38°1'N

38°0'N

37°59'N

37°58'N

37°57'N