

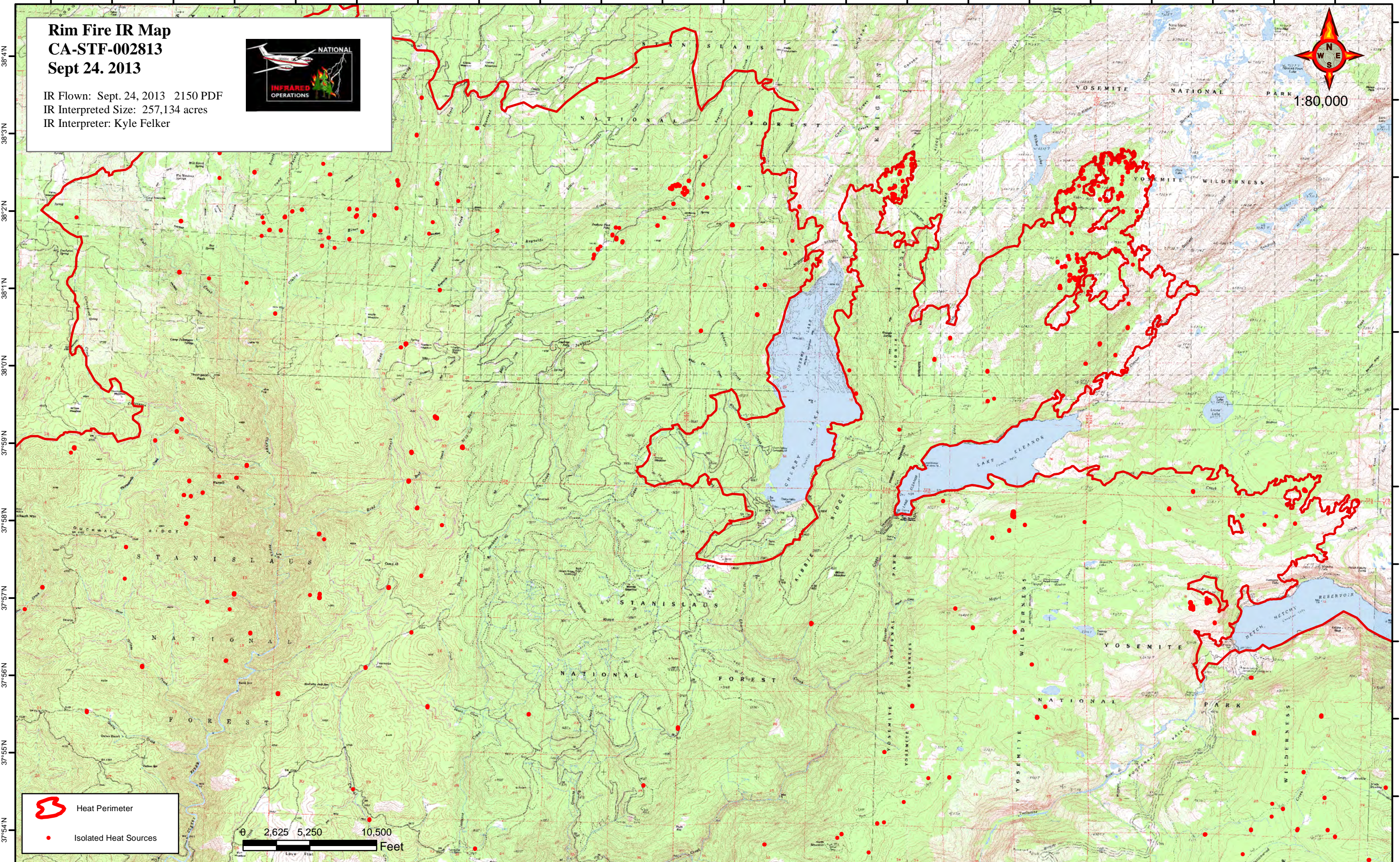
120°7'W 120°6'W 120°5'W 120°4'W 120°3'W 120°2'W 120°1'W 120°0'W 119°59'W 119°58'W 119°57'W 119°56'W 119°55'W 119°54'W 119°53'W 119°52'W 119°51'W 119°50'W 119°49'W 119°48'W 119°47'W 119°46'W



# Rim Fire IR Map CA-STF-002813 Sept 24, 2013

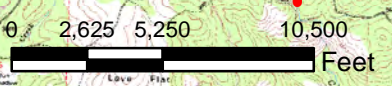
IR Flown: Sept. 24, 2013 2150 PDF  
IR Interpreted Size: 257,134 acres  
IR Interpreter: Kyle Felker



1:80,000



-  Heat Perimeter
-  Isolated Heat Sources



120°7'W 120°6'W 120°5'W 120°4'W 120°3'W 120°2'W 120°1'W 120°0'W 119°59'W 119°58'W 119°57'W 119°56'W 119°55'W 119°54'W 119°53'W 119°52'W 119°51'W 119°50'W 119°49'W 119°48'W 119°47'W 119°46'W 119°45'W

38°4'N  
38°3'N  
38°2'N  
38°1'N  
38°0'N  
37°59'N  
37°58'N  
37°57'N  
37°56'N  
37°55'N  
37°54'N

38°5'N  
38°4'N  
38°3'N  
38°2'N  
38°1'N  
38°0'N  
37°59'N  
37°58'N  
37°57'N  
37°56'N  
37°55'N