

120°19'W 120°17'W 120°15'W 120°13'W 120°11'W 120°9'W 120°8'W 120°7'W 120°6'W 120°5'W 120°4'W 120°3'W 120°2'W 120°1'W 120°0'W 119°59'W 119°57'W 119°55'W 119°53'W 119°51'W 119°49'W 119°47'W 119°45'W 119°43'W 119°41'W 119°39'W 119°37'W

# Rim Fire IR Map

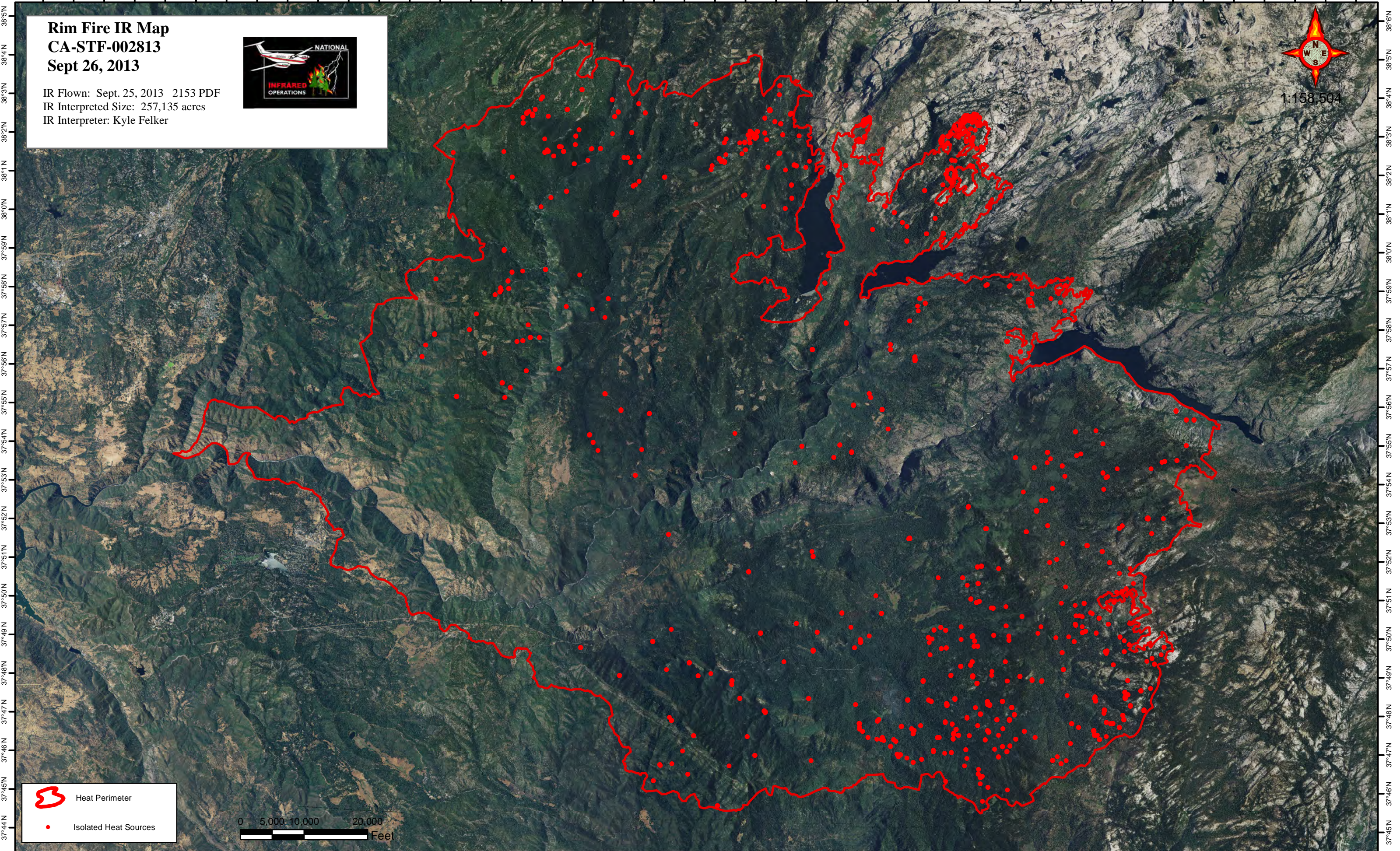
## CA-STF-002813


### Sept 26, 2013


IR Flown: Sept. 25, 2013 2153 PDF  
IR Interpreted Size: 257,135 acres  
IR Interpreter: Kyle Felker

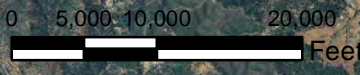


1:158,504



 Heat Perimeter

 Isolated Heat Sources



120°18'W 120°16'W 120°14'W 120°12'W 120°10'W 120°9'W 120°8'W 120°7'W 120°6'W 120°5'W 120°4'W 120°3'W 120°2'W 120°1'W 120°0'W 119°59'W 119°57'W 119°55'W 119°53'W 119°51'W 119°49'W 119°47'W 119°45'W 119°43'W 119°41'W 119°39'W 119°37'W