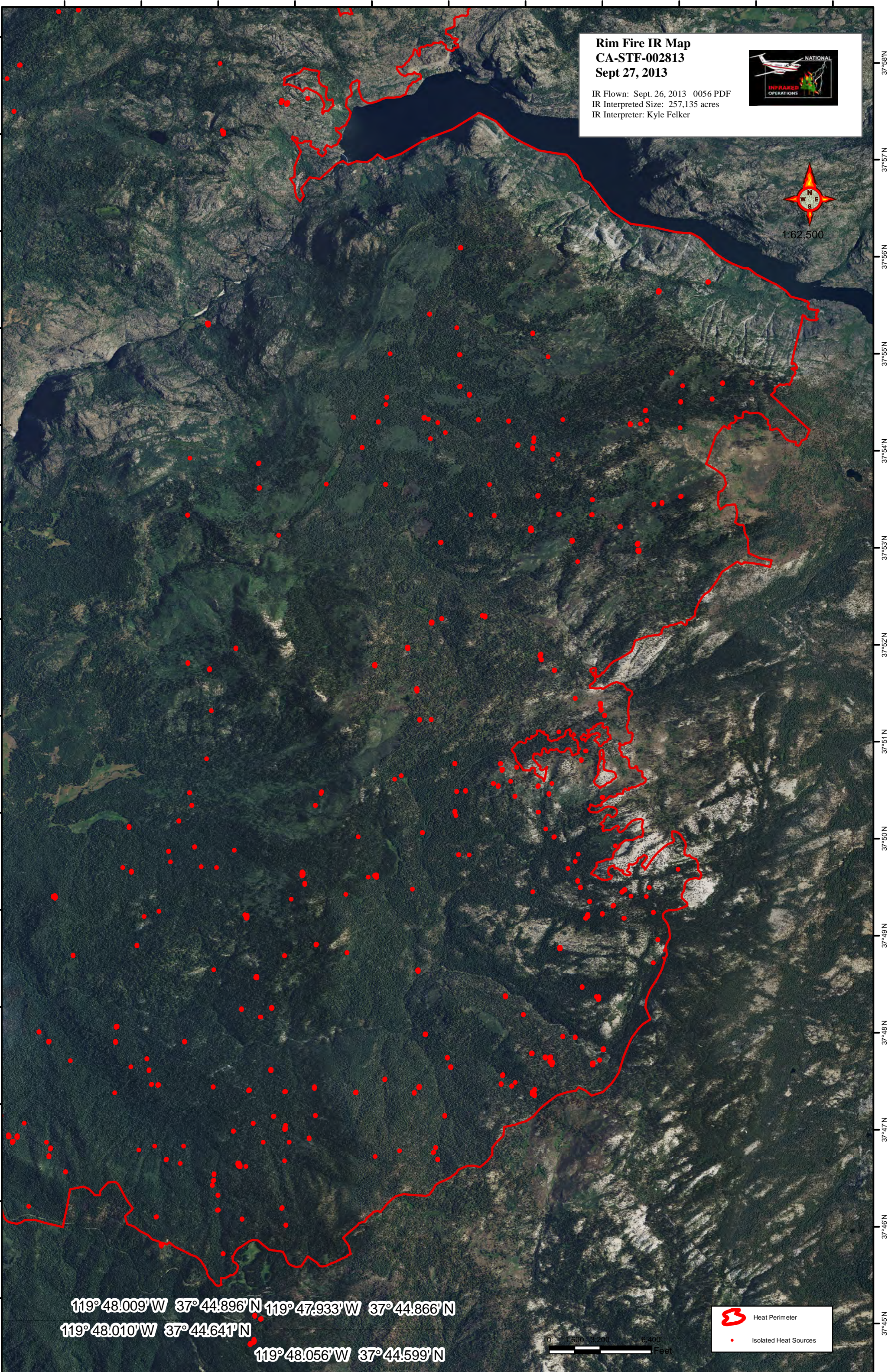


119°51'W 119°50'W 119°49'W 119°48'W 119°47'W 119°46'W 119°45'W 119°44'W 119°43'W 119°42'W 119°41'W



Rim Fire IR Map
CA-STF-002813
Sept 27, 2013

IR Flown: Sept. 26, 2013 0056 PDF
 IR Interpreted Size: 257,135 acres
 IR Interpreter: Kyle Felker

119° 48.009' W 37° 44.896' N 119° 47.933' W 37° 44.866' N
 119° 48.010' W 37° 44.641' N
 119° 48.056' W 37° 44.599' N



-  Heat Perimeter
-  Isolated Heat Sources

119°51'W 119°50'W 119°49'W 119°48'W 119°47'W 119°46'W 119°45'W 119°44'W 119°43'W 119°42'W 119°41'W 119°40'W