
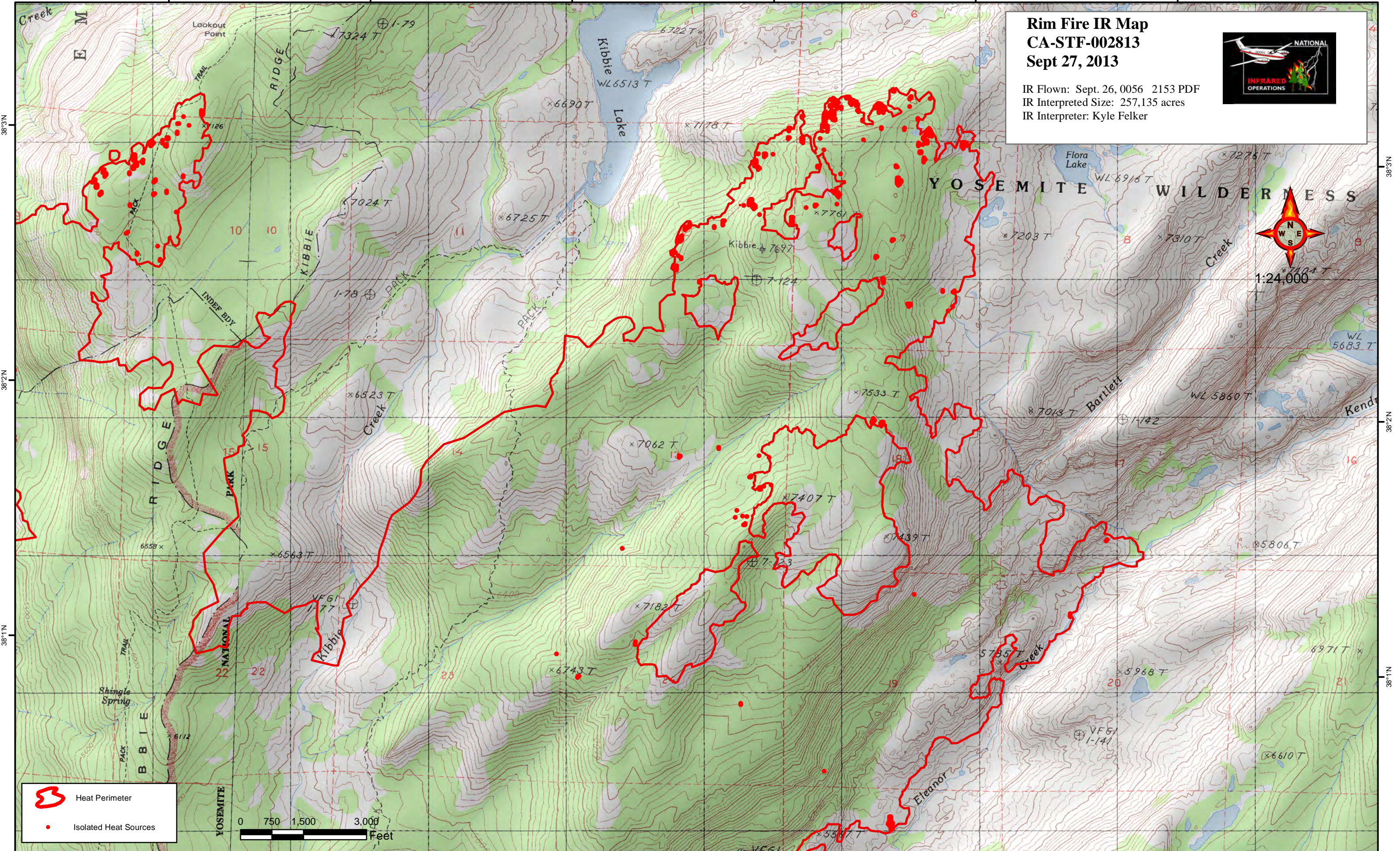




119°53'W 119°52'W 119°51'W 119°50'W 119°49'W 119°48'W

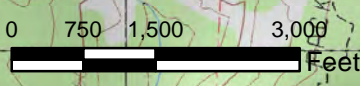
Rim Fire IR Map
CA-STF-002813
Sept 27, 2013

IR Flown: Sept. 26, 0056 2153 PDF
 IR Interpreted Size: 257,135 acres
 IR Interpreter: Kyle Felker

 Heat Perimeter

 Isolated Heat Sources



38°3'N

38°2'N

38°1'N

38°3'N

38°2'N

38°1'N

119°53'W

119°52'W

119°51'W

119°50'W

119°49'W

119°48'W

119°47'W