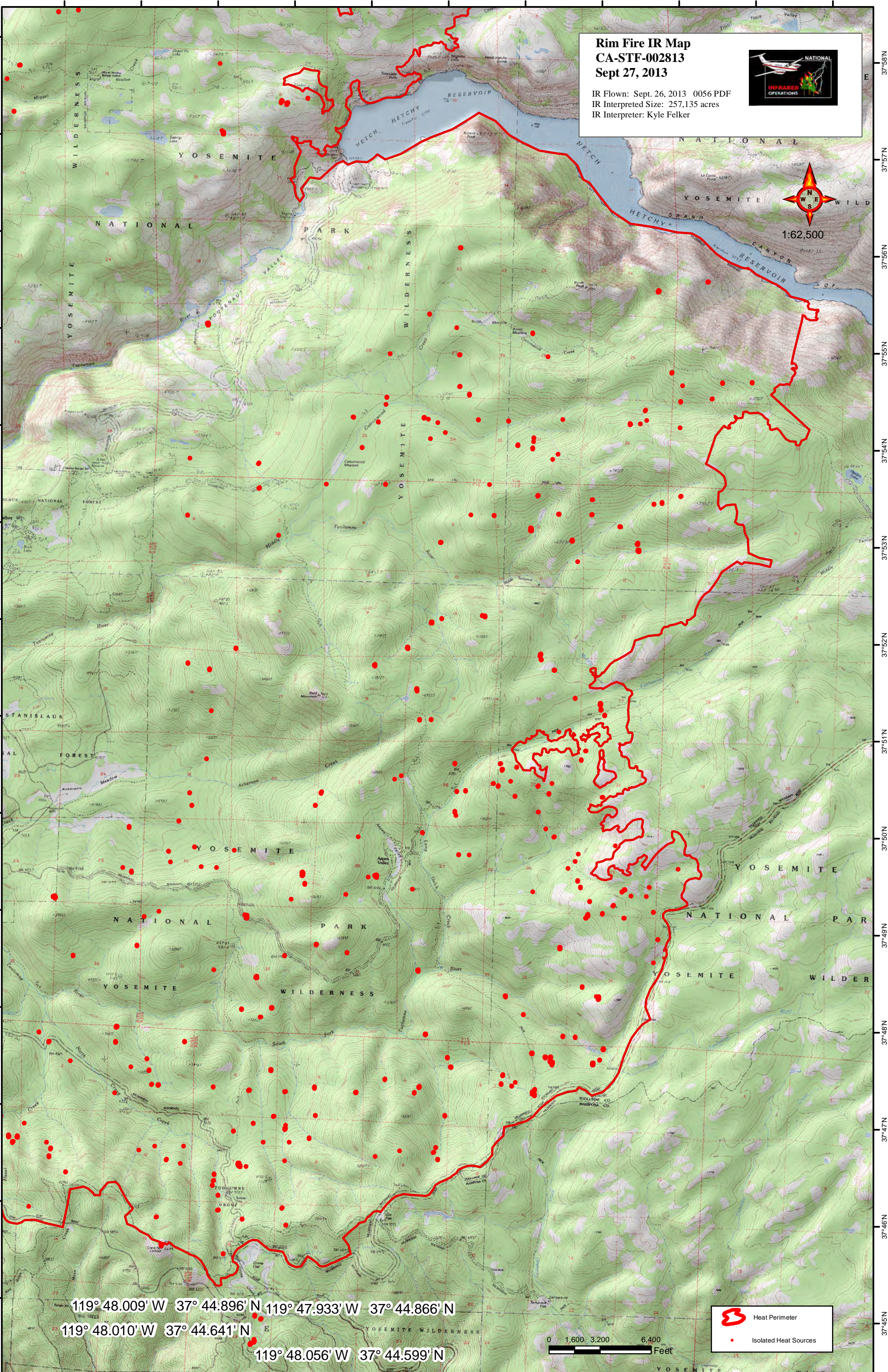


**Rim Fire IR Map  
CA-STF-002813  
Sept 27, 2013**

IR Flown: Sept. 26, 2013 0056 PDF  
IR Interpreted Size: 257,135 acres  
IR Interpreter: Kyle Felker





1:62,500



119° 48.009' W 37° 44.896' N 119° 47.933' W 37° 44.866' N  
119° 48.010' W 37° 44.641' N  
119° 48.056' W 37° 44.599' N

0 1,600 3,200 6,400 Feet

 Heat Perimeter  
 Isolated Heat Sources