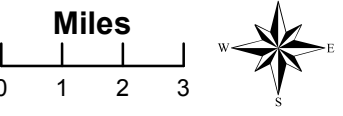


**Rim Incident**  
**CA-STF-002857**  
**Air Operations Map**  
**9/18/2013**

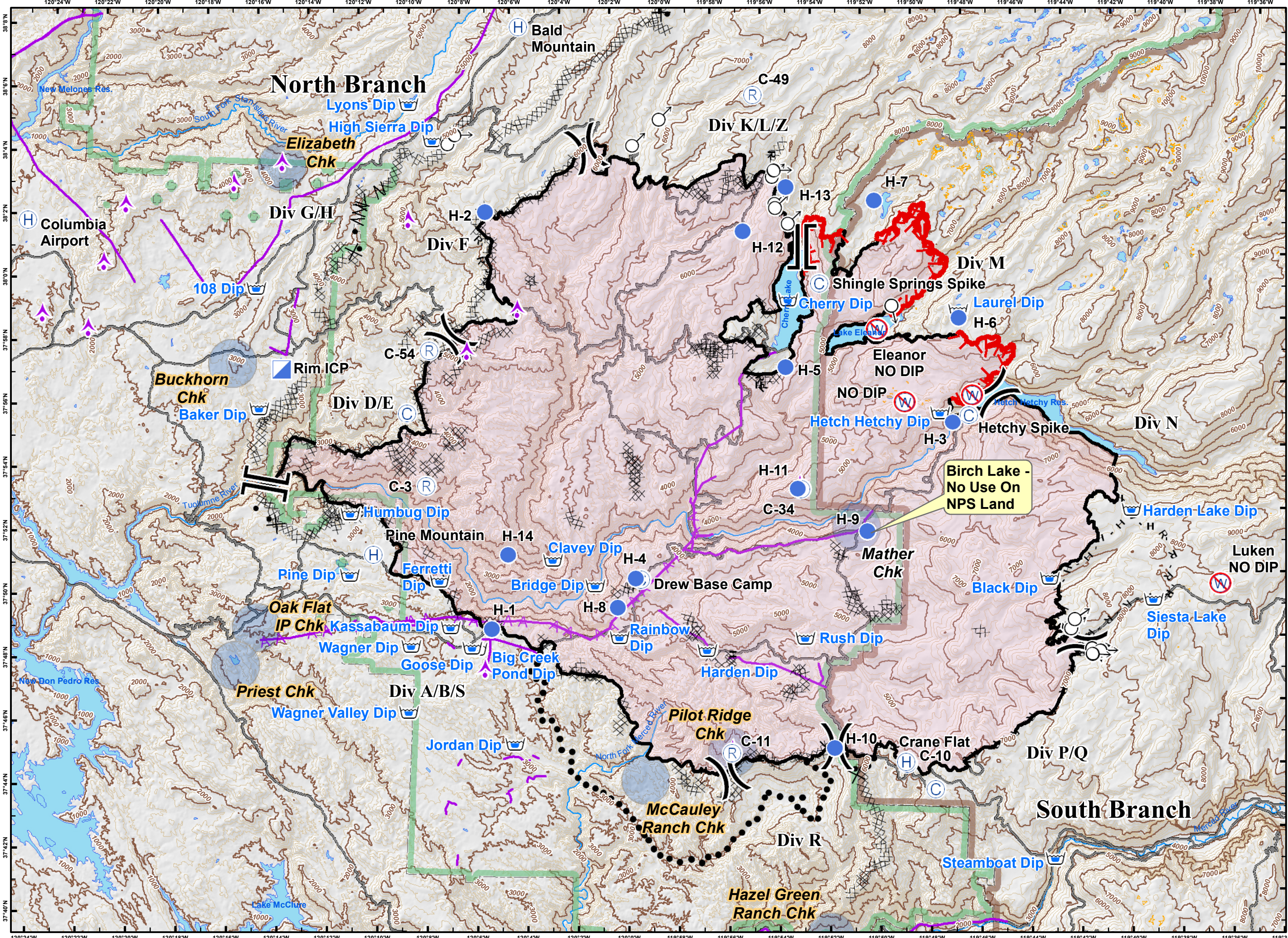
256,895 Acres



- Rim Fire Burned Area
- Branch Break
- Division Break
- Uncontrolled Fire Edge
- Completed Line
- Completed Dozer Line
- H - H Hand Line
- R - R Road as Completed Line
- Line Break Completed
- Proposed Dozer Line
- Planned Secondary Line
- Incident Command Post
- Camp
- Helibase
- Helispot
- Dip Site
- Restricted Water Source
- Repeater
- Contained Spot Fire
- No Dip Lakes
- Distribution Line
- High Voltage Trans. Line
- Towers & Tanks
- Flight Checkpoints
- Major Roads



NAD83 UTM Zone 11N  
 Contour interval 200 ft.



RIM INCIDENT PILOT LOCATION INFORMATION – <u>DIP SITES &amp; SPIKE CAMPS</u> Version: 09/18/2013						
Name	Type	Latitude	Longitude	Elev.	IGE/OGE	Remarks
108 Dip		N37° 59.910'	W120° 15.680'	3000'		
Baker Dip		N37° 56.120'	W120° 15.390'	2295'		
Beardsley Dip		N38° 12.662'	W120° 03.685'	3450'		5 mi. NE of Bald Mtn. HB
Big Creek Pond Dip		N37° 48.778'	W120° 06.399'			
Black Dip		N37° 51.560'	W119° 43.740'	6500'		
Bridge Dip		N37° 50.890'	W120° 01.801'	1535'		
Cherry Dip		N38° 00.093'	W119° 54.493'	4800'		
Clavey Dip		N37° 51.645'	W120° 03.523'	1900'		
Donell Dip		N38° 20.199'	W119° 56.481'	5000'		22 mi. N of Cherry Lk.
Ferretti Dip		N37° 50.880'	W120° 07.997'	3010'		
Funks Dip		N38° 02.889'	W120° 05.839'			
Goose Dip		N37° 48.799'	W120° 06.604'	3050'		
Harden Dip		N37° 48.980'	W119° 57.271'	3540'		Near Harden Retardant Plant
Harden Lake Dip		N37° 53.813'	W119° 40.567'	7500'		S of E end of Hetch Hetchy, NOT Harden Flat
Hetch Hetchy Dip		N37° 56.978'	W119° 47.188'	3865'		
High Sierra Dip		N38° 04.753'	W120° 08.872'			
Humbug Dip		N37° 52.898'	W120° 11.637'	2580'		
Jordan Dip		N37° 45.804'	W120° 04.770'	2590'		= Love Dip
Kassabaum Dip		N37° 49.413'	W120° 07.500'	2895'		
Laurel Dip		N37° 59.939'	W119° 47.706'	6700'		E of Lake Eleanor
Lyons Dip		N38° 05.870'	W120° 09.880'	4215'		
Pine Dip		N37° 50.966'	W120° 11.584'	2550'		
Rainbow Dip		N37° 49.287'	W120° 00.772'	2725'		
Rush Dip		N37° 49.460'	W119° 53.384'	4100'		East of Harden Flat
Siesta Lake Dip		N37° 51.005'	W119° 39.595'	7947'		
Steamboat Dip		N37° 42.734'	W119° 43.185'	3298'		
Wagner Dip		N37° 46.700'	W120° 09.030'	3220'		= Square Dip
Wagner Valley Dip		N37° 46.701'	W120° 09.039'			
Name	Type	Latitude	Longitude	Elev.	IGE/OGE	Remarks
Hetchy Spike Camp		N37° 56.658'	W119° 47.142'			
Shingle Spring Spike Camp		N38° 00.658'	W119° 53.272'			

RIM INCIDENT PILOT LOCATION INFORMATION – <u>HELIBASES &amp; HELISPOTS</u> Version: 09/18/2013						
Name	Type	Latitude	Longitude	Elev.	IGE/OGE	Remarks
Columbia Airport HB		N38° 01.845'	W120° 25.046'	2100'	HIGE	E-W grass runway
Crane Flat Lookout HB		N37° 45.602'	W119° 49.207'	6650'	HIGE	Yosemite National Park
Bald Mountain HB		N38° 08.394'	W120° 05.674'	5780'	HIGE	
Mariposa HB		N37° 30.639'	W120° 02.381'	2220'	HIGE	Mariposa Airport
Pine Mountain HB		N37° 51.697'	W120° 10.688'	2925'	HIGE	
Name	Type	Latitude	Longitude	Elev.	IGE/OGE	Remarks
H-1		N37° 49.340'	W120° 05.022'	3195'	HIGE	Groveland R.D.
H-2		N38° 02.568'	W120° 06.689'			Fayhe Meadow; DP-2
H-3		N37° 56.420'	W119° 47.790'			Hetch Hetchy
H-4	2	N37° 51.169'	W120° 00.209'	3545'		Drew Meadow
H-5		N37° 58.000'	W119° 54.500'			Cherry Lake Dam
H-6	2	N37° 59.712'	W119° 47.674'	6500'		
H-7	2	N38° 03.339'	W119° 51.194'	6700'		Laurel; Kibbie Lake
H-8	2	N37° 50.232'	W120° 00.882'	3300'		Powerlines ¼ mi. S; needs dust abatement; black snags
H-9	2	N37° 52.896'	W119° 51.042'	4500'		Grass; powerlines; house
H-10	2	N37° 45.705'	W119° 53.673'	5200'		Needs dust abatement
H-11	2	N37° 54.161'	W119° 53.864'	5740'	HOGE	North Mountain; Repeater
H-12	2	N38° 02.383'	W119° 56.650'	6000'		Needs dust abatement
H-13	2	N38° 03.671'	W119° 54.738'	7000'		West Cherry Lookout
H-14	3	N37° 51.793'	W120° 05.301'			Fire point of origin

RIM INCIDENT PILOT REPORTING INFORMATION – <u>CHECKPOINTS</u> Version: 09/18/2013						
Name	Type	Latitude	Longitude	Elev.	IGE/OGE	Remarks
Buckhorn IP	FW	N37° 57.530'	W120° 16.538'	5000'		
Elizabeth Peak CP	RW	N38° 03.783'	W120° 14.844'	5500'		From Columbia to 108 N of Twain Harte
Hazel Green Ranch CP	RW	N37° 40.050'	W119° 52.010'	4500'		Rotor wing from McCauley Ranch
Mather CP	RW	N37° 53.000'	W119° 51.501'	4500'		Rotor wing from Hazel Green Ranch
McCauley Ranch CP	RW	N37° 44.820'	W119° 59.560'	4500'		Rotor wing from Priest CP
Oak Flat IP	FW	N37° 49.210'	W120° 15.210'	5000'		
Pilot Ridge CP	RW	N37° 45.770'	W119° 56.150'	6500'		
Priest CP	RW	N37° 48.000'	W120° 16.000'	3500'		Rotor wing from Columbia to Div. S/R