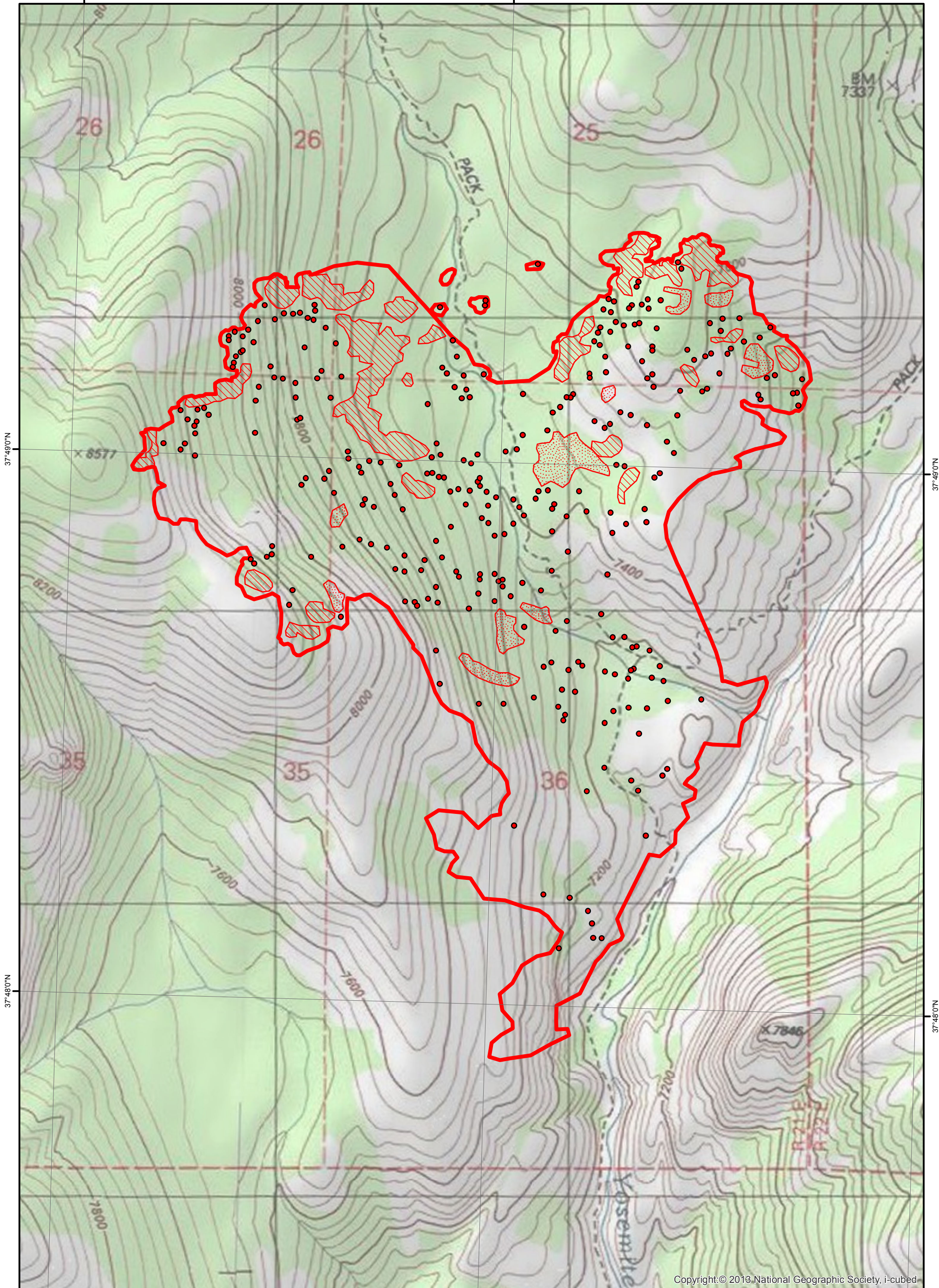


119°38'0"W

119°37'0"W







Copyright: © 2013, National Geographic Society, i-cubed

119°38'0"W

119°37'0"W

119°36'0"W


-  Heat Perimeter
-  Intense Heat Areas
-  Scattered Heat Areas
-  Isolated Heat Sources

NAD 1983 UTM Zone 11N

## Dark Hole Fire Infrared Heat Sources

1:12,000

0      0.125      0.25      0.5 Miles




IR Interpreter: Brian Monroe  
 IR interpreted acres: 727  
 Date: 8/1/2014  
 Time received the Image: 2207 hrs