

119°38'0"W

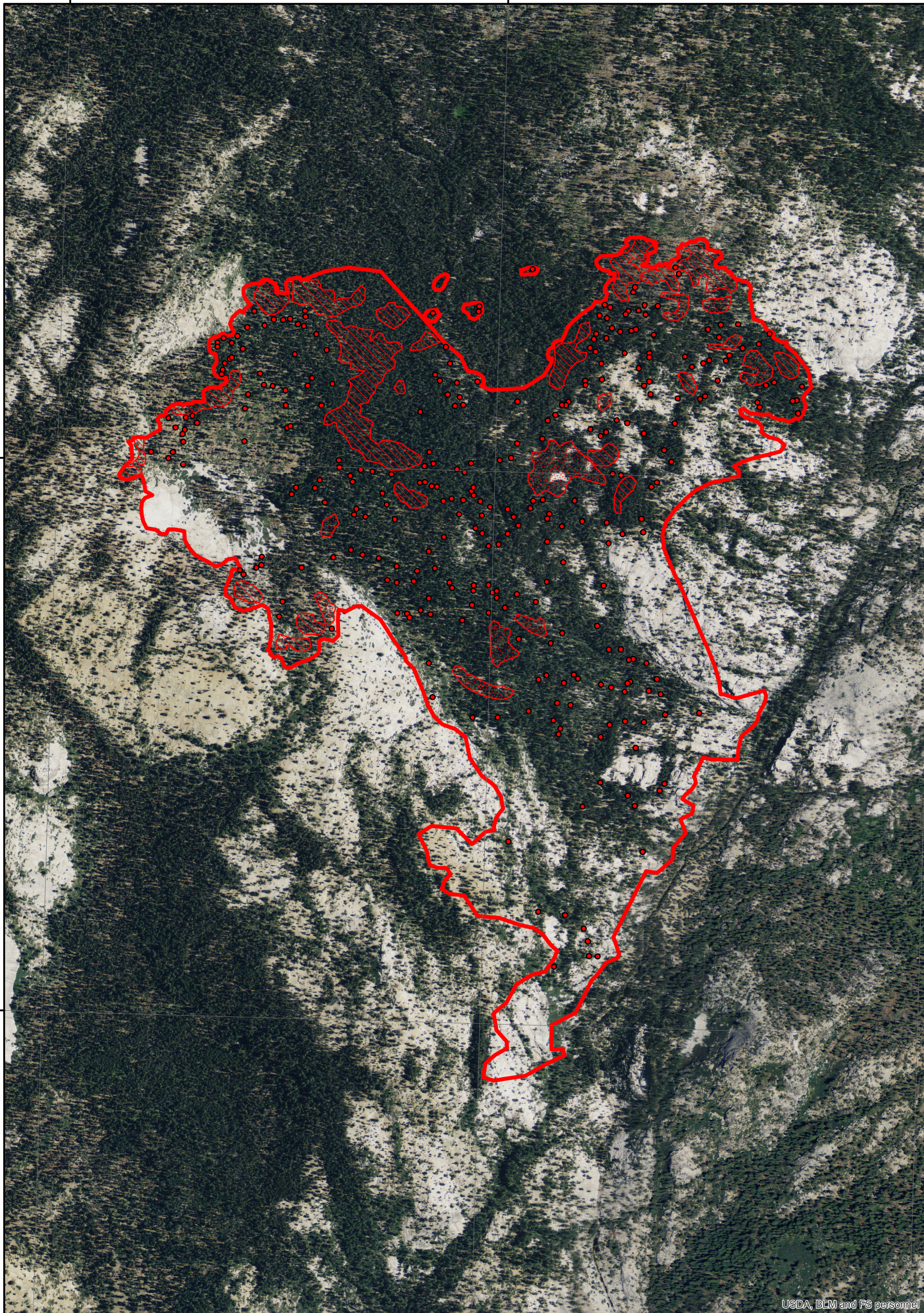
119°37'0"W

37°49'0"N

37°49'0"N

37°48'0"N

37°48'0"N



USDA, BLM and FS personnel

119°38'0"W

119°37'0"W

119°36'0"W



Heat Perimeter

Intense Heat Areas

Scattered Heat Areas

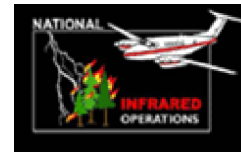
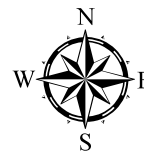
Isolated Heat Sources

NAD 1983 UTM Zone 11N

# Dark Hole Fire Infrared Heat Sources

1:12,000

0 0.125 0.25 0.5 Miles



IR Interpreter: Brian Monroe

IR interpreted acres: 727

Date: 8/1/2014

Time received the Image: 2207 hrs