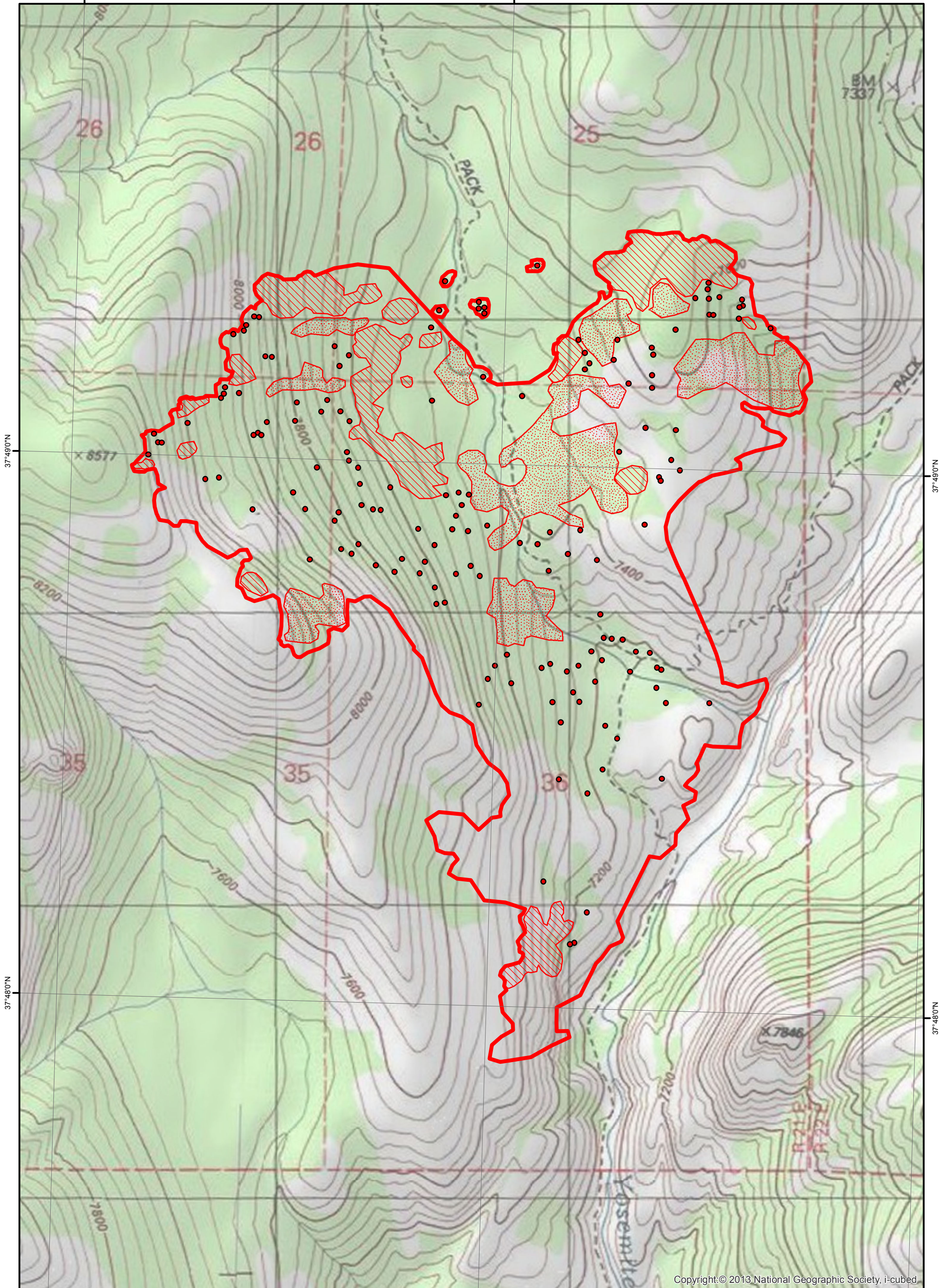


119°38'0"W

119°37'0"W







Copyright: © 2013 National Geographic Society, i-cubed

119°38'0"W

119°37'0"W

119°36'0"W


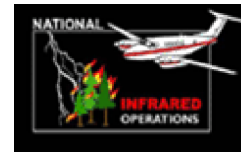
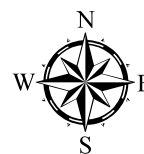
-  Heat Perimeter
-  Intense Heat Areas
-  Scattered Heat Areas
-  Isolated Heat Sources

NAD 1983 UTM Zone 11N

Dark Hole Fire Infrared Heat Sources

1:12,000

0 0.125 0.25 0.5 Miles

IR Interpreter: Brian Monroe
 IR interpreted acres: 738
 Date: 8/2/2014
 Time received the Image: 0245 hrs