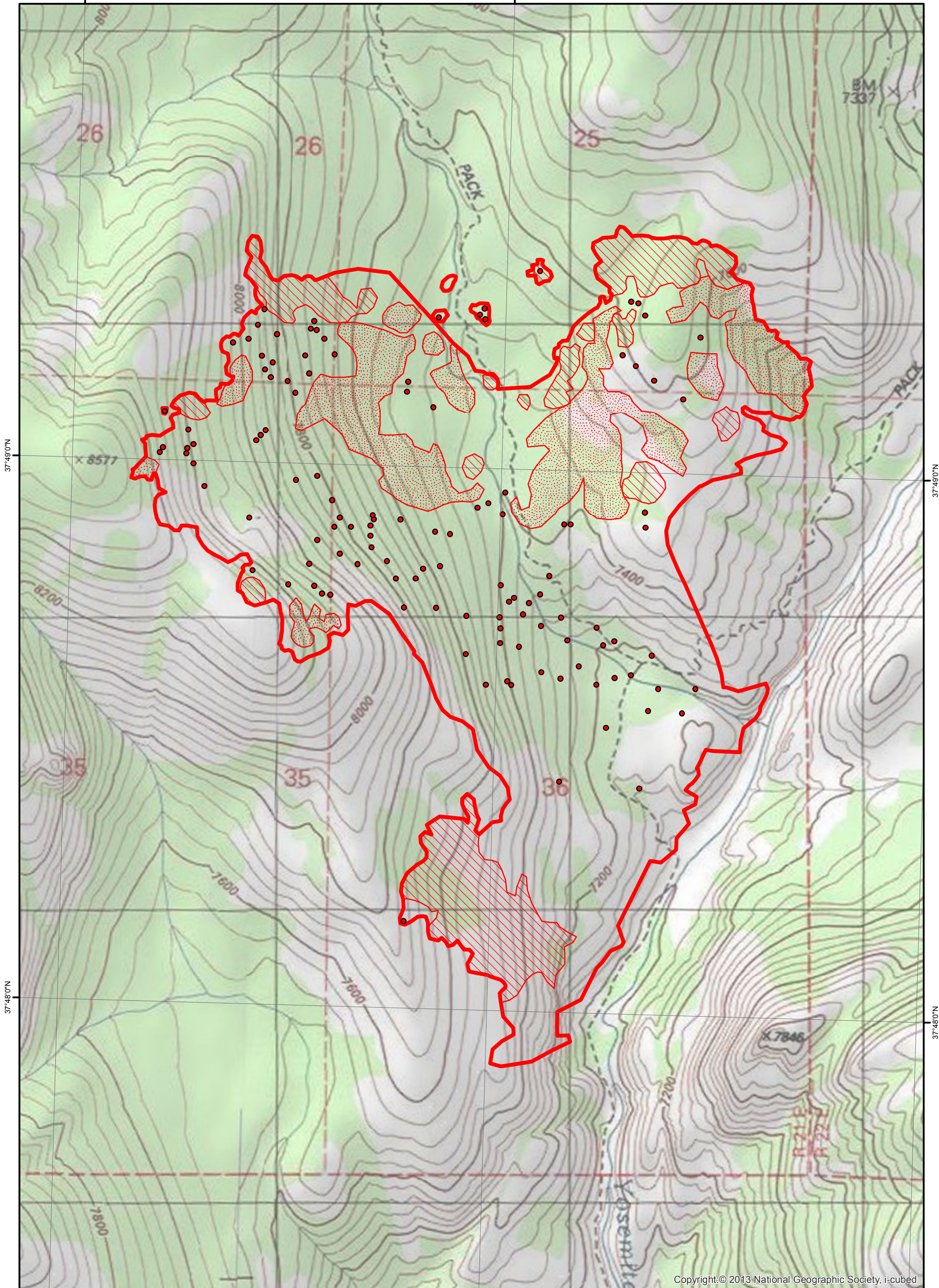


119°38'0"W

119°37'0"W



Copyright:© 2013 National Geographic Society, i-cubed

119°38'0"W

119°37'0"W





119°36'0"W

37°48'0"N

37°48'0"N

37°49'0"N

37°49'0"N


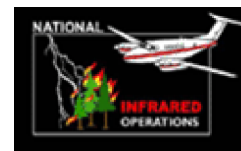
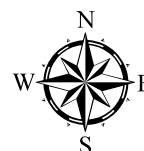
-  Heat Perimeter
-  Intense Heat Areas
-  Scattered Heat Areas
-  Isolated Heat Sources

NAD 1983 UTM Zone 11N

Dark Hole Fire Infrared Heat Sources

1:12,000

0 0.125 0.25 0.5 Miles

IR Interpreter: Brian Monroe
 IR interpreted acres: 738
 Date: 8/3/2014
 Time received the Image: 2235 hrs