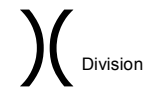


# Etiwanda Fire

CA-BDF-006646

May 2, 2014  
0600

Air Ops



Division



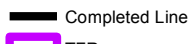
Helibase



Other



Uncontrolled Fire Edge



Completed Line



TFR

San Savine Basin

34 8' 510"

-117 29' 678"

Victoria Basin

34 7' 832"

-117 30' 356"

Lower Day Basin

34 7' 832"

-117 30' 356"

Rialto Helibase

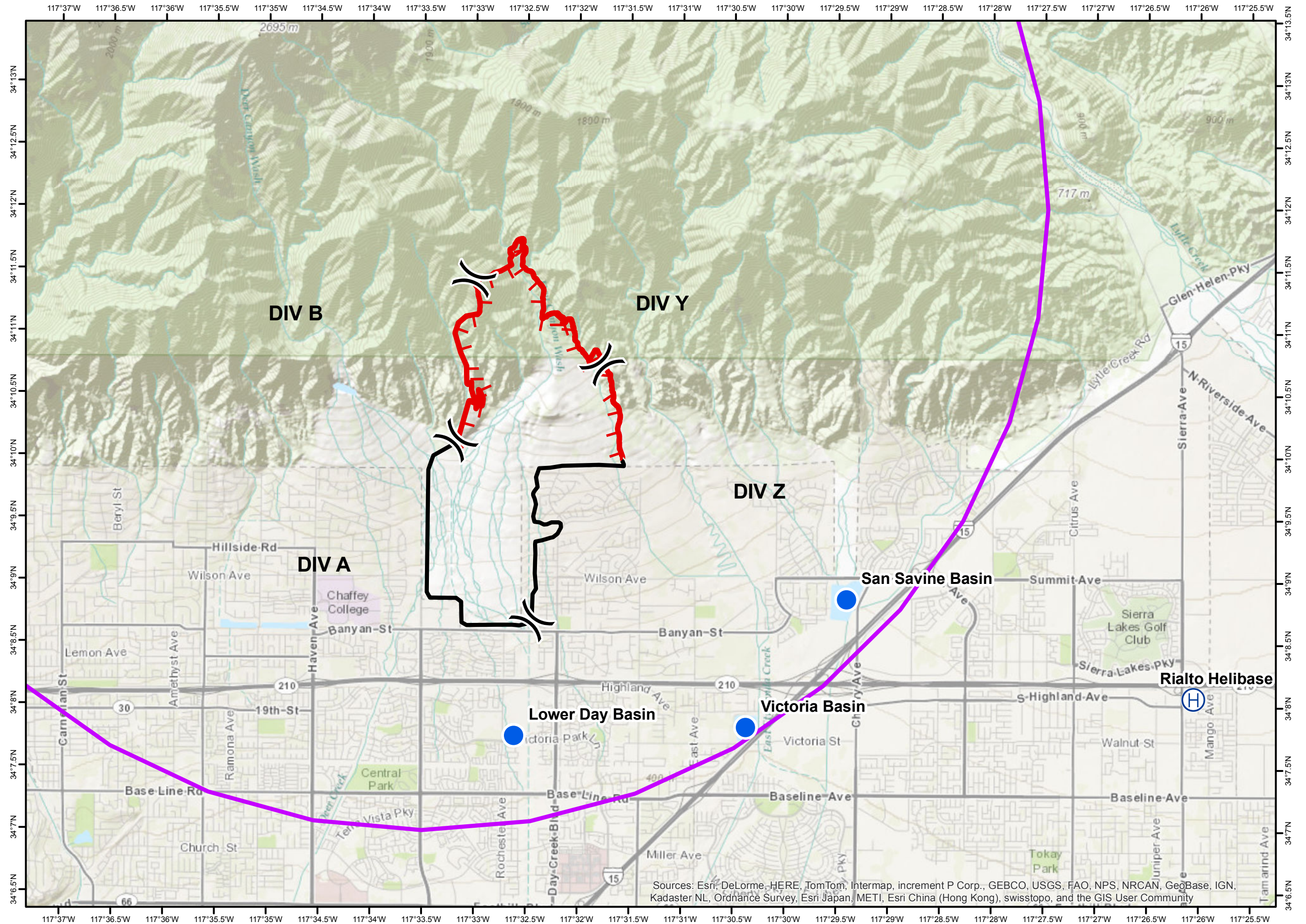
34 7' 644"

-117 24' 123"

N



0 0.6 1.2 Miles



Sources: Esri, DeLorme, HERE, TomTom, Intermap, increment P Corp., GEBCO, USGS, FAO, NPS, NRCAN, GeoBase, IGN, Kadaster NL, Ordnance Survey, Esri Japan, METI, Esri China (Hong Kong), swisstopo, and the GIS User Community