

Etiwanda Fire

CA-BDF-006646

May 3, 2014
1000

Air Ops



Division



Drop Point



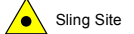
Helibase



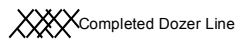
Helispot



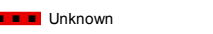
Other



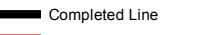
Sling Site



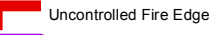
Completed Dozer Line



Unknown



Completed Line



Uncontrolled Fire Edge



TFR

San Savine Basin

34 8' 510"
-117 29' 678"

Victoria Basin

34 7' 832"
-117 30' 356"

Lower Day Basin

34 7' 832"
-117 30' 356"

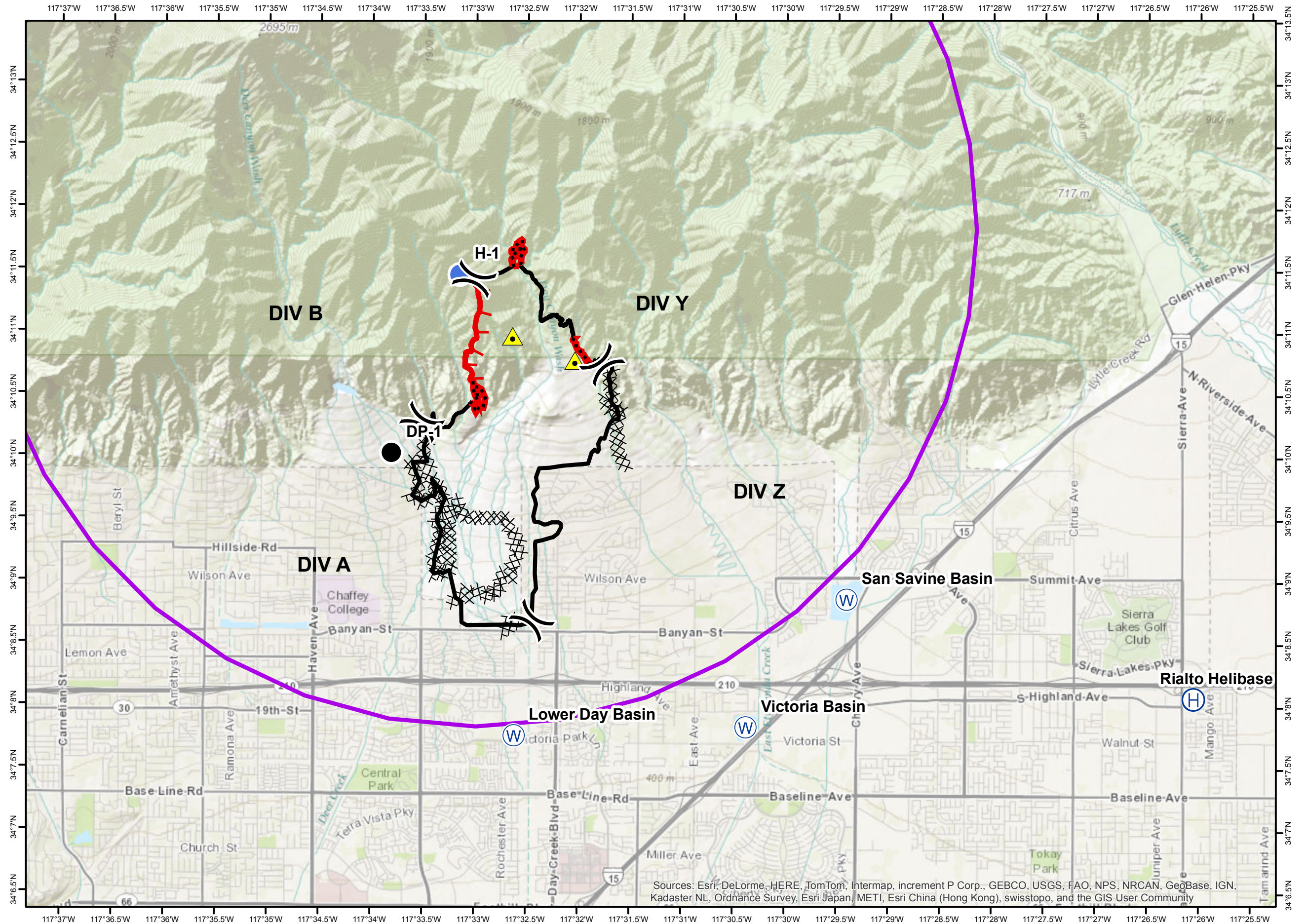
Rialto Helibase

34 7' 644"
-117 24' 123"

N



0 0.6 1.2
Miles



Sources: Esri, DeLorme, HERE, TomTom, Intermap, increment P Corp., GEBCO, USGS, FAO, NPS, NRCAN, GeoBase, IGN, Kadaster NL, Ordnance Survey, Esri Japan, METI, Esri China (Hong Kong), swisstopo, and the GIS User Community