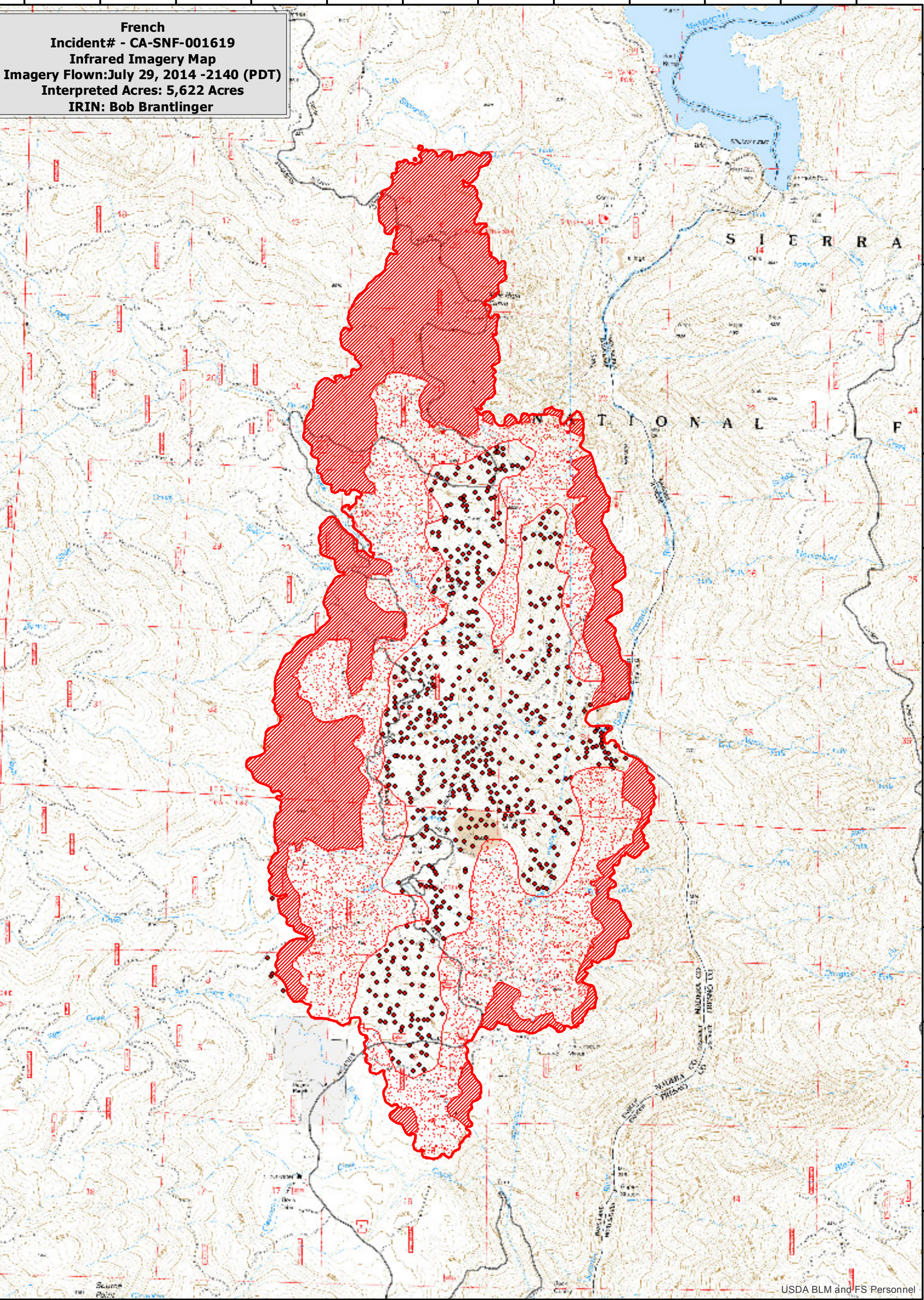


119°24'0"W 119°23'30"W 119°23'0"W 119°22'30"W 119°22'0"W 119°21'30"W 119°21'0"W 119°20'30"W 119°20'0"W 119°19'30"W 119°19'0"W 119°18'30"W



French
Incident# - CA-SNF-001619
Infrared Imagery Map
Imagery Flown: July 29, 2014 -2140 (PDT)
Interpreted Acres: 5,622 Acres
IRIN: Bob Brantlinger





37°20'0"N
37°19'30"N
37°19'0"N
37°18'30"N
37°18'0"N
37°17'30"N
37°17'0"N
37°16'30"N
37°16'0"N
37°15'30"N
37°15'0"N
37°14'30"N
37°14'0"N
37°13'30"N

37°20'0"N
37°19'30"N
37°19'0"N
37°18'30"N
37°18'0"N
37°17'30"N
37°17'0"N
37°16'30"N
37°16'0"N
37°15'30"N
37°15'0"N
37°14'30"N
37°14'0"N
37°13'30"N

119°23'30"W 119°23'0"W 119°22'30"W 119°22'0"W 119°21'30"W 119°21'0"W 119°20'30"W 119°20'0"W 119°19'30"W 119°19'0"W 119°18'30"W 119°18'0"W

USDA BLM and FS Personnel

Legend

-  **Heat Perimeter**
-  **Intense Heat**
-  **Isolated Heat Source**
-  **Scattered Heat Source**

