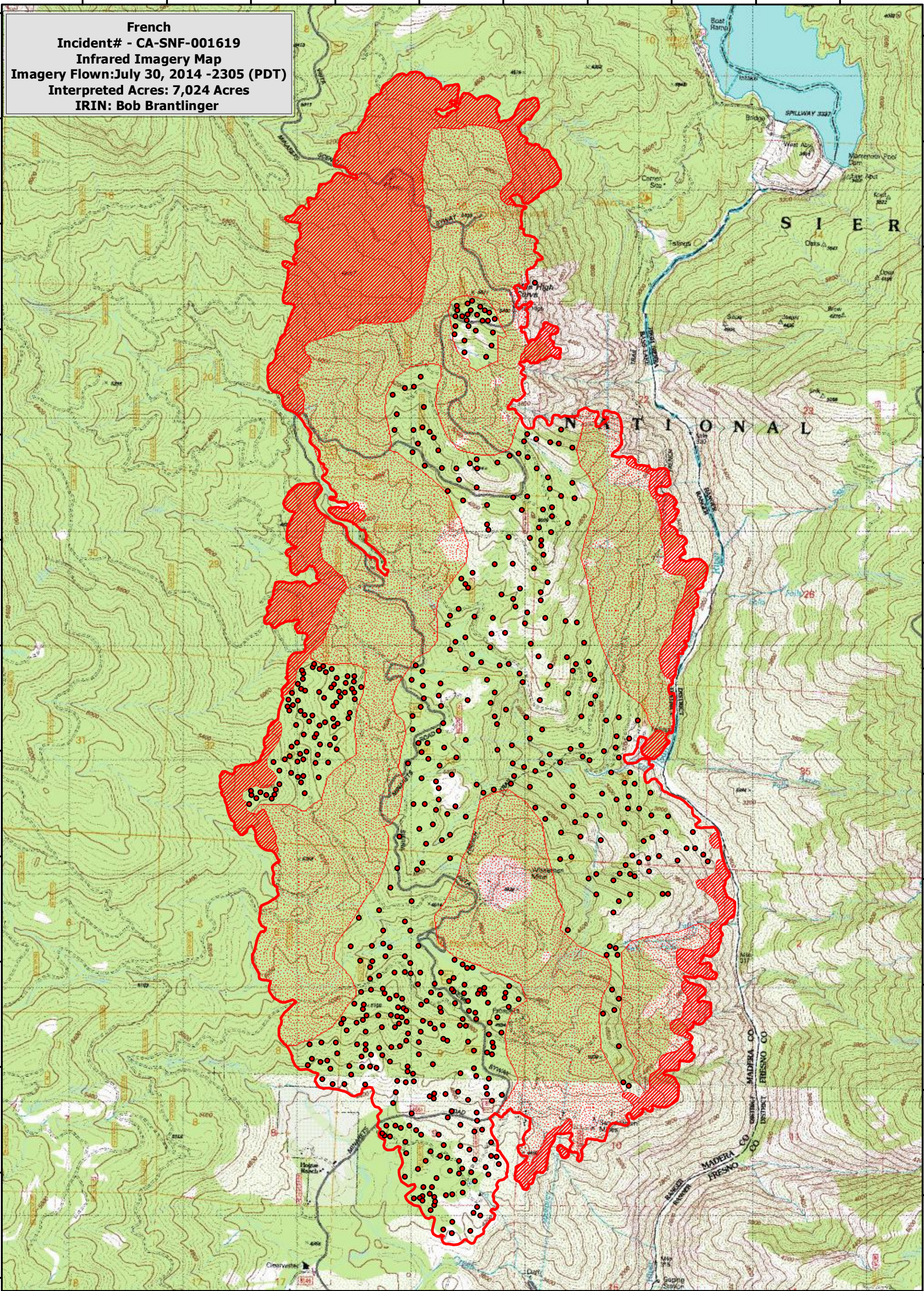






119°23'30"W 119°23'0"W 119°22'30"W 119°22'0"W 119°21'30"W 119°21'0"W 119°20'30"W 119°20'0"W 119°19'30"W 119°19'0"W



119°23'30"W 119°23'0"W 119°22'30"W 119°22'0"W 119°21'30"W 119°21'0"W 119°20'30"W 119°20'0"W 119°19'30"W 119°19'0"W

French
Incident# - CA-SNF-001619
Infrared Imagery Map
Imagery Flown: July 30, 2014 - 2305 (PDT)
Interpreted Acres: 7,024 Acres
IRIN: Bob Brantlinger

Legend

-  **Heat Perimeter**
-  **Intense Heat**
-  **Isolated Heat Source**
-  **Scattered Heat Source**

