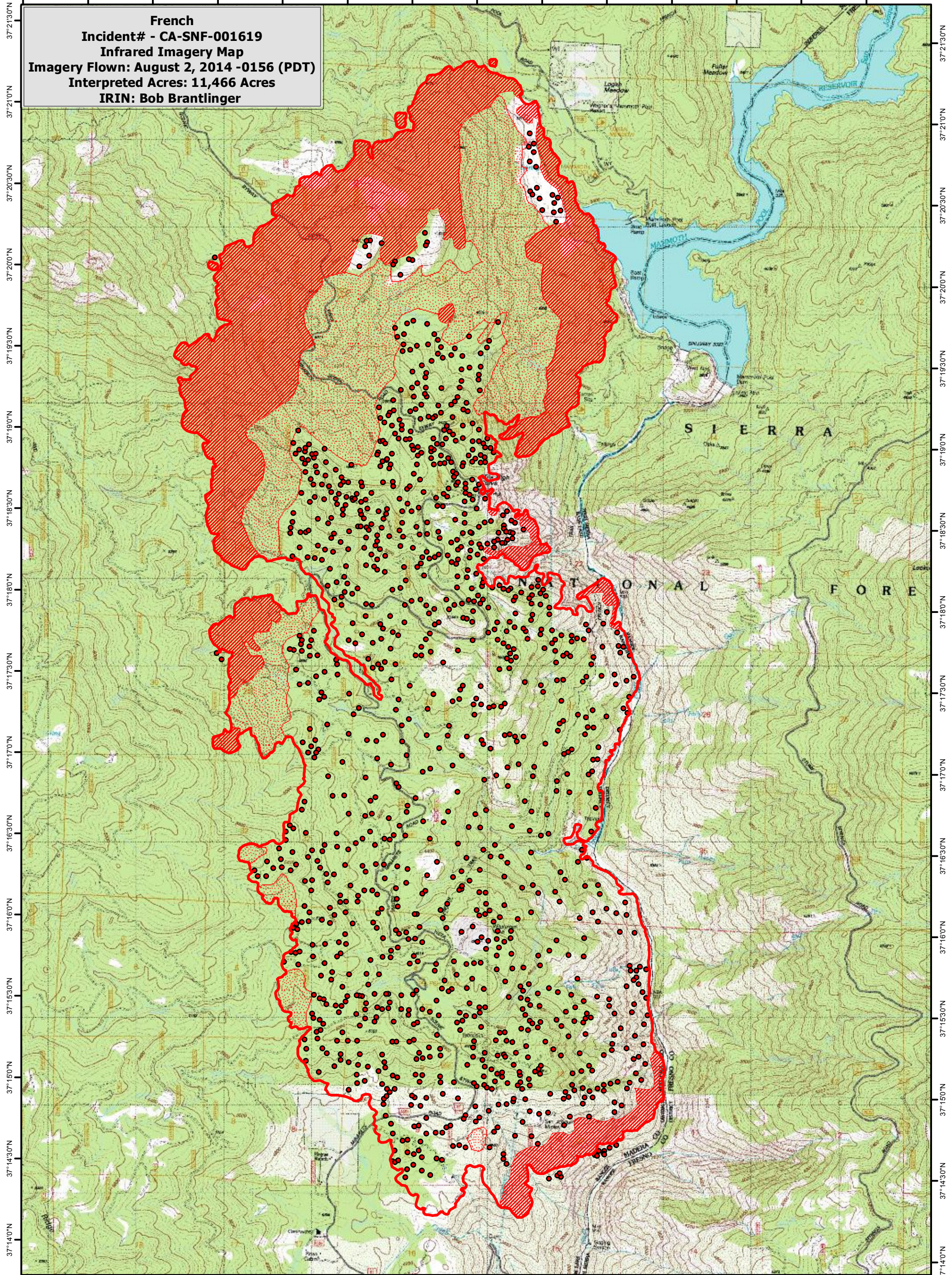






119°24'30"W 119°24'0"W 119°23'30"W 119°23'0"W 119°22'30"W 119°22'0"W 119°21'30"W 119°21'0"W 119°20'30"W 119°20'0"W 119°19'30"W 119°19'0"W 119°18'30"W 119°18'0"W



37°21'30"N 37°21'0"N 37°20'30"N 37°20'0"N 37°19'30"N 37°19'0"N 37°18'30"N 37°18'0"N 37°17'30"N 37°17'0"N 37°16'30"N 37°16'0"N 37°15'30"N 37°15'0"N 37°14'30"N 37°14'0"N

French
Incident# - CA-SNF-001619
Infrared Imagery Map
Imagery Flown: August 2, 2014 -0156 (PDT)
Interpreted Acres: 11,466 Acres
IRIN: Bob Brantlinger

Legend

-  **Heat Perimeter**
-  **Intense Heat**
-  **Isolated Heat Source**
-  **Scattered Heat Source**

