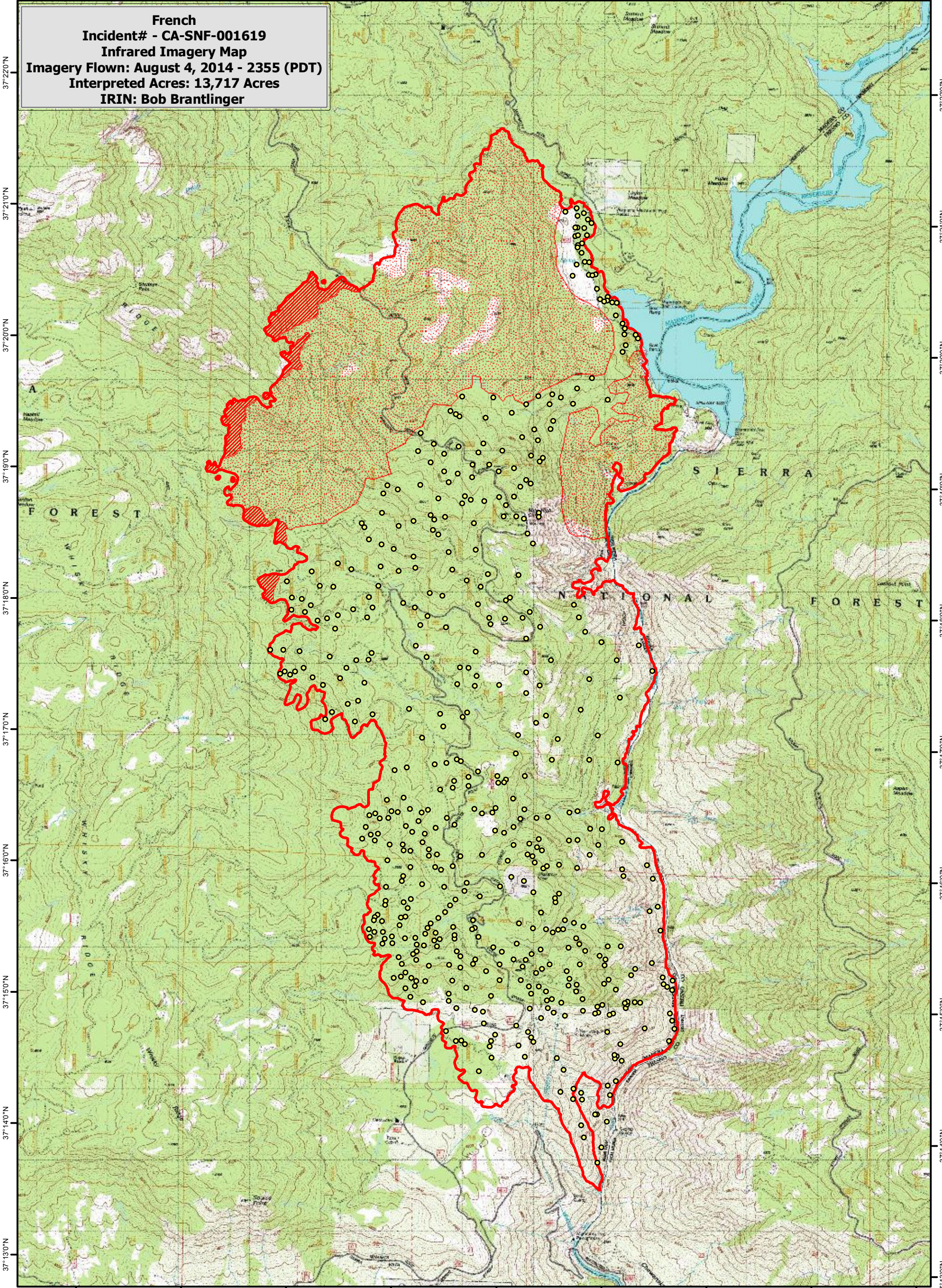


119°25'0"W 119°24'0"W 119°23'0"W 119°22'0"W 119°21'0"W 119°20'0"W 119°19'0"W 119°18'0"W

French
Incident# - CA-SNF-001619
Infrared Imagery Map
Imagery Flown: August 4, 2014 - 2355 (PDT)
Interpreted Acres: 13,717 Acres
IRIN: Bob Brantlinger







37°22'0"N
37°21'0"N
37°20'0"N
37°19'0"N
37°18'0"N
37°17'0"N
37°16'0"N
37°15'0"N
37°14'0"N
37°13'0"N

37°22'0"N
37°21'0"N
37°20'0"N
37°19'0"N
37°18'0"N
37°17'0"N
37°16'0"N
37°15'0"N
37°14'0"N
37°13'0"N

119°25'0"W 119°24'0"W 119°23'0"W 119°22'0"W 119°21'0"W 119°20'0"W 119°19'0"W 119°18'0"W 119°17'0"W

Legend

-  **Heat Perimeter**
-  **Intense Heat**
-  **Isolated Heat Source**
-  **Scattered Heat Source**

