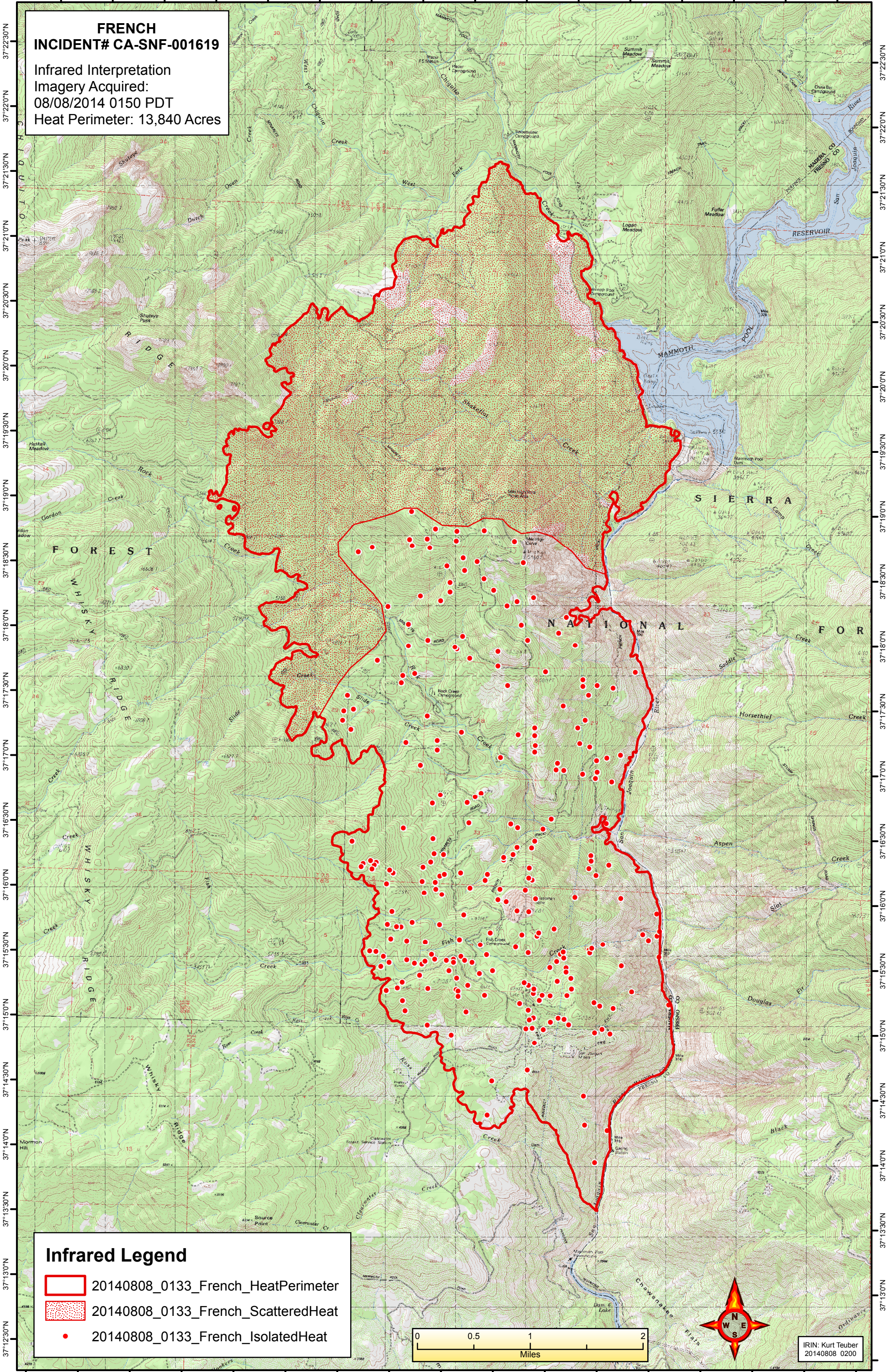

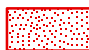



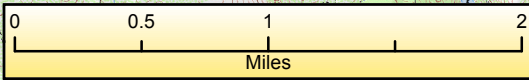
119°25'30"W 119°25'0"W 119°24'30"W 119°24'0"W 119°23'30"W 119°23'0"W 119°22'30"W 119°22'0"W 119°21'30"W 119°21'0"W 119°20'30"W 119°20'0"W 119°19'30"W 119°19'0"W 119°18'30"W 119°18'0"W

**FRENCH
INCIDENT# CA-SNF-001619**
Infrared Interpretation
Imagery Acquired:
08/08/2014 0150 PDT
Heat Perimeter: 13,840 Acres



Infrared Legend

-  20140808_0133_French_HeatPerimeter
-  20140808_0133_French_ScatteredHeat
-  20140808_0133_French_IsolatedHeat



IRIN: Kurt Teuber
20140808 0200

119°25'30"W 119°25'0"W 119°24'30"W 119°24'0"W 119°23'30"W 119°23'0"W 119°22'30"W 119°22'0"W 119°21'30"W 119°21'0"W 119°20'30"W 119°20'0"W 119°19'30"W 119°19'0"W 119°18'30"W 119°18'0"W 119°17'30"W