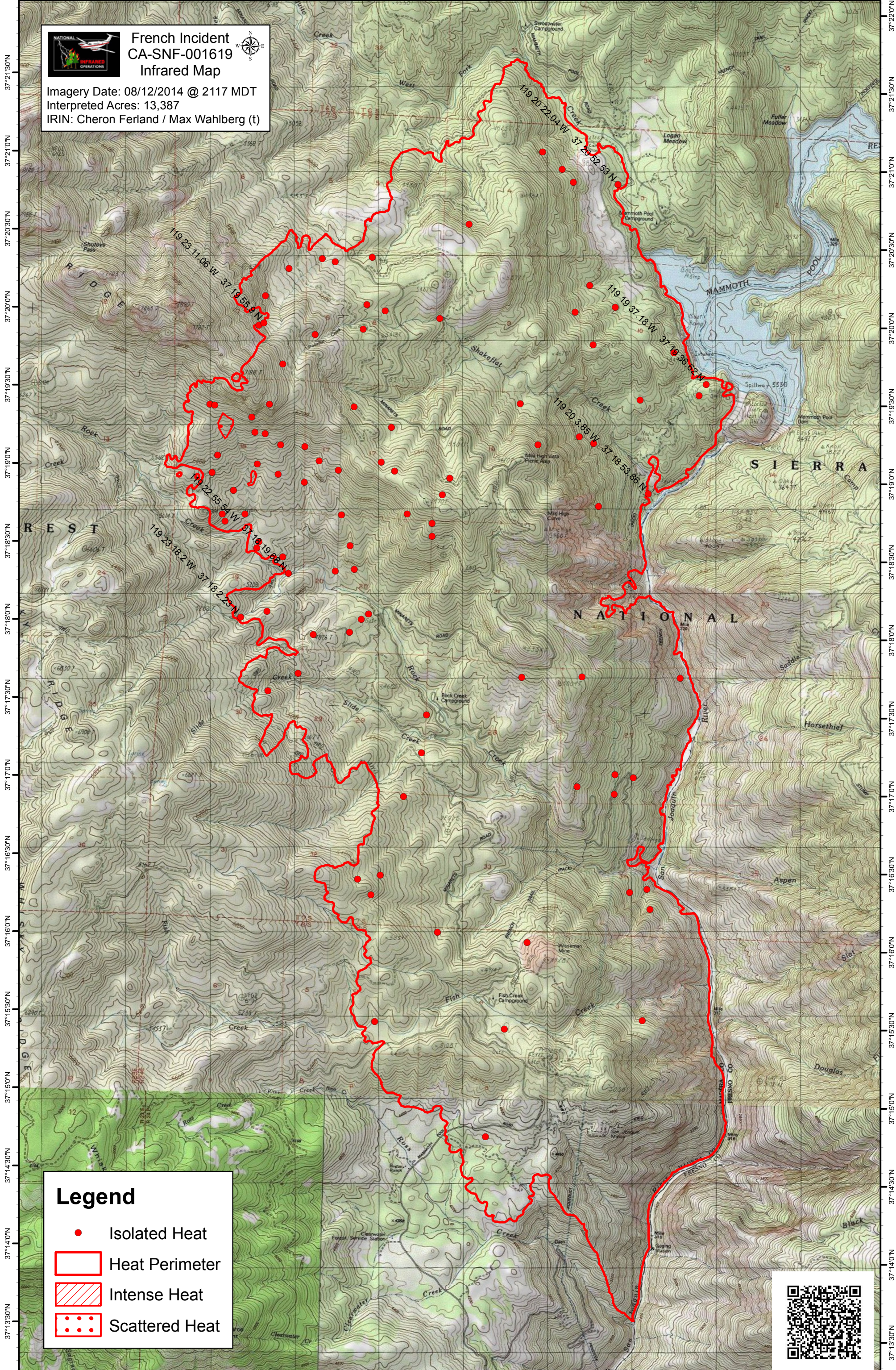


119°25'0"W 119°24'30"W 119°24'0"W 119°23'30"W 119°23'0"W 119°22'30"W 119°22'0"W 119°21'30"W 119°21'0"W 119°20'30"W 119°20'0"W 119°19'30"W 119°19'0"W 119°18'30"W



French Incident
CA-SNF-001619
Infrared Map

Imagery Date: 08/12/2014 @ 2117 MDT
 Interpreted Acres: 13,387
 IRIN: Cheron Ferland / Max Wahlberg (t)

Legend

- Isolated Heat
- Heat Perimeter
- Intense Heat
- Scattered Heat



119°24'30"W 119°24'0"W 119°23'30"W 119°23'0"W 119°22'30"W 119°22'0"W 119°21'30"W 119°21'0"W 119°20'30"W 119°20'0"W 119°19'30"W 119°19'0"W 119°18'30"W