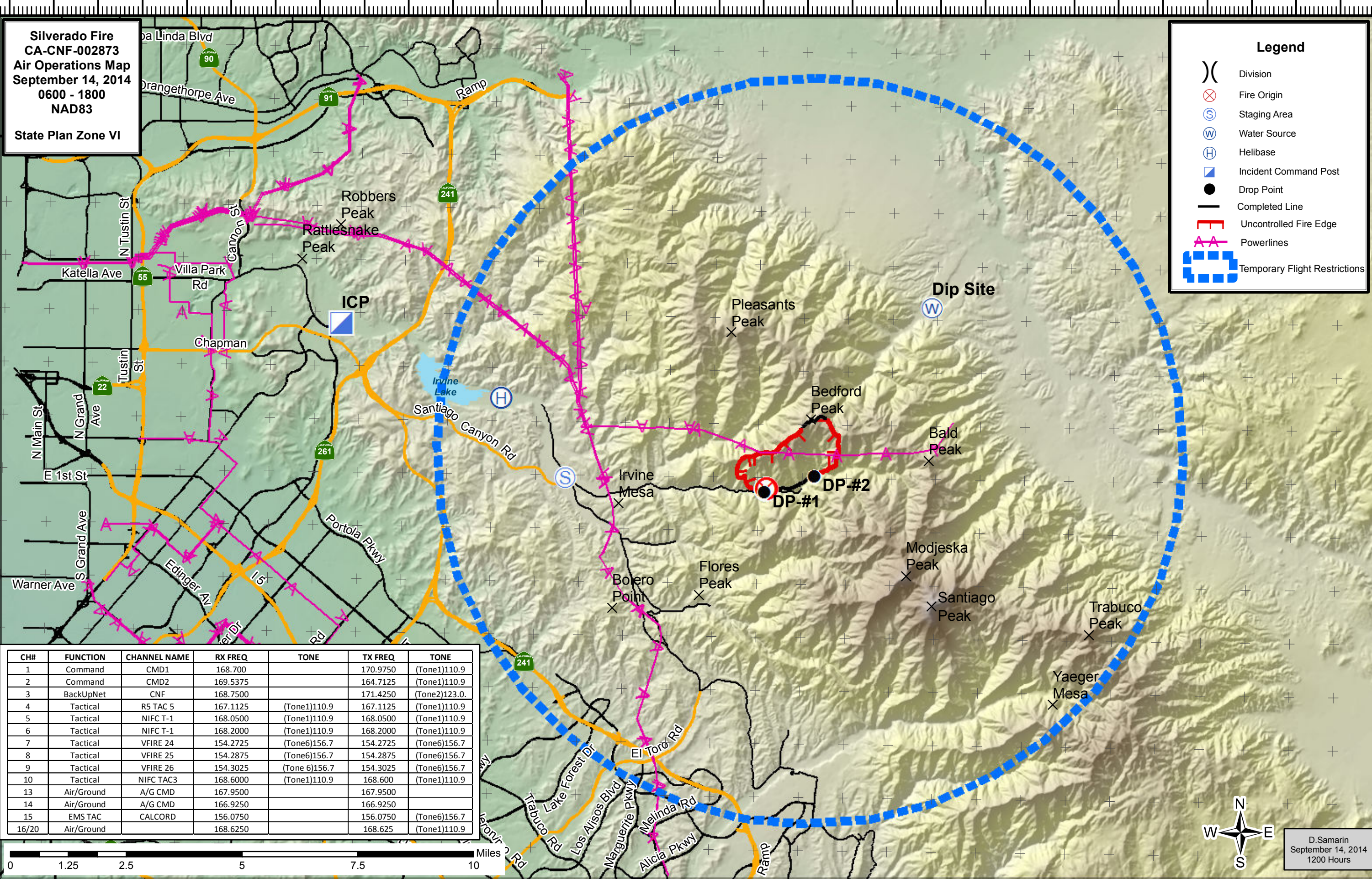


117°53'W 117°51'W 117°49'W 117°47'W 117°45'W 117°43'W 117°41'W 117°39'W 117°37'W 117°35'W 117°33'W 117°31'W 117°29'W 117°27'W 117°25'W 117°23'W

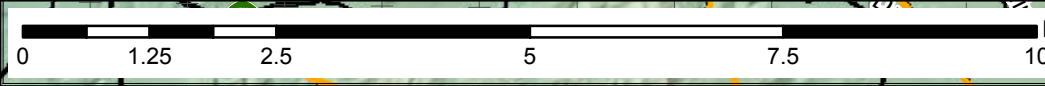
Silverado Fire
CA-CNF-002873
Air Operations Map
September 14, 2014
0600 - 1800
NAD83
State Plan Zone VI

Legend

- () Division
- ⊗ Fire Origin
- Ⓢ Staging Area
- Ⓜ Water Source
- Ⓜ Helibase
- ▣ Incident Command Post
- Drop Point
- Completed Line
- ▬ Uncontrolled Fire Edge
- AA Powerlines
- ⋯ Temporary Flight Restrictions



CH#	FUNCTION	CHANNEL NAME	RX FREQ	ZONE	TX FREQ	TONE
1	Command	CMD1	168.700		170.9750	(Tone1)110.9
2	Command	CMD2	169.5375		164.7125	(Tone1)110.9
3	BackUpNet	CNF	168.7500		171.4250	(Tone2)123.0
4	Tactical	R5 TAC 5	167.1125	(Tone1)110.9	167.1125	(Tone1)110.9
5	Tactical	NIFC T-1	168.0500	(Tone1)110.9	168.0500	(Tone1)110.9
6	Tactical	NIFC T-1	168.2000	(Tone1)110.9	168.2000	(Tone1)110.9
7	Tactical	VFIRE 24	154.2725	(Tone6)156.7	154.2725	(Tone6)156.7
8	Tactical	VFIRE 25	154.2875	(Tone6)156.7	154.2875	(Tone6)156.7
9	Tactical	VFIRE 26	154.3025	(Tone 6)156.7	154.3025	(Tone6)156.7
10	Tactical	NIFC TAC3	168.6000	(Tone1)110.9	168.6000	(Tone1)110.9
13	Air/Ground	A/G CMD	167.9500		167.9500	
14	Air/Ground	A/G CMD	166.9250		166.9250	
15	EMS TAC	CALCORD	156.0750		156.0750	(Tone6)156.7
16/20	Air/Ground		168.6250		168.6250	(Tone1)110.9



D.Samarin
 September 14, 2014
 1200 Hours

117°51'W 117°49'W 117°47'W 117°45'W 117°43'W 117°41'W 117°39'W 117°37'W 117°35'W 117°33'W 117°31'W 117°29'W 117°27'W 117°25'W 117°23'W

33°53'N 33°52'N 33°51'N 33°50'N 33°49'N 33°48'N 33°47'N 33°46'N 33°45'N 33°44'N 33°43'N 33°42'N 33°41'N 33°40'N 33°39'N 33°38'N