

117°41'W

117°39'W

117°37'W

117°35'W

117°33'W

117°31'W

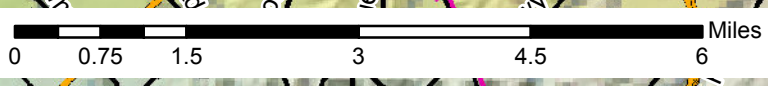
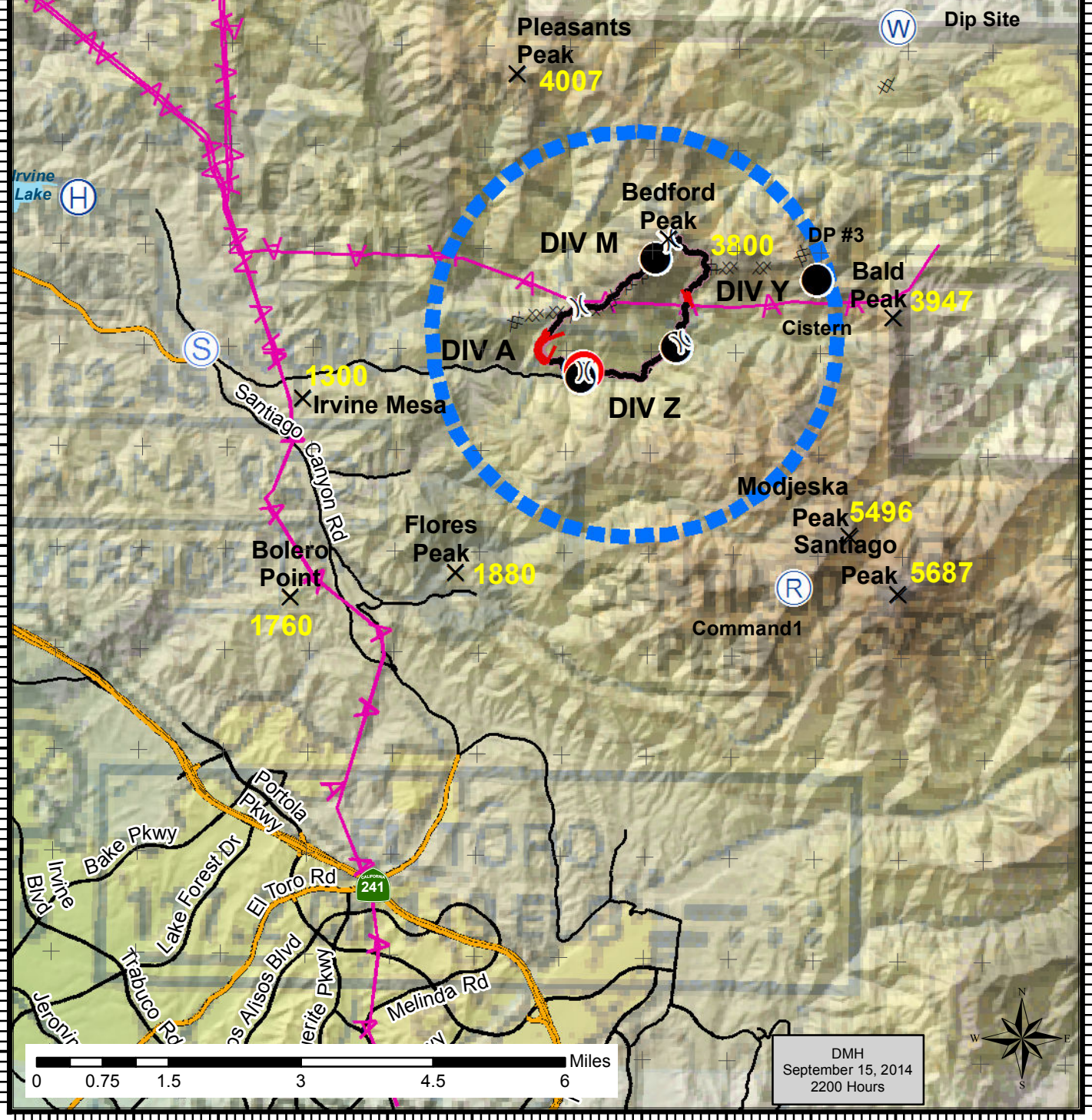
33°51'N  
33°50'N  
33°49'N  
33°48'N  
33°47'N  
33°46'N  
33°45'N  
33°44'N  
33°43'N  
33°42'N  
33°41'N  
33°40'N  
33°39'N  
33°38'N

33°51'N  
33°50'N  
33°49'N  
33°48'N  
33°47'N  
33°46'N  
33°45'N  
33°44'N  
33°43'N  
33°42'N  
33°41'N  
33°40'N  
33°39'N  
33°38'N

**Silverado Fire**  
CA-CNF-002873  
**Air Operations Map**  
September 16 2014  
0600 - 0600  
NAD83  
  
State Plan Zone VI

**Legend**

- ( ) Division
- ⊗ Fire Origin
- ⊙ Staging Area
- ⊙ Water Source
- ⊙ Helibase
- ⊙ Incident Command Post
- Drop Point
- Completed Line
- - - Uncontrolled Fire Edge
- Powerlines
- TFR



DMH  
September 15, 2014  
2200 Hours



117°41'W

117°39'W

117°37'W

117°35'W

117°33'W

117°31'W