

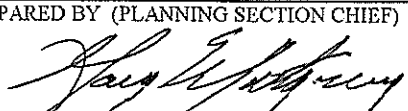
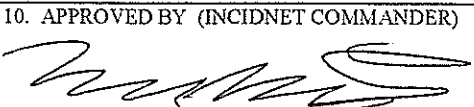
CORRECTED

CABIN FIRE

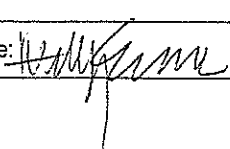
Saturday August 01, 2015

Day 0600 - 2200

**CA SQF 002313
P5JOFL15 0513**

INCIDENT OBJECTIVES	1. INCIDENT NAME	2. DATE PREPARED	3. TIME PREPARED
	Cabin	7/31/15	1800
4. OPERATIONAL PERIOD (DATE/TIME) <p style="text-align: center;">August 1, 2015 0600 - 2200 Day Operational Period</p>			
5. GENERAL CONTROL OBJECTIVES FOR THE INCIDENT (INCLUDE ALTERNATIVES) <p>Provide for Safety of All Incident Personnel and Public at all times.</p> <p>Management Objectives: Protect Critical Little Kern Golden Trout, Mountain Yellow Legged Frog, and Spotted Owl habitats. Protect Golden Trout Wilderness values and the South Mountaineer Research Natural Area (RNA). Minimize impact to air quality. Provide for timely and positive communications with local communities and public officials. Keep costs commensurate with values at risk.</p> <p>Control Objectives: Keep the fire: East of the Summit Trail and Golden Trout wilderness boundary to protect values at risk. North of the North Fork Tule River. Keep the fire from burning inholdings at Pecks Cabin area, Lion Meadow, Burnt Corral, Grey Meadow grazing permittee cabin and Sequoia Crest.</p>			
6. WEATHER FORCAST FOR OPERATIONAL PERIOD Partly cloudy through 1100 hrs then mostly cloudy with 70% chance of thunderstorms after 1300 hrs.			
7. GENERAL/SAFETY MESSAGE <p style="text-align: center;">Command transition today at 0600. Know who you are working for engaging the fire.</p>			
8. ATTACHMENTS (X IF ATTACHED)			
<input checked="" type="checkbox"/> 202	<input checked="" type="checkbox"/> SAFETY MESSAGE / LCES	<input type="checkbox"/> TRANSPORTATION MAP	
<input checked="" type="checkbox"/> 203	<input checked="" type="checkbox"/> WEATHER	<input checked="" type="checkbox"/> INCIDENT MAP	
<input checked="" type="checkbox"/> 204	<input checked="" type="checkbox"/> AIR OPERATIONS SUMMARY	<input type="checkbox"/>	
<input checked="" type="checkbox"/> 205	<input type="checkbox"/> HUMAN RESOURCE	<input type="checkbox"/>	
<input checked="" type="checkbox"/> 206	<input type="checkbox"/> ICP / CAMP MAP	<input type="checkbox"/>	
<input type="checkbox"/>	<input checked="" type="checkbox"/> FIRE BEHAVIOR	<input checked="" type="checkbox"/> ICS 214	
ICS 202	9. PREPARED BY (PLANNING SECTION CHIEF) 	10. APPROVED BY (INCIDENT COMMANDER)  DPLC	

ORGANIZATION ASSIGNMENT LIST (ICS-203)

1. Incident Name: CABIN FIRE		2. Operational Period: DAY		Date From: 8/1/2015 Time From: 0600		Date To: 8/1/2015 Time To: 2200	
3. Incident Commander(s) and Command Staff:				7. Operations Section:			
Incident Commander	Jerry McGowan		Chief	Steve Parr			
Deputy IC	Mike Dietrich		Planning Ops	Chad Cook			
Safety Officer	Jennifer Boyd / Linda Szczepanik		Branch I				
Public Information Officer	Hadley / Allison / Gibbs (t)		Branch Director				
Liaison Officer	Steve Negro		Division/Group	A	Unstaffed		
			Division/Group	B	Billy Steers		
			Division/Group	C	Jay Bertek		
			Division/Group	M	Jeremy Bush / Justin Gagnon (t)		
			Division/Group	Z	Unstaffed		
4. Agency/Organization Representatives:				Contingency Branch			
Sequoia NF	Eric LaPrice		Branch Director	Peter Tolosano / Ben Newburr (t)			
CAL FIRE	Stan Machado		Division/Group				
Tulare S.O.	Ron Crouch		Division/Group				
			Division/Group				
			Division/Group				
			Division/Group				
			Division/Group				
5. Planning Section							
Chief	Christie Neill / Gary Montgomery						
Resource Advisor Lead	Joshua Courter						
Resources Unit	Escalera / Evans / Morales (t)						
Situation Unit	Tad Morelock / Nisha VanHees (t)						
Documentation Unit	Tim Baal						
Demobilization Unit	Melody Fountain						
				Air Operations Branch			
Fire Behavior Analyst	Bob Patton		Air Operations Br. Dir.	Jonathan Keesee			
GISS	James Roberts		Air Tactical Group Sup.	Russ Gripp			
Training Specialist	Bob Rivelle		Air Support Group Sup.	Shawn Whittington			
CTSP	Jonathan Wilson						
6. Logistics Section:							
Chief	Dan Turner						
				8. Finance/Administration Section:			
				Chief	Rene White		
Support Branch				Time Unit	Jeff Bower / Gloria McCabe		
Ordering Unit	Jeff Carter / Michael Worford		Comp/Claims Unit	Lisa Dow			
Facilities Unit	Tim Gardner		Cost Unit	Roger Siemers			
Ground Support Unit	Dave Trussell		Procurement Unit	Byron Brown			
Service Branch							
Incident Com Mgr.	Scott LaRue						
Communications Unit	Kody Kerwin						
Medical Unit	Rodney Mascis						
Food Unit	Ricky Washington						
9. Date/Time Prepared: 7/31/15 2200		Prepared By: Audrey Evans			Signature: 		

Spot Forecast for CABIN Fire
National Weather Service San Joaquin Valley
839 PM PDT Fri Jul 31 2015

IF CONDITIONS BECOME UNREPRESENTATIVE,
CONTACT THE NATIONAL WEATHER SERVICE.

SPOT FORECAST FOR CABIN...USFS
NATIONAL WEATHER SERVICE HANFORD CA
839 PM PDT FRI JUL 31 2015

FORECAST IS BASED ON REQUEST TIME OF 1948 PDT ON JULY 31.
IF CONDITIONS BECOME UNREPRESENTATIVE...CONTACT THE NATIONAL WEATHER
SERVICE.

.DISCUSSION...SOUTHEAST FLOW ALOFT WILL KEEP MONSOONAL MOISTURE
STREAMING INTO THE AREA THROUGH THIS EVENING AND PROVIDE
A FAVORABLE ENVIRONMENT FOR THUNDERSTORMS. WETTING RAIN WILL
BE LIKELY WITH MOST THUNDERSTORMS HOWEVER GUSTY ERRATIC OUTFLOW
WINDS WILL STILL BE PREVALENT. THE CHANCE OF THUNDERSTORMS
WILL BE CONFINED TO AREAS EAST OF THE FIRE BY SUNDAY AND MONDAY
AS A DRIER SOUTHWESTERLY FLOW ALOFT BECOMES ESTABLISHED.
HUMIDITIES WILL TREND LOWER AFTER SATURDAY WHILE TEMPERATURES TREND
DOWN SLIGHTLY. WINDS WILL BE MAINLY TERRAIN DRIVEN HOWEVER WITH ANY
APPROACH OF A THUNDERSTORM, SPEEDS MAY INCREASE QUICKLY WITH
DIRECTION
BECOMING ERRATIC.

.SATURDAY...

SKY/WEATHER.....PARTLY CLOUDY THROUGH 1100 THEN
MOSTLY CLOUDY WITH 70 PERCENT CHANCE OF
THUNDERSTORMS AFTER 1300. RAINFALL AMOUNTS
OF 0.40-0.50 INCHES POSSIBLE.

CWR.....60 PERCENT.

MAX TEMPERATURE.....69-74.

MIN HUMIDITY.....39 PERCENT.

EYE LEVEL WINDS.....DOWNSLOPE WINDS 1-3 MPH THROUGH 0800 THEN
WIND BECOMING UPSLOPE 2-5 MPH AFTER 1000.

SURROUNDING RIDGE...SOUTHEAST 12-15 MPH.

MIXING HEIGHT.....INCREASING TO AROUND 9000 FEET AGL.

TRANSPORT WINDS.....SOUTHEAST 18 MPH.

.SATURDAY NIGHT...

SKY/WEATHER.....MOSTLY CLOUDY WITH A 20 PERCENT CHANCE OF
THUNDERSTORMS THROUGH 2100 THEN BECOMING
PARTLY CLOUDY. RAINFALL AMOUNT UP TO 0.10 INCHES.

CWR.....10 PERCENT.

MIN TEMPERATURE.....55-60.

MAX HUMIDITY.....75-80 PERCENT.

EYE LEVEL WINDS.....DOWNSLOPE 2-5 MPH.

SURROUNDING RIDGE...SOUTHEAST 10-15 MPH.

MIXING HEIGHT.....LOWERING TO AROUND 500 FEET AGL.

TRANSPORT WINDS.....SOUTHEAST 5 MPH.

.SUNDAY...

SKY/WEATHER.....SUNNY IN THE MORNING. CUMULUS BUILDUPS OVER
RIDGES TO THE EAST AFTER 1300.
CWR.....LESS THAN 10 PERCENT.
MAX TEMPERATURE.....69-74.
MIN HUMIDITY.....30-35 PERCENT.
EYE LEVEL WINDS.....DOWNSLOPE WINDS 1-3 MPH THROUGH 0800 THEN
WIND BECOMING UPSLOPE 2-5 MPH AFTER 1000.
SURROUNDING RIDGE...SOUTHWEST 10-15 MPH.
MIXING HEIGHT.....INCREASING TO AROUND 9000 FEET AGL.
TRANSPORT WINDS.....SOUTH AROUND 10 MPH.

4

FIRE BEHAVIOR FORECAST

FORECAST NUMBER: I	TYPE OF FIRE: Wildland Fire
FIRE NAME: Cabin	OPERATIONAL PERIOD: Day Shift 8/1/2015
DATE ISSUED: 7/31/2015	TIME ISSUED: 2100
UNIT: Sequoia NF	SIGNED: Bob Patton FBAN <i>Bob Patton</i>

INPUTS

WEATHER SUMMARY: *See attached Incident Meteorological Forecast*

Discussion:

Mostly cloudy with a 60% chance of afternoon thundershowers. Rainfall amounts between .40-.50" possible

Min Temp: 69-74°

Max RH: 39%

Winds: Becoming upslope 4-7 mph by 1100 gusts

GUSTY NEAR THUNDERSTORMS

Eye level: 1800 – 2100: Becoming upslope 2-5 mph after 1000

Ridgetop: Southeast 12-15 mph

FIRE BEHAVIOR

GENERAL:

Energy Release Component (ERC) for the Southern Sierra is running low for this time of year is believed to be caused by late rain in the spring. However, the ERC at Park Ridge RAWS is running higher at 61. Live fuel moisture are critically low between 50% at the lower elevations (3500') to around 70%. The surrounding RAWS stations indicate a trace of rain up to .57" fell in the past 24 hrs. Yesterday afternoon heavy rainfall was observed over the fire on the Bald Mtn. web camera. Relative humidity last night was forecasted to be between 90-100%, which is significant recovery.

With the amount of precipitation that fell in the past 36 hours coupled with high relative recovery humidity from last night, minimal fire activity is anticipated in or around the fire perimeter.

Division B: Southeast ridgetop winds will be favorable for this Division. Fuels between the proposed line and the fire perimeter will probably not carry fire at a moderate rate due to high fine fuel moisture.

Division C: Southeast ridgetop winds will be favorable for this Division. Fuels between the proposed line and the fire perimeter will probably not carry fire at a moderate rate due to high fine fuel moisture.

Division M: Southeast ridgetop winds will be testing the proposed fireline, however torching and spotting is not anticipated off the main fire.

Division Z: Rollout from the main fire could occur in the creek bottom. If this occurs, fire should hold in the creek, as the north aspect should be moist on the adjoining slope. In the event the fire crosses the creek, a rapid uphill run is not anticipated.

AIR OPERATIONS


Down draft from thunderstorms could affect air operations

SAFETY

GUSTY AND ERRATIC WINDS AROUND THUNDERSTORMS

Follow IRPG Guidelines for lightning safety. IMET will be tracking storm activity after around 1100 hours and will notify Operations of thunderstorm activity

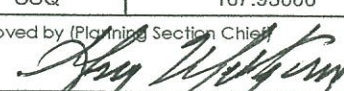
DIVISION/GROUP ASSIGNMENT LIST (ICS 204 WF)

1. Incident Name			3.			
CABIN FIRE			Branch	Division A		
2. Operational Period Day Shift						
Date/Time From: 08 / 01 / 2015 0600		Date/Time To: 08 / 01 / 2015 2200				
4. Operations Personnel						
Operations Chief	Steve Parr		Division/Group Supervisor	TBD		
Branch Director			Air Attack Supervisor	Russ Gripp		
5. Resources Assigned this Period						
Strike Team/Task Force/ Resource Designator	EMT	LWD	Leader	Number Persons	Drop Off PT./Time	Pick Up PT./Time
UNSTAFFED						
6. Control Operations/Work Assignments: Prepare ridge top. Line from Parole cabin, following the wilderness boundary to the west side of Soda fire burn area.						
7. Special Instructions: Utilize Minimum Impact Suppression Tactics (MIST) to minimize natural resource impacts and mitigate for Wilderness values, with particular focus on trails, cultural resources, and water courses. Review and adhere to the guidance in the IAP for wilderness spike camp MIST and Cabin fire trail clearance guidance.						
8. Division/Group Communication Summary						
Function	Channel	RX Frequency N/W	RX Tone/NAC	TX Frequency N/W	TX Tone/NAC	Mode
Command	SQF CH.2	168.67500	CSQ	170.57500	103.5	A T8
Tactical Div/Group	NIFC T-1	168.05000	CSQ	168.05000	CSQ	A
Logistics						A
Air to Ground	A/G PRI	167.95000	CSQ	167.95000	CSQ	A
9. Prepared by (Resource Unit Leader) Jason Escalera			Approved By (Planning Section Chief) 		Date 07/31/15	Time 2200

DIVISION/GROUP ASSIGNMENT LIST (ICS 204 WF)

1. Incident Name CABIN FIRE			3.			
2. Operational Period Day Shift			Branch	Division B		
Date/Time From: 08 / 01 / 2015 0600		Date/Time To: 08 / 01 / 2015 2200				
4. Operations Personnel						
Operations Chief	Steve Parr		Division/Group Supervisor		Billy Steers	
Branch Director			Air Attack Supervisor		Russ Gripp	
5. Resources Assigned this Period						
Strike Team/Task Force/ Resource Designator	EMT	LWD	Leader	Number Persons	Drop Off PT./Time	Pick Up PT./Time
CRW1 Truckee/HC C-7			Bobby Hubby	21	0600	Spike
CRW1 TBD <i>HORSES HAVE TIME</i>			TBD		0600	Spike
CRW2IA Cobras 6 C-21			Greg Pelsma	22	0600	Spike
CRW2IA Black Eagles 6 C-20			Khary Allen	22	0600	Spike
TFLD O-108			Nick Bianchini	1	0600	Spike
EMT			Marcus Bair	1	0600	Spike
6. Control Operations/Work Assignments: Continue to prep Summit Ridge from Monument Summit trail head to 31E14 and the wilderness boundary. Scout for line spike location, coordinate with READS for camp location.						
7. Special Instructions: Utilize Minimum Impact Suppression Tactics (MIST) to minimize natural resource impacts and mitigate for Wilderness values, with particular focus on trails, cultural resources, and water courses. Review and adhere to the guidance in the IAP for wilderness spike camp MIST and Cabin fire trail clearance guidance.						
8. Division/Group Communication Summary						
Function	Channel	RX Frequency N/W	RX Tone/NAC	TX Frequency N/W	TX Tone/NAC	Mode
Command	SQF CH.2	168.67500	CSQ	170.57500	103.5	A T8
Tactical Div/Group	NIFC T-1	168.05000	CSQ	168.05000	CSQ	A
Logistics						
Air to Ground	A/G PRI	167.95000	CSQ	167.95000	CSQ	A
9. Prepared by (Resource Unit Leader) Jason Escalera			Approved by (Planning Section Chief) <i>[Signature]</i>		Date 07/31/15	Time 2200

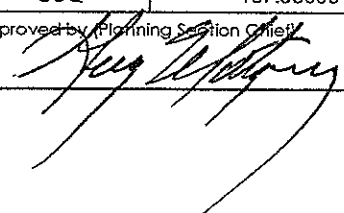
DIVISION/GROUP ASSIGNMENT LIST (ICS 204 WF)

1. Incident Name				3.			
CABIN FIRE				Branch	Division		
2. Operational Period				C			
Day Shift							
Date/Time From:		Date/Time To:					
08 / 01 / 2015 0600		08 / 01 / 2015 2200					
4. Operations Personnel							
Operations Chief		Steve Parr		Division/Group Supervisor		Jay Bertek	
Branch Director				Air Attack Supervisor		Russ Gripp	
5. Resources Assigned this Period							
Strike Team/Task Force/ Resource Designator	EMT	LWD	Leader	Number Persons	Drop Off PT./Time	Pick Up PT./Time	
CRW1 Lassen IHC C-6			Allen Schultze	22	0600	Spike	
CRW1 Fulton IHC C-2			Josh Accosta	17	0600	Spike	
CRW2IA Happy Camp C-8					0600	Spike	
CRW2IA Karuk 1 C-9					0600	Spike	
TFLD O-105			Ronald Gregor	1	0600	Spike	
READ			Alex Verdugo	1	0600	Spike	
FEMT Marcus Bux 0-36							
FEMT Alex Sperlich 0-15							
6. Control Operations/Work Assignments:							
Continue to scout and Prep Summit Ridge from section 22 to 31E14 trail head. Scout for line spike location coordinate with READS for camp location.							
7. Special Instructions:							
Utilize Minimum Impact Suppression Tactics (MIST) to minimize natural resource impacts and mitigate for Wilderness values, with particular focus on trails, cultural resources, and water courses.							
Review and adhere to the guidance in the IAP for wilderness spike camp MIST and Cabin fire trail clearance guidance.							
8. Division/Group Communication Summary							
Function	Channel	RX Frequency N/W	RX Tone/NAC	TX Frequency N/W	TX Tone/NAC	Mode	
Command	SQF CH.2	168.67500	CSQ	170.57500	103.5	A T8	
Tactical Div/Group	NIFC T-2	168.60000	CSQ	168.06000	CSQ	A	
Logistics							
Air to Ground	A/G PRICSQ	167.95000	CSQ	167.95000	CSQ	A	
9. Prepared by (Resource Unit Leader)			Approved by (Planning Section Chief)			Date	Time
Jason Escamca						07/31/15	2200

DIVISION/GROUP ASSIGNMENT LIST (ICS 204 WF)

1. Incident Name				3.			
CABIN FIRE				Branch	Division M		
2. Operational Period							
Day Shift							
Date/Time From: 08 / 01 / 2015 0600		Date/Time To: 08 / 01 / 2015 2200					
4. Operations Personnel							
Operations Chief	Steve Parr			Division/Group Supervisor	Jeremy Bush/ Justin Gagnon (t)		
Branch Director				Air Attack Supervisor	Russ Gripp		
5. Resources Assigned this Period							
Strike Team/Task Force/ Resource Designator	EMT	LWD	Leader	Number Persons	Drop Off PT./Time	Pick Up PT./Time	
CRW1 Breckenridge IHC C-1			James Robertson	18	0600	Spike Pecks Cabin	
CRW1 Springville IHC C-13			Jack Medina	18	0600	Spike Pecks Cabin	
6. Control Operations/Work Assignments: Continue prep along Summit Ridge from Peck cabin to section 22. Utilize Peck cabin spike location, validate camp location with READS.							
7. Special Instructions: Utilize Minimum Impact Suppression Tactics (MIST) to minimize natural resource impacts and mitigate for Wilderness values, with particular focus on trails, cultural resources, and water courses. Review and adhere to the guidance in the IAP for wilderness spike camp MIST and Cabin fire trail clearance guidance.							
8. Division/Group Communication Summary							
Function	Channel	RX Frequency N/W	RX Tone/NAC	TX Frequency N/W	TX Tone/NAC	Mode	
Command	SQF CH.2	168.67500	CSQ	170.575000	103.5	A T8	
Tactical Div/Group	NIFC T-1	168.05000	CSQ	168.05000	CSQ	A	
Logistics							
Air to Ground	A/G PRI	167.95000	CSQ	167.95000	CSQ	A	
9. Prepared by (Resource Unit Leader)				Approved by (Planning Section Chief)		Date	Time
JASON ESCOFF				<i>[Signature]</i>		07/31/15	2200

DIVISION/GROUP ASSIGNMENT LIST (ICS 204 WF)

1. Incident Name			3.				
CABIN FIRE			Branch	Division			
							Z
2. Operational Period							
Day Shift							
Date/Time From:		Date/Time To:					
08 / 01 / 2015 0600		08 / 01 / 2015 2200					
4. Operations Personnel							
Operations Chief		Steve Parr		Division/Group Supervisor			
Branch Director					Air Attack Supervisor		
					Russ Gripp		
5. Resources Assigned this Period							
Strike Team/Task Force/ Resource Designator		EMT	LWD	Leader	Number Persons	Drop Off PT./Time	Pick Up PT./Time
UNSTAFFED							
6. Control Operations/Work Assignments:							
7. Special Instructions:							
Utilize Minimum Impact Suppression Tactics (MIST) to minimize natural resource impacts and mitigate for Wilderness values, with particular focus on trails, cultural resources, and water courses.							
Review and adhere to the guidance in the IAP for wilderness spike camp MIST and Cabin fire trail clearance guidance.							
8. Division/Group Communication Summary							
Function	Channel	RX Frequency N/W	RX Tone/NAC	TX Frequency N/W	TX Tone/NAC	Mode	
Command	SQF CH.2	168.67500	CSQ	170.57500	103.5	A T8	
Tactical Div/Group	NIFC T-2	168.60000	CSQ	168.60000	CSQ	A	
Logistics							
Air to Ground	A/G PRI	167.95000	CSQ	167.95000	CSQ	A	
9. Prepared by (Resource Unit Leader)			Approved by (Planning Section Chief)			Date	Time
Jason Escalera						07/31/15	2200

DIVISION/GROUP ASSIGNMENT LIST (ICS 204 WF)

1. Incident Name CABIN FIRE		3.					
2. Operational Period Day Shift		Branch	Division CONTINGENCY BRANCH				
Date/Time From: 08 / 01 / 2015 0600							
4. Operations Personnel							
Operations Chief	Steve Parr		Division/Group Supervisor				
Branch Director	Peter Tolosano/Ben Newburn (t)		Air Attack Supervisor		Russ Gripp		
5. Resources Assigned this Period							
Strike Team/Task Force/ Resource Designator	EMT	LWD	Leader	Number Persons	Drop Off PT./Time	Pick Up PT./Time	
UNSTAFFED							
6. Control Operations/Work Assignments: Scout communities on the west side of Summit Ridge for contingency planning, utilize structure protection plans provided by local forest.							
7. Special Instructions: Utilize Minimum Impact Suppression Tactics (MIST) to minimize natural resource impacts and mitigate for Wilderness values, with particular focus on trails, cultural resources, and water courses. Review and adhere to the guidance in the IAP for wilderness spike camp MIST and Cabin fire trail clearance guidance.							
8. Division/Group Communication Summary							
Function	Channel	RX Frequency N/W	RX Tone/NAC	TX Frequency N/W	TX Tone/NAC	Mode	
Command	SQF CH.2	168.67500	CSQ	170.57500	103.5	A T8	
Tactical Div/Group	NIFC T-1	168.05000	CSQ	168.05000	CSQ	A	
Logistics							
Air to Ground	A/G PRI	167.95000	CSQ	167.95000	CSQ	A	
9. Prepared by (Resource Unit Leader)			Approved by (Planning Section Chief)		Date	Time	
					07/31/15	2200	



AIR OPERATIONS SUMMARY

PREPARED BY: Isidoro Solis PREPARED DATE/TIME: 7/31/15 @ 2000

1. INCIDENT NAME: Cabin 2. OPERATIONAL PERIOD DATE: 8/1/2015 START TIME: 0700 END TIME: 2100 SUNRISE: 0600 SUNSET: 2000

3. REMARKS (Safety Notes, Hazards, Air Operations Special Equipment, etc.):

Possible downdrafts and gusty winds due to thunderstorm activity
 Do not fly buckets/slings over residential areas.
 Follow Golden trout Wilderness water drops protocol. See documentation and watershed maps for guidance.

4. MEDEVAC A/C:

Day-order thru Helibase for available helicopter
 Night-Order 408 thru dispatch

5. TFR: 5-3078

Radius: 5 NM
 Altitude: 11,000 MSL
 Center point: Lat: 36 14.44
 Long: 118 32.50

6. PERSONNEL	Phone	7. FREQUENCIES	AM	FM	8. FIXED-WING	# Avail / Type/ Make-Model / FAA N# / Base(s)
AOBD: John Kesse	805-551-6422	AIR/AIR FW:		172.4375 rx/tx	Airtankers	No aircraft assigned
ATGS: Russ Gripp Jim Gonzalez	530-598-4172 619-607-8642	AIR/AIR RW:	123.1750		Leadplanes	
HLCO:		AIR/GROUND:		167.950 rx/tx		
ASGS: Shawn Whittington	661-330-0132	COMMAND:				
PMINT HEBM: Brad Corbin PVILLE HEBM: Cindy Bradley	559-542-2301 559-916-9355	COMMAND RPT	Rx: 168.6750 Tx: 170.5750 Tone 8 (103.5)		ATGS Aircraft	Air Attack 07 available at 0800. Lead Bravo 85 available for one relief cycle. Order through Air ops if needed. Additional air attack platform on order.
HEBM (T):		DECK FREQ:		163.100	Other	
ATB MGR: Raul Contreras	559-789-0191	TOLC FREQ:		163.100		

9. HELICOPTERS (Use Additional Sheets As Necessary)

FAA N#	TY	MAKE/MODEL	BASE	START	AVAIL	REMARKS	FAA N#	TY	MAKE/MODEL	BASE	START	AVAIL	REMARKS
H530	2	205A1++	Pmint	0700	0800	A-7	561AJ	1	BV234	PVILLE	0700	0800	A-10
H523	2	205A1 ++	Pmint	0700	0800	A-2	6BH	1	S70	PVILLE	0700	0800	A-16
H408	2	205A1	Caliente	1900	1900	Night Hoist Rescue	HT715	1	SKYCRANE	PVILLE	0800	1000	A-17
H554	2	205A1++	PVILLE	0700	0800	A-18							
H510	2	205A1++	PVILLE	0700	0800	A-20							
H509	2	COBRA / IR			2hrs								

10. TASK/MISSION/ASSIGNMENT (Type/Function includes: Air Tactical, Retardant, Recon, Personnel Transport, Water Dropping, S&R, etc.)				
TYPE/FUNCTION	NAME OF PERSONNEL OR CARGO (if applic) OR INSTRUCTIONS FOR TACTICAL AIRCRAFT	MISSION START	FLY FROM	FLY TO
Water Drops	Request through Air Attack if on station or direct to Peppermint Helibase. Maggie dip site 36° 16.746 X 118° 37.296	0800	Pmint Helibase	Fire
Retardant	No retardant approved for wilderness.			
HLCO	Not assigned			
Cargo	Fly gear and logistical support from Peppermint Helibase to Fire.	0800	Pmint Helibase	Fire
Passengers	Fly Crews from Peppermint Helibase to Peck Helispot 36° 16.981 X 118° 36.015	0800	Pmint Helibase	Beck Helispot
Recon	Request thru Air ops.	0800	Pmint Helibase	Fire
Communications				

S A F E T Y M E S S A G E

Cabin Fire

August 1, 2015

USE **L**OOKOUTS, **C**OMMUNICATIONS, **E**SCAPE ROUTES, **S**AFETY ZONE
LCES IN PLACE EVERY TIME

Major Hazards and Risks:

Team Transition -- CIIMT 1 takes command of the Cabin Fire at 0600 today, look for new overhead supervision . Know who you are working for before engaging the fire,

Thunderstorms Increased thunderstorm potential in the forecast today. Pay attention to changes in the weather and monitor radio channels for announcements of approaching storm cells. Brief crews on the disengagement plan if the weather changes. Be prepared for localized heavy rain as isolated flood warnings may be issued.

Dehydration—Did you know...Its important at night also to rehydrate

1. Caffeine speeds up loss of fluids in your body (limit coffee and cola intake)
2. Thirst always underestimates fluid needs (drink before you feel thirsty)
3. Signs of possible dehydration include rapid heart rate, weakness, excessive fatigue, dizziness, painful urination and dark colored urine

Situational Awareness – Conduct thorough briefings with your crew on all components of the IAP. Weather forecast should be highlighted in crew briefing today. Crews know where your paramedics/ EMTs are, and ensure communications are in place. Make LCES personal for your piece of real estate.

Communications – Emphasize the Communication plan during crew briefings. Ask COML if you have any questions and or concerns. Use human repeaters in poor coverage areas and make sure everyone can get important messages and weather updates.

Structure Protection Pecks Cabin – An individual's ability to assimilate all available factors affecting situational awareness is limited in a dynamic wildland urban interface fire environment. Every firefighter is responsible to understand and recognize these limitations, and to apply their experience, training and personal judgment to observe, orient, decide, and act in preparation for the "worst case".

Prepared by: Jennifer Boyd Safety Officer Date: 8/1/15

INCIDENT SAFETY ANALYSIS 215a

Cabin Fire - Saturday August 1, 2015

	9. Hazard	6. Control or Abatement Action (Engineering, Administrative, PPE, Avoidance, Education, etc)
All	Extreme Drought Conditions	<ul style="list-style-type: none"> • Local and inbound fire personnel need to be aware that fire behavior is exceeding normal expectations for this time of the year. • Local briefings need to be thorough and highlight specific fire environment conditions. These include but are not limited to local weather forecasts, Pocket Cards, ERC's, live and dead fuel moistures, and special fuel conditions such as mortality, Sudden Oak Death and frost killed brush, etc. • Suppression actions need to be based on good anchor points, escape routes, and safety zones. • Remember LCES. Experienced lookouts are essential under these conditions. • Base all actions on current and expected behavior of the fire. • Augment initial attack resources as incident activity dictates.
Camp Enroute to Helibase	Driving & Traffic	<ul style="list-style-type: none"> ~• Drive with lights on. • Do not use cell phone while driving. Slow down in smoke and congested areas. • Check bridge load rating before using for heavy equipment; if in doubt, find another route. • Slow down at night - expect animals in the road. • Use spotter for backing. • Wash windshield. • Utilize spike camps to reduce driving
All	Line Constructions	<ul style="list-style-type: none"> • Conduct thorough briefing for all personnel (inside rear cover IRPG). • Ensure LCES in place prior to engagement (IRPG p. 7). • Establish adequate safety zones (IRPG p.8). • Follow "Look Up, Look Down, Look Around" procedures (IRPG p. 3-4). • Utilize Risk Management Process (IRPG p.1).
Pecks Cabin	Structure Protection & HAZMAT	<ul style="list-style-type: none"> ~ Review "Wildland Urban Interface" Watch outs, IRPG page 10 ~ Use "Structure Assessment" checklist, IRPG pages 11-14 ~ Follow "HAZMAT Incident Operations" on pages 32-37 in IRPG
all	Steep Terrain & Rolling Debris	<ul style="list-style-type: none"> • Determine if the mission is necessary. • Limit exposure by avoiding whenever possible. • Use the proper resource. • Post lookouts. Footing situational awareness
All	Extreme Fire Behavior	<ul style="list-style-type: none"> • Share weather observations with all personnel assigned to division • Review "Severe Fire Behavior Potential" (IRPG p.68). • Monitor current weather conditions and forecasts. Make sure all personnel receive thorough briefings every shift. • Maintain adequate escape routes and safety zones. Advise all personnel if these are compromised or changed. Set trigger points when appropriate. • Adhere to 10 Std Orders, mitigate 18 situations. • Maintain Situational Awareness
All	Air Operations	<ul style="list-style-type: none"> • Insure that the mission is necessary. • Observe weather minimums. • Assign appropriate aircraft for the mission. • Maintain good communications. Use ground contacts. • Proper flight following. • Use aerial supervision (air attack, Helco)

INCIDENT SAFETY ANALYSIS 215a

All	Heat Related Illness (HRI)& Dehydration	<ul style="list-style-type: none"> ~Drink Fluids throughout operational period, up to 1.5 gallons per shift. ~Carry extra water on line and cache water at drop points ~Take Frequent breaks, minimum of 10 minutes every hour ~Recognize symptoms of HEAT RELATED ILLNESS which include <ul style="list-style-type: none"> o Lack of energy o Headaches, dizziness o Lack of rest o No hunger, poor eating habits o Hot skin, and lack of sweating
All	Bees, Ticks, Spiders, Mosquitoes	<ul style="list-style-type: none"> • Beaware of crew members with sting allergies. • Ensure crew members have medication pens if needed. • Perform daily self inspection • Use repellent as necessary • Inspect tent and sleeping bags for spiders. • Always look before placing hands in or on anything. • Carry EPI kits if known to be allergic to bee stings.
All	Severe Weather	<ul style="list-style-type: none"> ~ Monitor weather, watch for trends. ~ Review Severe Fire Behavior Potential IRPG p 68 ~ Establish "Trigger Points" to withdraw, and ensure all know rally site ~ Use "Risk Management" process to determine retreat criteria and actions ~ Carry rain gear and extra food and water if weather limits retreat to ICP

INCIDENT RADIO COMMUNICATIONS PLAN

Incident Name			Date/Time Prepared			Operational Period Date/Time				
CABIN FIRE			07/31/15 2030			08/01/15 0600 TO 1800				
L	Ch #	Z o n e	Function	Channel Name/ TG Name	Assignment	RX Freq N or W	TX Freq N or W	Tx Tone/ NAC	Mode A, D or M	Remarks
1			Command	SQF CH 2	COMMAND	168.67500	170.57500	103.5	A	T8 - Jordan Pk
2			Tactical	NIFC T1	DIV A/M/B	168.05000	168.05000	CSQ	A	
3			Tactical	NIFC T2	DIV Z/C	168.60000	168.60000	CSQ	A	
4			Ground to Air	A/G PRI		167.95000	167.95000	CSQ	A	
5										
6										
7										
8										
9										
10										
11										
12										
13										
14										
15										
16										
17										
18										
19										
20										

Prepared By (Communications Unit) *Kody Kerwin* Incident Location County State Latitude Longitude W

Kody Kerwin CALLMT 1.COML

The convention calls for frequency lists to show five digits after the decimal place, followed by either an "N" or a "W", depending on whether the frequency is narrow or wide band. Mode refers to either "A" or "D" indicating analog or digital (e.g. Project 25) or "M" indicating mixed mode. Use Remarks for any clarifications, to show gateway channels or other information. All channels are shown as if programmed into a hand held, mobile or control station radio. A Repeater must be programmed with the Rx and Tx reversed. A Base Station is simplex typically

° MEDICAL PLAN	1. Incident Name CABIN FIRE	2. Date Prepared 07/30/2015	3. Time Prepared 2200	4. Operational Period 07/31/2015 0600-2200
----------------	---	--------------------------------	--------------------------	--

5. Incident Medical Aid Station

Medical Aid Stations	Location	Paramedics	
		Yes	No
Incident ICP Medical Unit:	ICP Western Divide Ranger District		X

6. Transportation

A. Air & Ground Ambulance Services

Name	Address	Phone	Paramedics	
			Yes	No
Grnd Ambulance, Imperial / AMR	Porterville/Springville	911	X	
Halls Ambulance (Ground)	Primary Bakersfield		X	
Liberty Ambulance (Ground)	Kernville		X	
Porterville Ambulance (Ground)	Porterville co determined by TCAD	(559)687-3314	X	
Hall Air Ambulance (ALS) Air	Bakersfield, Request through Kern ECC	(661)-392-8536	X	
Kern County Fire 407/408 (primary BLS ship) Hoist & Night Ops.	Keene Helibase Request Through CCICC			X

7. Hospitals

Name	Address	Travel Time		Phone	Helipad		Burn Center	
		Air	Ground		Yes	No	Yes	No
Sierra View Hosp. (Basic)	465 West Putnam, Porterville	30mi n	90	(559)-784-1110		X		X
Kern Valley Hospital	6412 Laurel Ave, Mt. Mesa	25mi n	1.5hr	(760)-379-2681		X		X
Kern Medical Center	1830 Flower St. Bakersfield, Ca. 35,23.03 X 118,58.05	45mi n	2.5hr	(661)-326-2667	X			X
San Joaquin Community Hospital (Burn and Cardiac)	2615 Chester Ave Bakersfield, Ca. 93301 35,23.01 X 119,01.08	45mi n	2.5hr	(661)-869-6200	X		X	
(Level I) Burn and Trauma Regional Medical Center (RMC)	2823 Fresno, St. Fresno, Ca. 93702 36,4419.8 X 119, 4707.8 Pad (A) (B) 22,000 LBS Limit	27mi n	2.7hr	(559)-459-4220	X		X	

8. Medical Emergency Procedures

In the event of a medical emergency provide the following information to the INCIDENT DISPATCH CENTER.

1. Declare the nature of the emergency. Is it a medical injury or illness? If injury/illness, is it Life Threatening (Advanced Life Support "ALS") requiring an emergency medical air medivac? Or, is it a stable non life-threatening (Basic Life Support "BLS") situation that can utilize medical assistance transport by ground.
2. If Life threatening, then request that the designated radio frequency be cleared for emergency traffic.
3. Identify the on-scene Point of Contact (POC) by Resource and Last name. This may be you.
4. Identify nature of incident, number injured, patient assessment(s) and location (geographic and GPS Coordinates -Lat /long).
5. Identify on-scene medical personnel by position and name (i.e. EMT Jones),
6. Identify the preferred method of patient transport,
7. Request any additional resources and/or equipment needed,
8. Document all information received and transmitted on the radio or phone.
9. Identify any changes in the on-scene Point of Contact or medical personnel as they occur.

In the event of an accident of any size or complexity, your primary responsibility is to ENSURE that the patient(s) receives prompt and effective *Triage, Treatment, and Transportation*.

- Conduct Size-up of the incident (Nature of accident, number/type of resources, location): Immediately contact Incident Communications by radio. Then notify supervisor and request assistance as needed. If unable to immediately contact supervisor to seek direction, you must continue as on-scene point of contact until relieved.
- Coordinate with on scene or closest medical responders to manage the response to the accident: utilize "START" to communicate status of patient(s). See below.
- Evaluate special needs (law enforcement, heavy rescue, haz-mat, etc.) and additional staff, if needed.
- Coordinate with Air Attack for Air-Medical transportation needs.
- Coordinate with incident communications for ground transportation. All responses will include ground transportation regardless if air is the preferred transport. Ground transportation can be cancelled after air has completed the mission.
- Preserve the scene for accident investigation.
- Remain aware of surroundings and, if needed delegate personnel to monitor the main incident (fire).
- Keep Incident Communications updated on all aspects of the emergency as it unfolds.

"START" (Simple Triage and Rapid Treatment)

MINOR: Walking Wounded

DELAYED: Can Follow Simple Commands

IMMEDIATE: Respirations have been restored
Respirations above 30
Radial pulse Absent
Capillary Refill >2 seconds
CANNOT Follow Simple Commands

FATALITY: No respirations after head tilt

Prepared by (Medical Unit Leader)

Wilderness Spike Camp MIST

Campsite Considerations

Site Location

- Coordinate with a Resource Advisor in choosing a site with the resource protection and safety concerns in mind.
- If existing campsites are not available, select campsites not likely to be observed by visitors
- Locate facilities outside of wilderness whenever possible.
- Use existing campsites such as dispersed sites used by hikers if possible.
- Evaluate short-term low impact camps such as coyote or spike versus use of longer-term higher impact camps.
 - When there are small groups try to disperse use.
 - In the case of larger camps: concentrate, mitigate, and rehabilitate.
- New site locations should be on durable surfaces such as dirt, sandy soils, or openings with heavy timber.
- Avoid camps in meadows, along streams or on lakeshores. Locate at least 200 feet from these sensitive areas.
- Consider impacts on both present and future users.

Camp Layout

- Use “leave no trace” camping techniques.
- Lay out the camp components carefully from the start. Define cooking, sleeping, latrine, and water supply.
- Consider fabric ground cloth for protection in high use areas such as around cooking facilities.
- Constantly evaluate the impacts which will occur, both short and long term.
- Do not use nails in trees.
- Prepare bedding and campfire sites with minimal disturbance to vegetation and ground.
 - Do not clear vegetation or trench to create bedding sites.
- Minimize the number of trails and ensure adequate marking.
- Monitor travel routes for damage and mitigate by:
 - Dispersing on alternate routes or
 - Concentrating travel on one route and rehabilitate at end of use.

Personal Sanitation:

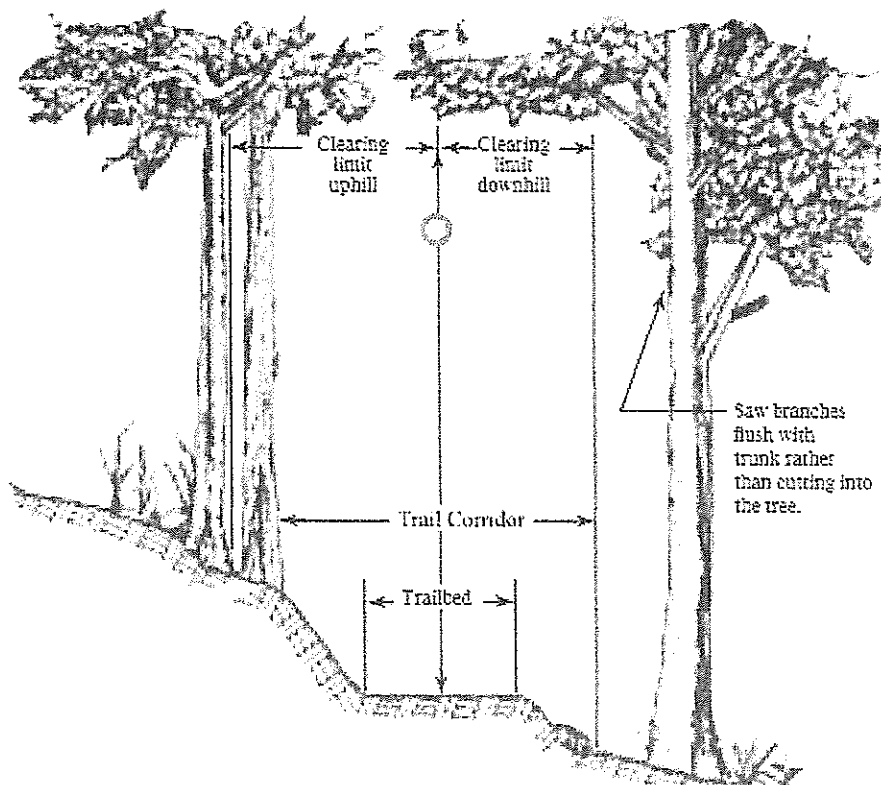
- Carry water away from lakes and streams for bathing and sanitation.
 - Designate a common area for personnel to wash. Provide fresh water and biodegradable soap.
 - Do not introduce soap, shampoo or other chemicals into waterways. Use these items at least 200 feet away from waterways.
 - Dispose of wastewater at least 200 feet from water sources.
- Toilet facilities
 - Provide portable toilets at areas where crews are staged.
 - Use commercial portable toilet facilities where available. If not, a latrine hole should be utilized.
 - Toilet sites should be located a minimum of 200 feet from water sources.
 - Holes should be dug 6-8 inches deep.
 - If more than 1 crew is camped at a site, strongly consider portable toilets and remove waste.

Food Storage

- Place all food in bear proof containers and/or have a camp manager monitoring food at all times.
- Store food so that it is not accessible to wildlife, away from camp and in animal resistant containers.

Cabin Fire Trail Clearing Guidance

Clearing Limits



Trailbed width is 3 feet wide

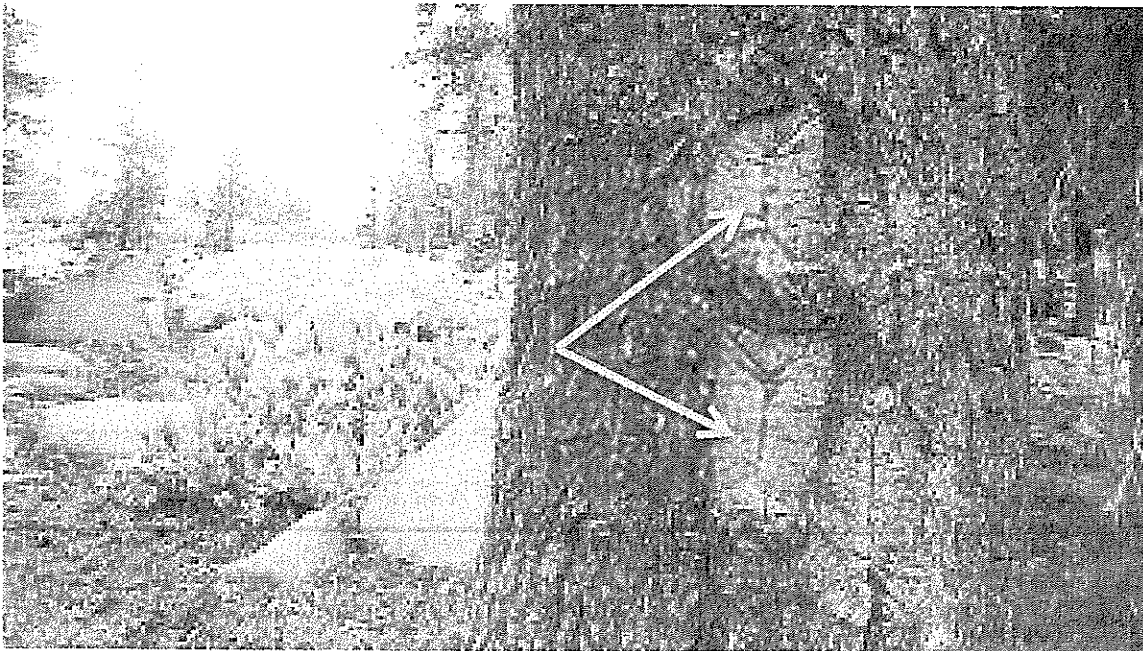
- Remove obstacles, such as rocks or fallen trees, from the Trailbed and place outside of the Trail Corridor to make it possible to ride or walk on the tread.
- If a trail crosses riparian vegetation adjacent to streams and meadows, do not cut/remove any ground vegetation. Pruning branches hanging over the Trailbed and Trail Corridor is okay.

Trail Corridor is 8 ft wide by 10 ft high (Saw cut 4ft from both sides of Trailbed).

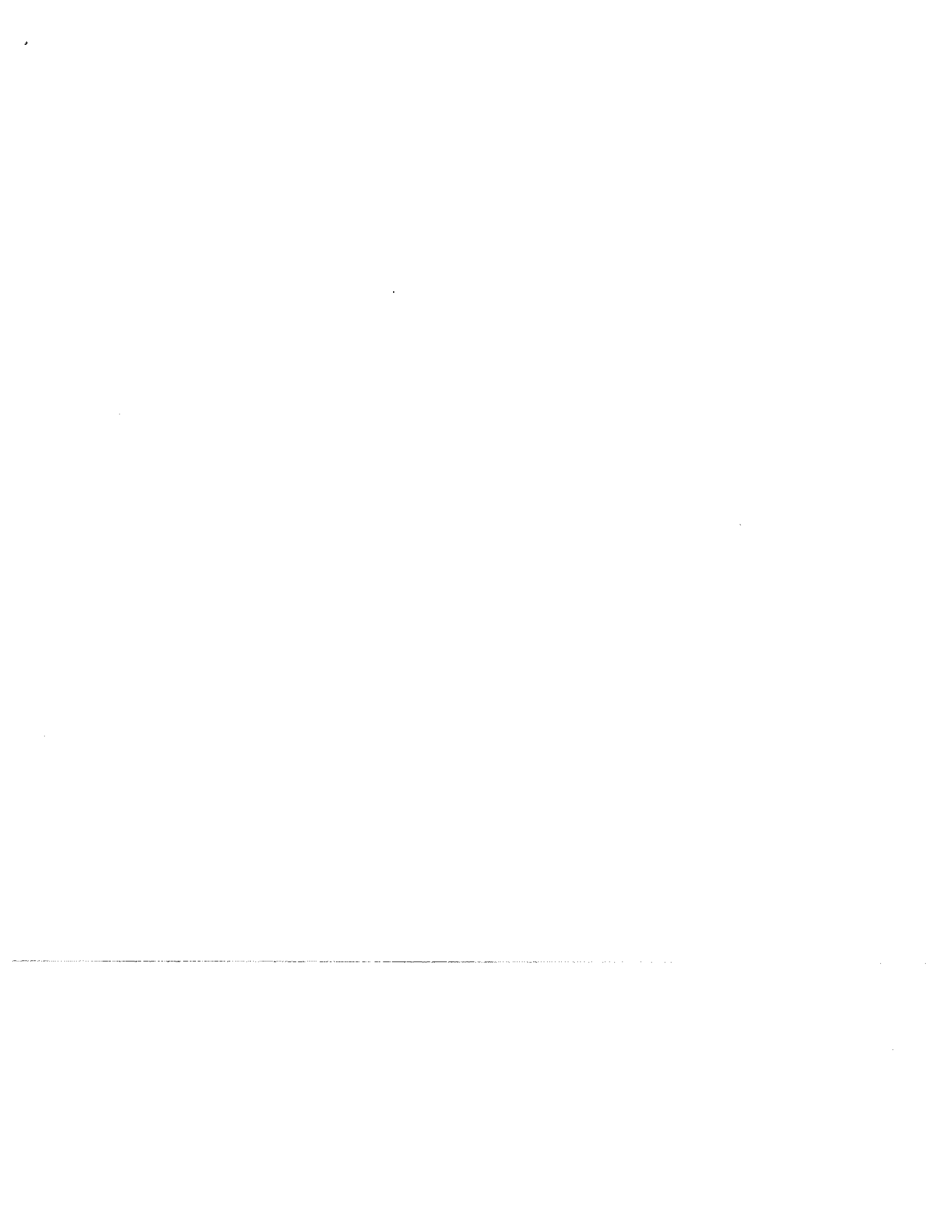
- Clear brush to the ground and scatter pieces outside of the Trail Corridor
- Remove fallen trees
 - If rounds are created, place outside of Trail Corridor and hidden from view as best as possible. Do NOT roll rounds down into drainages.
- For live trees on the outside of the corridor, but with branches hanging into
 - Saw branches flush with trunk rather than cutting into the tree (see figure above)
- Remove hazardous trees, if safe to do so, that are hanging over/within the trail corridor.
- **DO NOT** cut trees with blaze marks. These are two rectangular shapes, one on top of the other, indicating trail locations (see following below).



Example of a trail blaze mark on a tree. Sizes may vary.



Example of an old tree blaze mark that is partially healed.



UNIT LOG		1. Incident Name	2. Date Prepared	3. Time Prepared
4. Unit Name/Designators		5. Unit Leader (Name and Position)		6. Operational Period
7. Personnel Roster Assigned				
Name		ICS Position		Home Base
9. Prepared by (Name and Position)				