

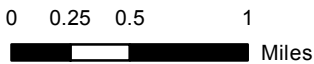


# CABIN FIRE

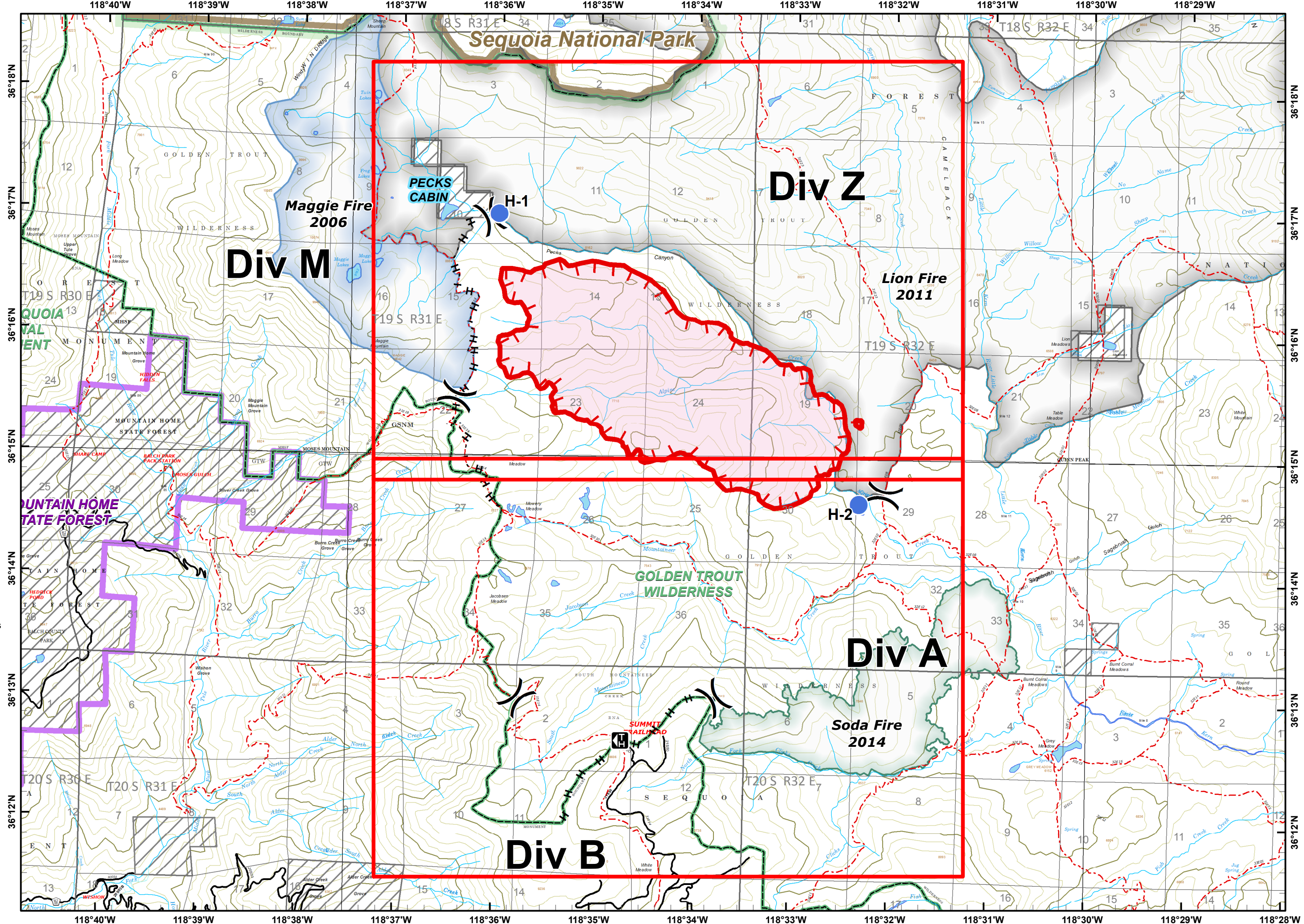
CA-SQF-002313  
August 2, 2015

- Cabin Fire
- Contained Fire Edge
- Uncontrolled Fire Edge
- Hand Line
- Division Break
- Helispot
- USFS - National Forest Boundary
- NPS - National Park Boundary
- Wilderness Boundary
- Mountain Home State Forest
- Non-Forest Service
- Trail
- Road

## Page Index



200 ft Contours  
NAD 83 UTM Zone 11





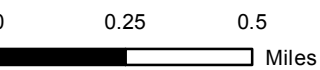


# CABIN FIRE

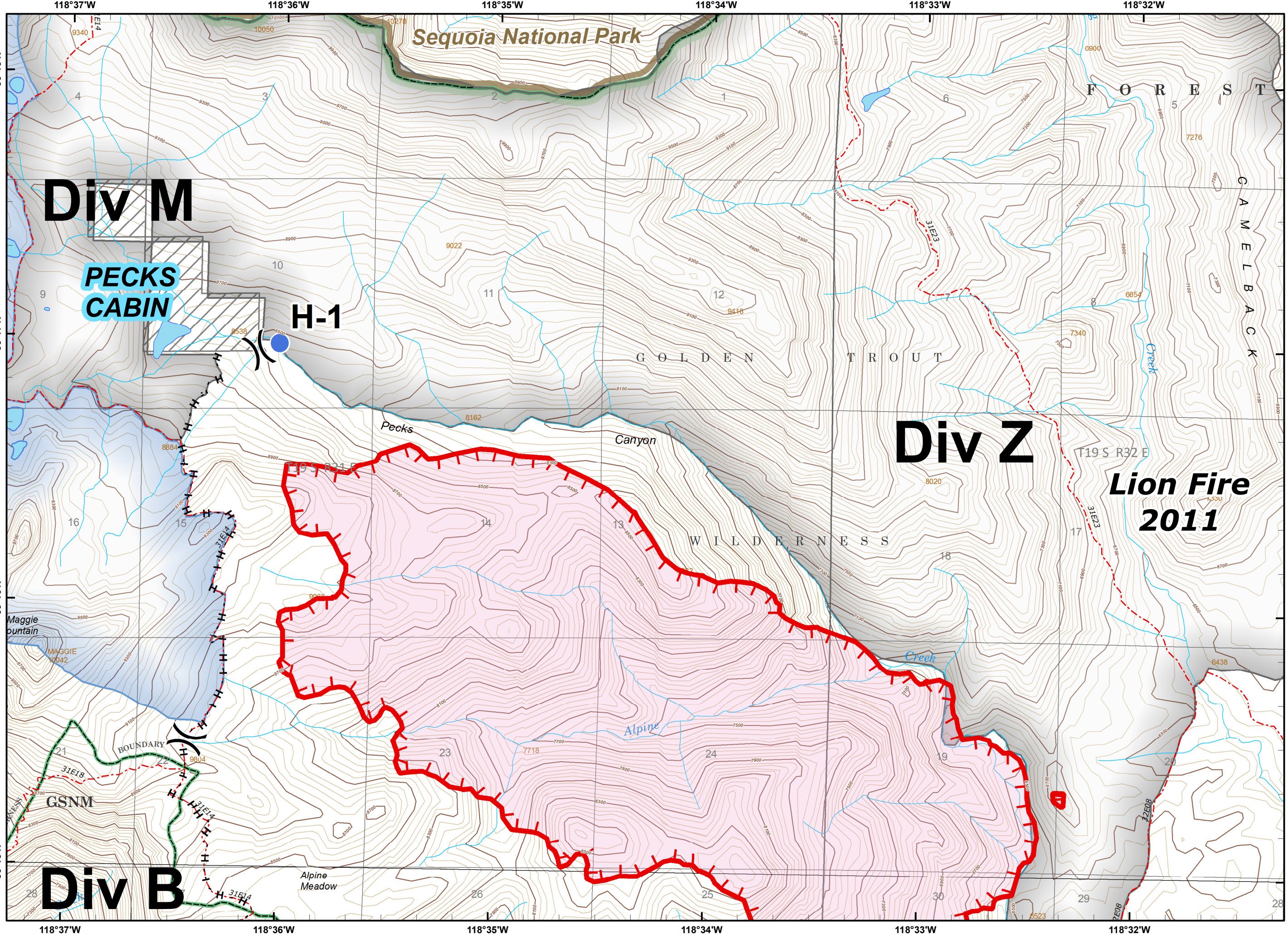
CA-SQF-002313  
August 2, 2015

- Cabin Fire
- Contained Fire Edge
- Uncontrolled Fire Edge
- Hand Line
- Division Break
- Helispot
- USFS - National Forest Boundary
- NPS - National Park Boundary
- Wilderness Boundary
- Mountain Home State Forest
- Non-Forest Service
- Trail
- Road

Page 1



40 ft Contours  
NAD 83 UTM Zone 11



# Div M

## PECKS CABIN

### H-1

# Div Z

## Lion Fire 2011

# Div B

### Sequoia National Park

### GOLDEN TROUT

### WILDERNESS

### F O R E S T

### C A M E L B A C K

### Pecks Canyon

### Canyon

### Creek

### Alpine

### Alpine Meadow

### Maggie Mountain

### MAGGIE

### GSNM

### BOUNDARY

### 28

### 16

### 36°17'N

### 36°17'N

### 36°16'N

### 36°15'N

### 118°37'W

### 118°36'W

### 118°35'W

### 118°34'W

### 118°33'W

### 118°32'W

### 118°37'W

### 118°36'W

### 118°35'W

### 118°34'W

### 118°33'W

### 118°32'W

### 36°18'N

### 36°17'N

### 36°16'N

### 36°15'N

### 36°18'N

### 36°17'N

### 36°16'N

### 36°15'N

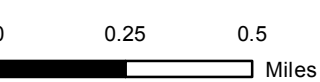




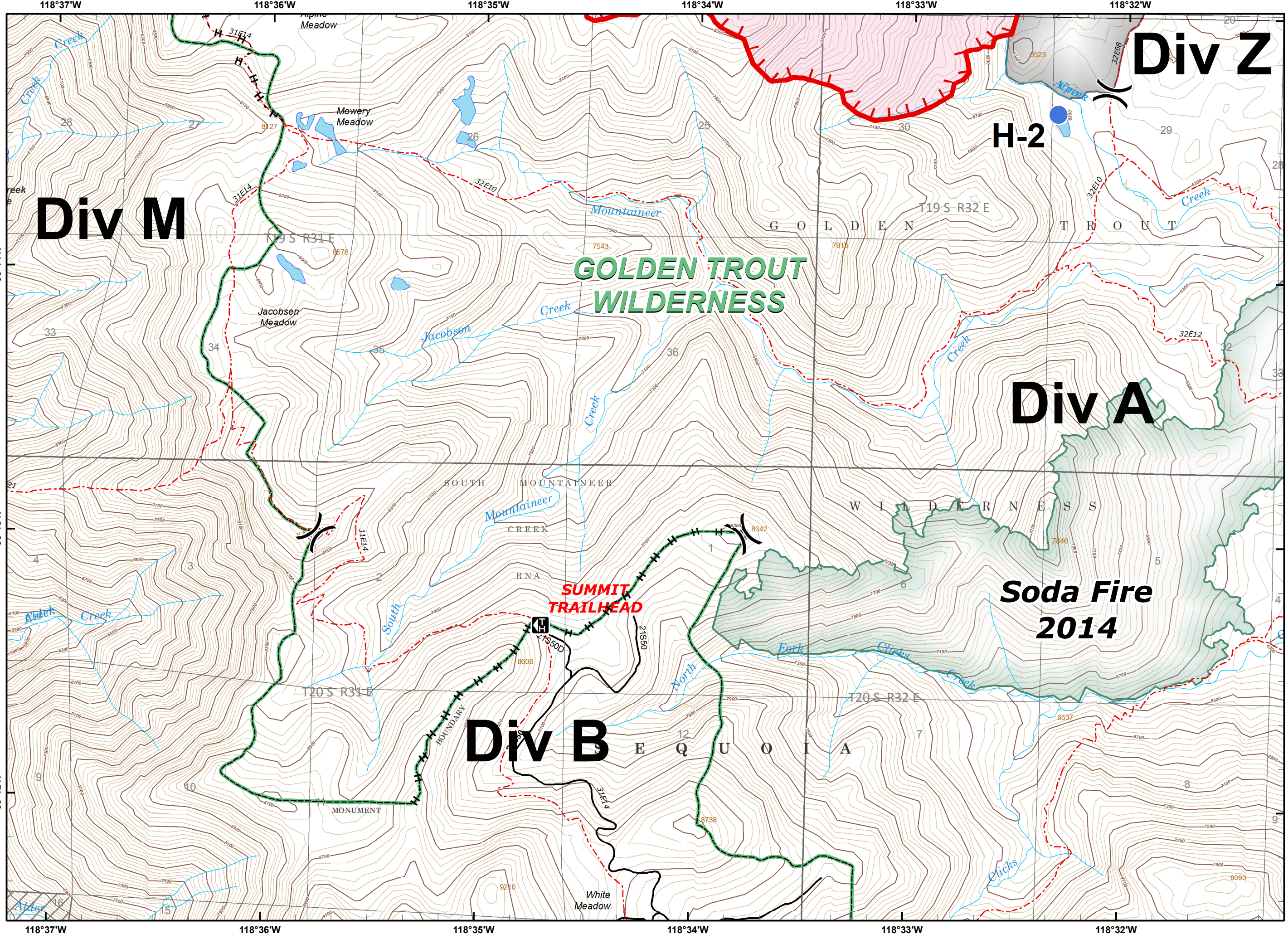
**CABIN FIRE**  
CA-SQF-002313  
August 2, 2015

- Cabin Fire
- Contained Fire Edge
- Uncontrolled Fire Edge
- Hand Line
- Division Break
- Helispot
- USFS - National Forest Boundary
- NPS - National Park Boundary
- Wilderness Boundary
- Mountain Home State Forest
- Non-Forest Service
- Trail
- Road

Page 2



40 ft Contours  
NAD 83 UTM Zone 11



**Div M**

**Div Z**

**H-2**

**GOLDEN TROUT WILDERNESS**

**Div A**

**Div B**

**Soda Fire 2014**

**SUMMIT TRAILHEAD**

