



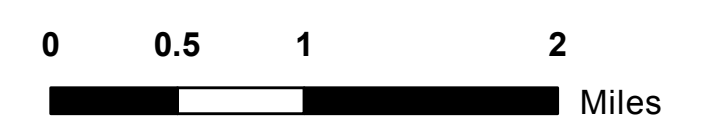
# CABIN FIRE

CA-SQF-002313 August 6, 2015

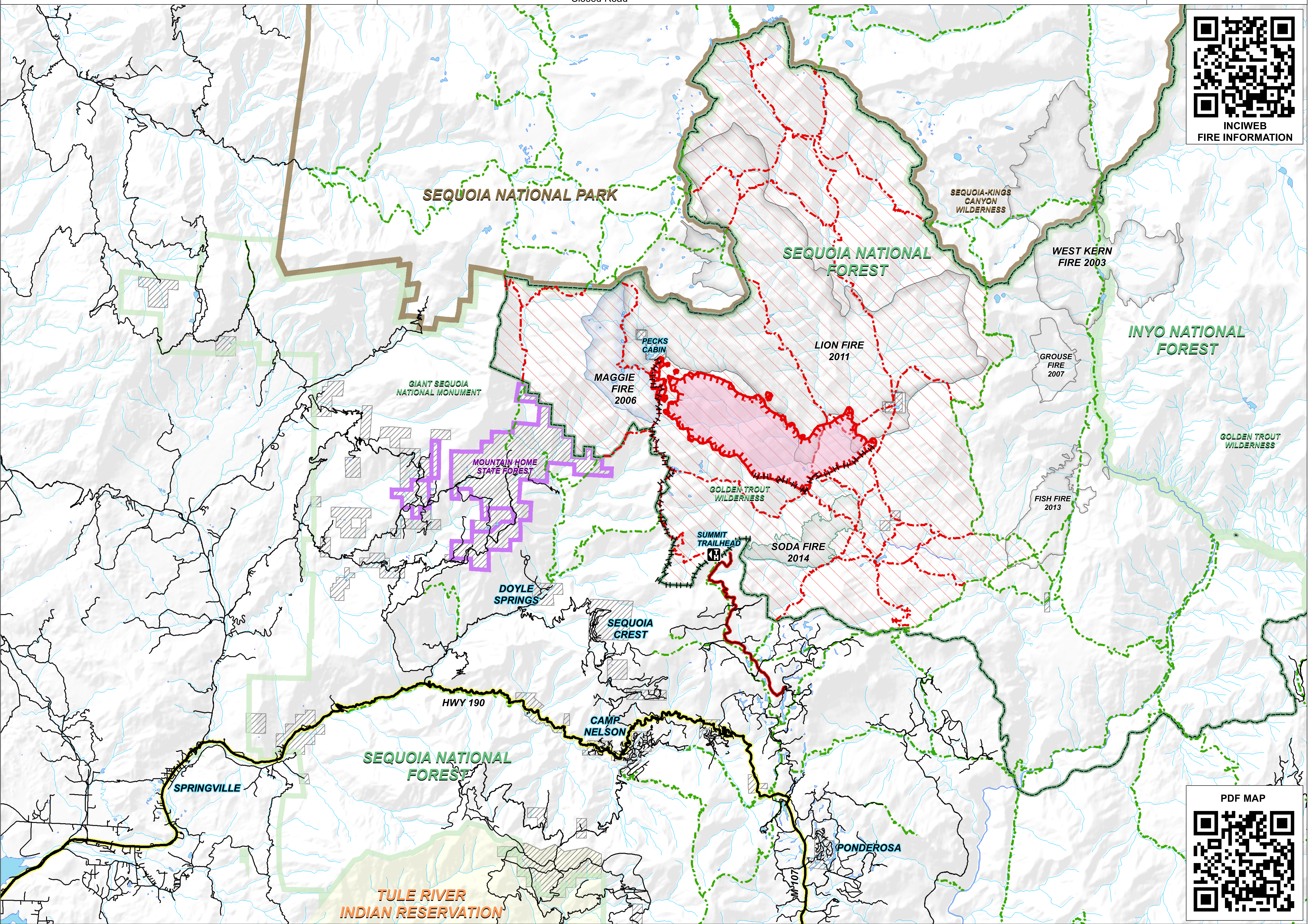
## PUBLIC INFORMATION MAP

- Cabin Fire
- Uncontrolled Fire Edge
- Contained Fire Edge
- Completed Hand Line
- Forest Closure Area
- Open Trail
- Closed Trail
- Open Road
- Closed Road
- USFS - National Forest Boundary
- NPS - National Park Boundary
- Golden Trout Wilderness
- Indian Reservation
- Mountain Home State Forest
- Non-Forest Service

4,713 acres  
Approximate Perimeter  
as of 8/5/2015 @ 1900 hrs



INCIWEB  
FIRE INFORMATION



PDF MAP