



CABIN FIRE

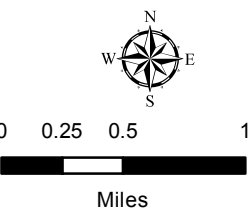
CA-SQF-002313

August 6, 2015

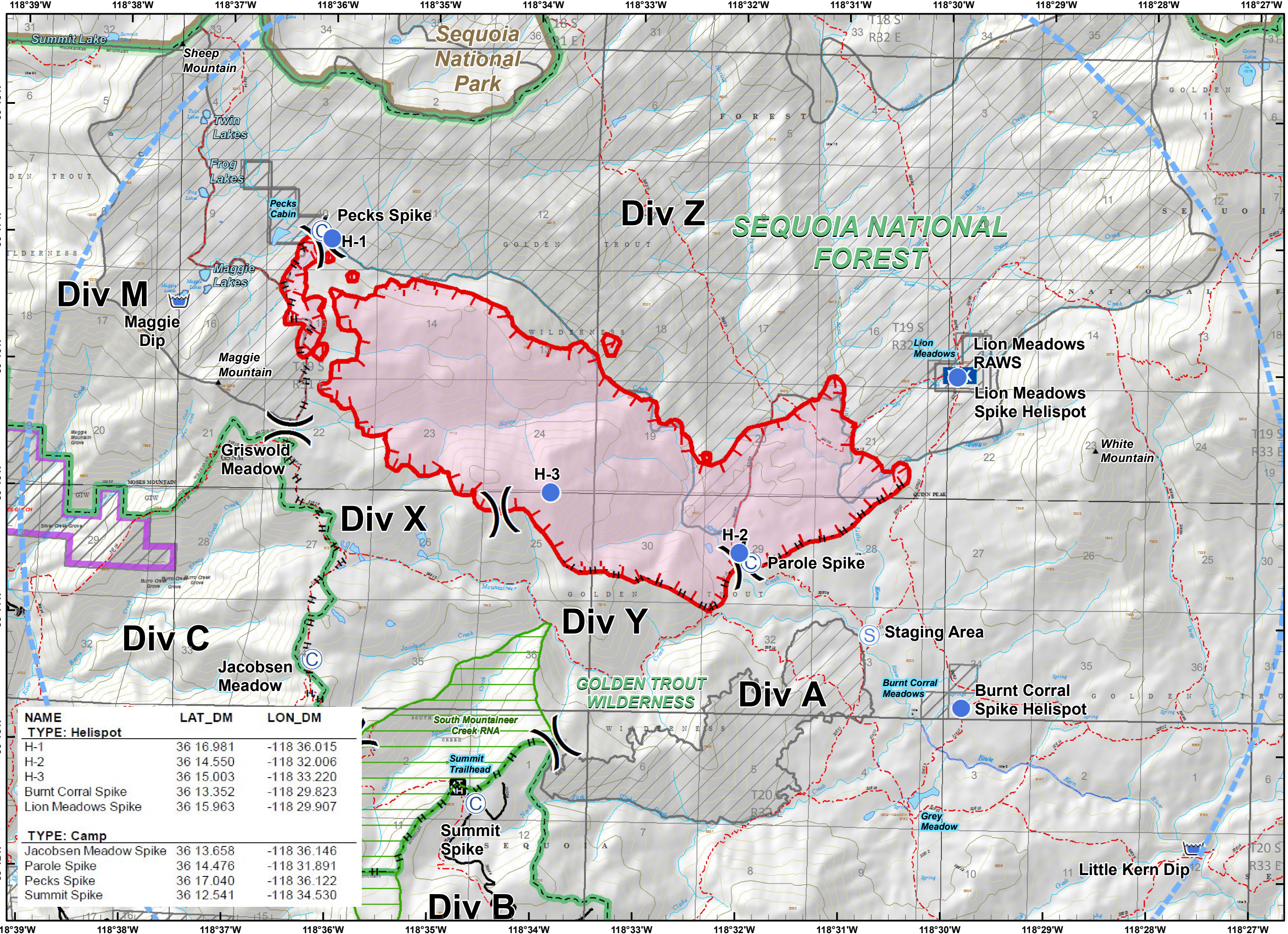
4,713 acres

Approximate Perimeter as of 8/5/2015 @ 1900 hrs

- TFR 5_3078
- Division
- Camp
- Helispot
- Mobile Weather Unit
- Staging Area
- Dip Site
- Hand Line
- Uncontrolled Fire Edge
- Cabin Fire
- Research Natural
- Trail
- Road
- Wilderness
- Forest Boundary
- National Park Boundary
- Mountain Home State Forest



NAD 83 UTM Zone 11



| NAME | LAT_DM | LON_DM |
|-----------------------|-----------|-------------|
| TYPE: Helispot | | |
| H-1 | 36 16.981 | -118 36.015 |
| H-2 | 36 14.550 | -118 32.006 |
| H-3 | 36 15.003 | -118 33.220 |
| Burnt Corral Spike | 36 13.352 | -118 29.823 |
| Lion Meadows Spike | 36 15.963 | -118 29.907 |
| TYPE: Camp | | |
| Jacobsen Meadow Spike | 36 13.658 | -118 36.146 |
| Parole Spike | 36 14.476 | -118 31.891 |
| Pecks Spike | 36 17.040 | -118 36.122 |
| Summit Spike | 36 12.541 | -118 34.530 |