



CABIN FIRE

CA-SQF-002313 August 9, 2015

PUBLIC INFORMATION MAP

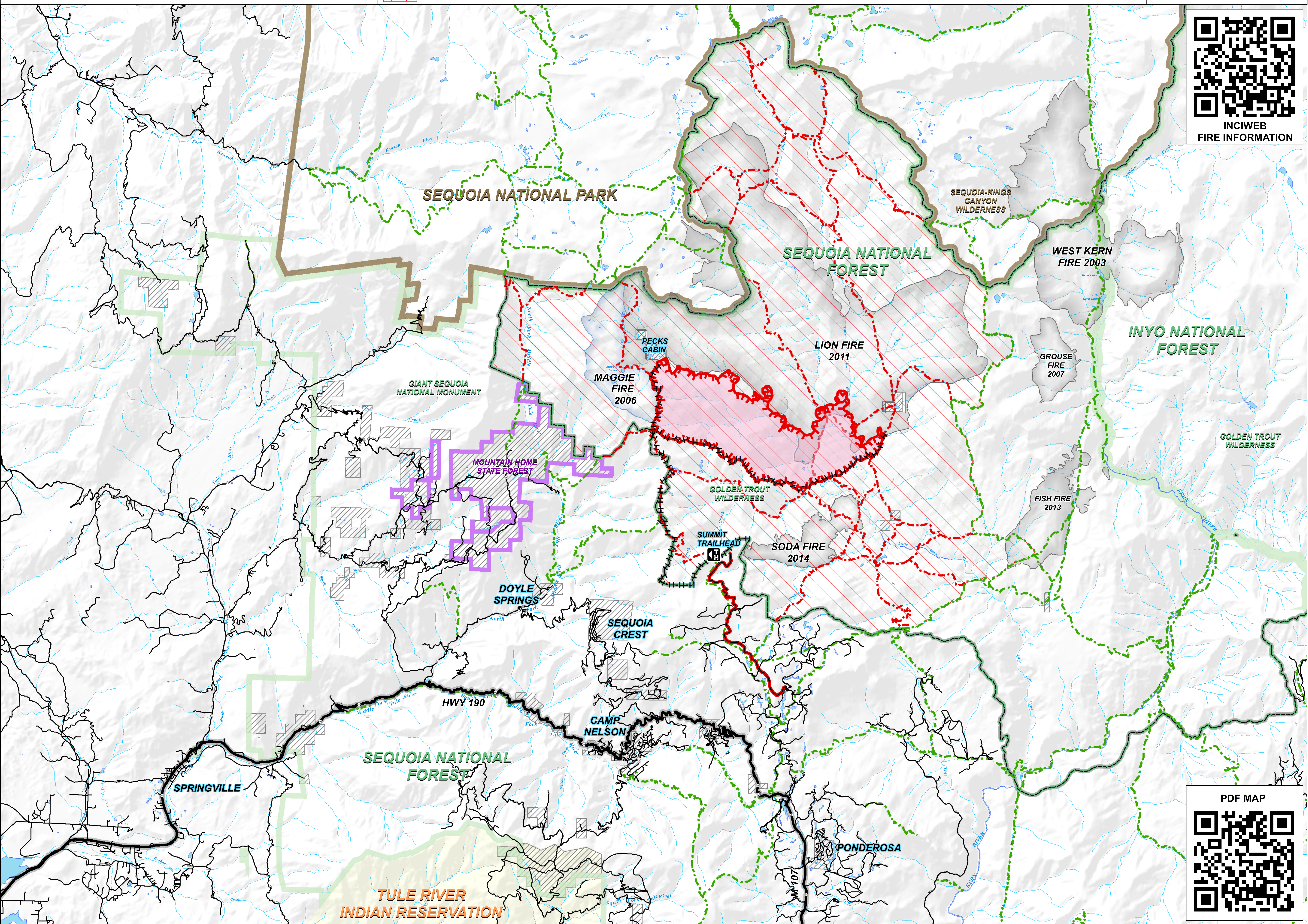
- Cabin Fire
- Uncontrolled Fire Edge
- Closed Trail
- Open Trail
- USFS - National Forest Boundary
- NPS - National Park Boundary
- Indian Reservation
- Mountain Home State Forest
- Completed Hand Line
- Open Road
- Golden Trout Wilderness
- Non-Forest Service
- Forest Closure Area
- Closed Road

5,795 acres
Approximate Perimeter as of 8/8/2015 @ 1400 hrs

NAD 83 UTM Zone 11

0 0.5 1 2 3 Miles

INCIVEB
FIRE INFORMATION



PDF MAP