

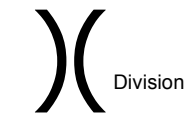


**CABIN FIRE**  
 CA-SQF-002313  
 August 8, 2015

5795 acres

Approximate Perimeter as of 8/8/2015 @ 1400 hrs

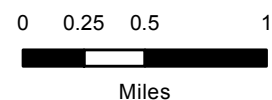
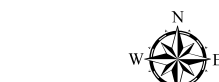
- TFR
- Research Natural
- Trail
- Road
- Wilderness
- Forest Boundary
- National Park Boundary
- Mountain Home State Forest



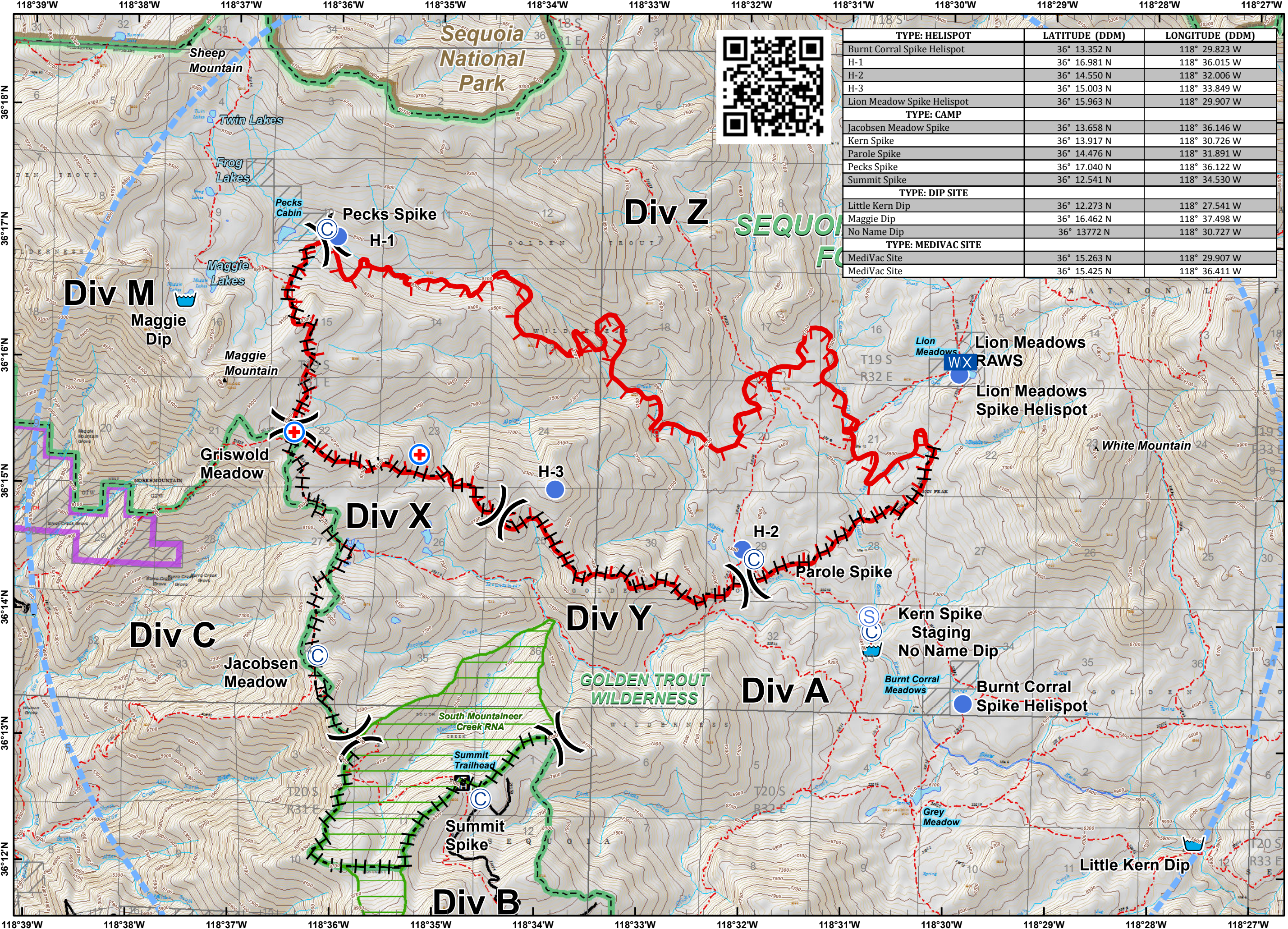
H-H Hand Line

Uncontrolled Fire Edge

**FirePoint**



NAD 83 UTM Zone 11



TYPE: HELISPOT	LATITUDE (DDM)	LONGITUDE (DDM)
Burnt Corral Spike Helispot	36° 13.352 N	118° 29.823 W
H-1	36° 16.981 N	118° 36.015 W
H-2	36° 14.550 N	118° 32.006 W
H-3	36° 15.003 N	118° 33.849 W
Lion Meadow Spike Helispot	36° 15.963 N	118° 29.907 W
TYPE: CAMP		
Jacobsen Meadow Spike	36° 13.658 N	118° 36.146 W
Kern Spike	36° 13.917 N	118° 30.726 W
Parole Spike	36° 14.476 N	118° 31.891 W
Pecks Spike	36° 17.040 N	118° 36.122 W
Summit Spike	36° 12.541 N	118° 34.530 W
TYPE: DIP SITE		
Little Kern Dip	36° 12.273 N	118° 27.541 W
Maggie Dip	36° 16.462 N	118° 37.498 W
No Name Dip	36° 13772 N	118° 30.727 W
TYPE: MEDIVAC SITE		
MediVac Site	36° 15.263 N	118° 29.907 W
MediVac Site	36° 15.425 N	118° 36.411 W

118°39'W 118°38'W 118°37'W 118°36'W 118°35'W 118°34'W 118°33'W 118°32'W 118°31'W 118°30'W 118°29'W 118°28'W 118°27'W