

116°52'30"W

116°51'0"W

116°49'30"W

33°25'30"N

33°25'30"N

33°24'0"N

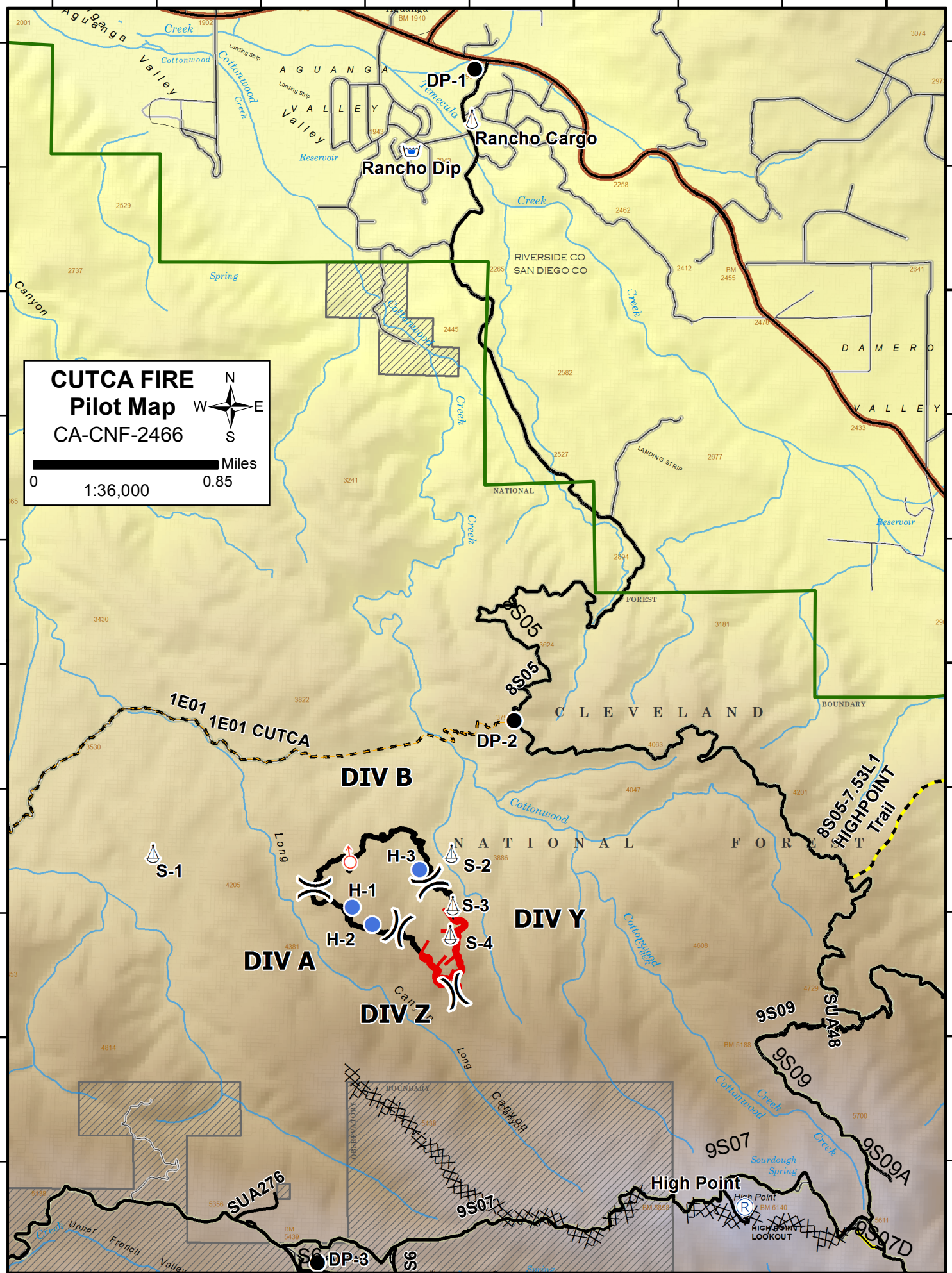
33°24'0"N

33°22'30"N

33°22'30"N

**CUTCA FIRE**  
**Pilot Map**  
 CA-CNF-2466

0 1:36,000 0.85 Miles



<b>PntLabel</b>	<b>PntType</b>	<b>DMX</b>	<b>DMY</b>
	Spot Fire	116° 52.081'W	33° 23.205'N
High Point	Repeater	116° 50.19'W	33° 21.814'N
Rancho Dip	Retardant/Mud Pit	116° 51.779'W	33° 26.064'N
Cutca ICP	Incident Command Post	117° 0.077'W	33° 28.193'N
DP-1	Drop Point	116° 51.475'W	33° 26.392'N
DP-2	Drop Point	116° 51.292'W	33° 23.771'N
DP-3	Drop Point	116° 52.238'W	33° 21.591'N
H-1	Helispot	116° 52.07'W	33° 23.02'N
H-2	Helispot	116° 51.973'W	33° 22.951'N
H-3	Helispot	116° 51.746'W	33° 23.171'N
Rancho Cargo	Sling Site	116° 51.491'W	33° 26.191'N
S-1	Sling Site	116° 53.024'W	33° 23.237'N
S-2	Sling Site	116° 51.594'W	33° 23.237'N
S-3	Sling Site	116° 51.587'W	33° 23.026'N
S-4	Sling Site	116° 51.599'W	33° 22.911'N